



**HAL**  
open science

## First detection of European bat lyssavirus type 2 (EBLV-2) in Norway

Torfinn Moldal, Turid Vikøren, Florence Cliquet, Denise A Marston, Jeroen van Der Kooij, Knut Madslie, Irene Ørpetveit

► **To cite this version:**

Torfinn Moldal, Turid Vikøren, Florence Cliquet, Denise A Marston, Jeroen van Der Kooij, et al.. First detection of European bat lyssavirus type 2 (EBLV-2) in Norway. BMC Veterinary Research, 2017, 13 (1), 10.1186/s12917-017-1135-z . anses-03419769

**HAL Id: anses-03419769**

**<https://anses.hal.science/anses-03419769>**

Submitted on 8 Nov 2021

**HAL** is a multi-disciplinary open access archive for the deposit and dissemination of scientific research documents, whether they are published or not. The documents may come from teaching and research institutions in France or abroad, or from public or private research centers.

L'archive ouverte pluridisciplinaire **HAL**, est destinée au dépôt et à la diffusion de documents scientifiques de niveau recherche, publiés ou non, émanant des établissements d'enseignement et de recherche français ou étrangers, des laboratoires publics ou privés.

CASE REPORT

Open Access



# First detection of *European bat lyssavirus* type 2 (EBLV-2) in Norway

Torfinn Moldal<sup>1\*</sup> , Turid Vikøren<sup>1</sup>, Florence Cliquet<sup>2</sup>, Denise A. Marston<sup>3</sup>, Jeroen van der Kooij<sup>4</sup>, Knut Madslien<sup>1</sup> and Irene Ørpetveit<sup>1</sup>

## Abstract

**Background:** In Europe, bat rabies is primarily attributed to *European bat lyssavirus* type 1 (EBLV-1) and *European bat lyssavirus* type 2 (EBLV-2) which are both strongly host-specific. Approximately thirty cases of infection with EBLV-2 in Daubenton's bats (*Myotis daubentonii*) and pond bats (*M. dasycneme*) have been reported. Two human cases of rabies caused by EBLV-2 have also been confirmed during the last thirty years, while natural spill-over to other non-flying mammals has never been reported. Rabies has never been diagnosed in mainland Norway previously.

**Case presentation:** In late September 2015, a subadult male Daubenton's bat was found in a poor condition 800 m above sea level in the southern part of Norway. The bat was brought to the national Bat Care Centre where it eventually displayed signs of neurological disease and died after two days. EBLV-2 was detected in brain tissues by polymerase chain reaction (PCR) followed by sequencing of a part of the nucleoprotein gene, and lyssavirus was isolated in neuroblastoma cells.

**Conclusions:** The detection of EBLV-2 in a bat in Norway broadens the knowledge on the occurrence of this zoonotic agent. Since Norway is considered free of rabies, adequate information to the general public regarding the possibility of human cases of bat-associated rabies should be given. No extensive surveillance of lyssavirus infections in bats has been conducted in the country, and a passive surveillance network to assess rabies prevalence and bat epidemiology is highly desired.

**Keywords:** Rabies, Daubenton's bat (*Myotis daubentonii*), European bat lyssavirus type 2 (EBLV-2), fluorescent antibody test (FAT), polymerase chain reaction (PCR), rabies tissue culture infection test (RTCIT)

## Background

Rabies is a fatal zoonotic neurological disease caused by RNA viruses belonging to the genus *Lyssavirus* in the family *Rhabdoviridae*. *Rabies virus* (RABV) is the prototype of the genus and causes approximately 59,000 deaths in humans yearly [1]. Red fox (*Vulpes vulpes*) is the main reservoir for RABV in Europe, where the disease has been eliminated in many member states of the European Union due to oral vaccination programs [2]. Rabies in non-flying mammals has never been diagnosed in mainland Norway [3]. However, in the Svalbard archipelago, which is under Norwegian jurisdiction, several occasional detections and two rabies outbreaks during the last 35 years have been reported and are related to

arctic strains of RABV in Arctic fox (*Vulpes lagopus*), Svalbard reindeer (*Rangifer tarandus platyrhincus*) and one ringed seal (*Pusa hispida*) [4–6].

The genus *Lyssavirus* consists of 14 recognized species [7], and all but two have been isolated from bats [8]. The different species display distinct features regarding geographical distribution and host specificity. In Europe, bat rabies is primarily attributed to *European bat lyssavirus* type 1 (EBLV-1) and *European bat lyssavirus* type 2 (EBLV-2) [9]. Most reported bat rabies cases are caused by EBLV-1 which is almost exclusively found in serotine bats (*Eptesicus serotinus*) and Isabelline serotine bats (*E. isabellinus*), while EBLV-2 is detected mainly in Daubenton's bats (*Myotis daubentonii*) and to a lesser extent in pond bats (*M. dasycneme*) [9]. Evolutionary studies suggest that EBLV-2 diverged from other lyssaviruses more than 8000 years ago and that the current

\* Correspondence: torfinn.moldal@vetinst.no

<sup>1</sup>Norwegian Veterinary Institute, Postbox 750, Sentrum, 0106 Oslo, Norway  
Full list of author information is available at the end of the article

diversity of EBLV-2 has built up during the last 2000 years [10].

Hitherto, EBLV-2 has been detected in bats in the United Kingdom, the Netherlands, Germany, Switzerland, Finland and Denmark [11–16], while antibodies against EBLV-2 have been found in bats in Sweden [17]. Two cases of human rabies associated with EBLV-2 have been reported in Finland [18] and in Scotland [19]. To date, no cases of natural spill-over to other non-flying mammals have been reported, but EBLV-2 has successfully been transferred to sheep and foxes in experimental studies, even though the susceptibility seems to be low in these species [20, 21].

Among the 12 species of bats regularly reported in Norway, the northern bat (*E. nilssonii*), the soprano pipistrelle (*Pipistrellus pygmaeus*) and the Daubenton's bat are the most common and widespread species [22–24]. The serotine bat has been recorded once and is not considered as a resident species [25]. The range of the Daubenton's bat reaches to 63° N in Norway [24]. The results of ringing experiments in other countries suggest that this species does not migrate over long distances [26], which is likely also the case in Norway. The Daubenton's bat is specialized in hunting insects and spiders, which it mainly catches with its feet from the water surface [27], but it is also found searching for food in forests [24]. Daubenton's bats seldom occur above the timberline and roost mainly in tree cavities, but also use crevices in bridges and cliffs. Roosts in buildings are very rare [24, 28] and so are contacts with the general public [29].

There is no official surveillance program for lyssavirus in bats in Norway. According to the annals of the Norwegian Veterinary Institute (NVI), a total of 27 bats (swabs from 18 bats sampled alive and brain tissues from nine carcasses) were examined for lyssavirus in the period 1998–2015. Here, we report the first detection of EBLV-2 in Norway.

## Case presentation

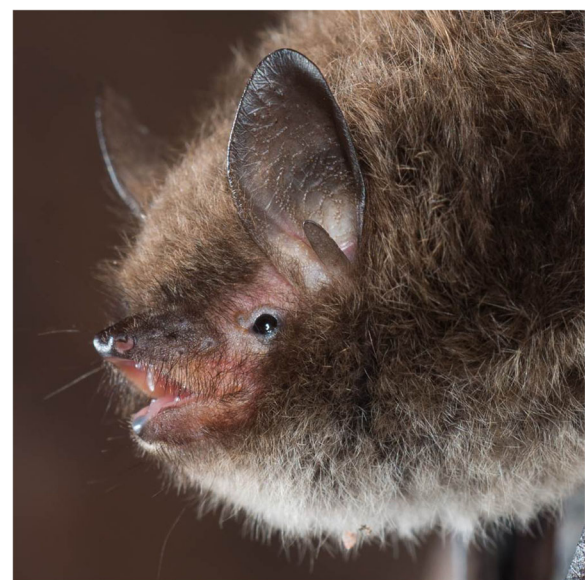
### Clinical signs and treatment

On September 29th 2015, a bat was discovered close to a cabin in Valdres in the county of Oppland. The locality is situated just below the timberline at around 800 m above sea level at 60° 59' N in the southern part of Norway. The landscape is undulating with open spaces and mixed forest dominated by Norway spruce (*Picea abies*) and mountain birch (*Betula pubescens ssp. czerepanovii*), lakes and small meadows. The cabin owner discovered the animal clinging to a stone when she removed a tarpaulin. Three days later, the bat was still there, and the cabin owner called the National Bat Helpline, which advised her to bring the bat to the national Bat Care Centre of the Norwegian Zoological Society (NZI). The centre is approved and partly funded by the

Norwegian Environmental Agency (NEA) and the Norwegian Food Safety Authority (NFSA) [29].

The bat arrived at the Bat Care Centre the next day, on October 3rd 2016, and was identified as a male Daubenton's bat based on external characteristics, i.e. short tragus, large feet and the attachment of the wing membrane at the middle of the foot, and as a subadult individual based on the brownish face and the presence of a chin-spot (Fig. 1) [30]. The bat weighed 6.6 g on arrival and had a forearm length of 38.3 mm, hence the body condition index (mass g/forearm mm) was 0.17, which indicated low energy reserves [31]. It was weak, and the tongue was dark red and swollen. It had dark plaque on its teeth, and there was a heavy load of mites of the genus *Spinturnix* on the wing membrane surface. As a safety precaution, the diseased bat was routinely placed in a clean plastic container (35x45x40 cm) separated from other bats in the facility.

The bat drank and ate mealworm (*Tenebrio molitor*) on arrival. It walked around inside the container and on one occasion lunged against the bat carer. After a few hours the bat grew stronger, groomed itself and produced some excrement. The following day, on October 4th 2016, it gradually refused to eat, displayed difficulty when swallowing water and got weaker. The bat was force-fed several times, received fluid subcutaneously and eventually had increased locomotor activity. In the late evening it displayed mild ataxia. The following morning, the bat's condition deteriorated. The bat walked around, but its locomotion was less agile and it was not able to groom itself. The bat became even weaker towards the evening in spite of treatment with



**Fig. 1** The bat was identified as a subadult male Daubenton's bat based on external characteristics. Photographer: Jeroen van der Kooij

antibiotics and fluid, and when force-fed with water or fluids, it showed signs of vomiting and spread both wings and legs. It also tried to bite, but without force. The bat died in the evening of October 5th 2016 and was subsequently frozen.

### **Necropsy, sampling and histology**

On October 6th 2015, the bat was submitted to the NVI in Oslo for laboratory examinations on suspicion of rabies. The necropsy revealed that the bat was in a poor condition with no visible body fat. The tongue was dark red and dry. The internal organs were congested with no specific gross findings.

Brain impressions on glass slides were fixed in acetone baths for fluorescent antibody test (FAT), and tissues from different parts of the brain were put on empty tubes and tubes with lysis buffer for rabies tissue culture infection test (RTCIT) and detection of viral RNA by reverse transcription and polymerase chain reaction (RT-PCR), respectively. The remains of the brain and the head including salivary glands, lung, heart, liver, kidney, spleen, gastrointestinal tract and pancreas were fixed in 10% buffered formalin for two weeks, routinely processed and embedded in paraffin before cutting ultrathin sections that were mounted on glass slides and stained with haematoxylin-eosin for histological examination.

Only small pieces of brain tissue were available for histology, and no lesions were detected. In the lungs, multifocal areas of foreign material aspiration with infiltration of inflammatory cells were seen, and a similar small focal inflammation was found in the salivary gland tissue. A few parasitic structures without any associated inflammation were detected in the liver.

### **FAT and RTCIT**

The laboratory tests used for rabies diagnosis are recommended by WHO and OIE. FAT, in which virus antigens in brain tissues are detected, is the gold standard for diagnosing rabies [32]. Fixed brain impressions were stained with FITC Anti-Rabies Monoclonal Globulin (Fujirebio Diagnostics Inc.) according to the manufacturer's instructions. A brain impression from a rabid cow served as a positive control, while a brain impression from a healthy fox served as a negative control. All slides were investigated in a fluorescence microscope (Leitz) under ultraviolet light. Virus antigen was detected in the positive control, but not in the negative control or any of the brain impressions from the bat.

The detection of infectious particles in brain homogenates was performed by RTCIT on neuroblastoma cells with an incubation period of 48 h at 37 °C as previously described [33]. The staining was performed using a rabies anti-nucleocapsid FITC-conjugated antibody

(BioRad). The brain tissues from the bat were found positive for the presence of infectious virus by RTCIT.

### **Nucleic acid extraction, RT-PCR and partial sequencing of the nucleoprotein gene**

Total nucleic acids were extracted using the NucliSens® easyMAG™ (bioMerieux Inc.) according to the manufacturer's instructions for the off-board protocol. Nucleic acids were eluted in 55 µl buffer. Primers targeting the nucleoprotein gene were applied in a two-step RT-PCR. RT was performed with Invitrogen SuperScript® III Reverse Transcriptase (Thermo Fisher Scientific) with the primer LYSSA-NMA (5'-ATGTAACACCCYCTACAATG-3') that is modified from primer JW12 in [34].

PCR was performed with Qiagen HotStarTaq® DNA Polymerase (Qiagen) according to the manufacturer's instructions. The forward primer, LYSSA-NMB (5'-ATGTAACACCCYCTACAATGGA-3') was used in two separate PCR reactions with either LYSSA-NGA (5'-TGACTCAGTTTRGRCACAT-3') or LYSSA-NGC (5'-GGGTACTTGTACTCATAYTGRTC-3') as reverse primers, yielding amplicons of 612 bp and 108 bp respectively. The primers are modified from the primers JW12, JW6 and SB1 in [34] respectively. Amplicons were separated on 1% agarose gel at 90 V for 90 min and visualized by DNA Gel Loading Dye (Thermo Fisher Scientific).

The PCR products yielding bands of the expected size in the agarose gel electrophoresis were further analysed by DNA sequencing. Following enzymatic PCR clean up with illustra™ ExoStar™ (GE Healthcare Life Sciences), DNA sequencing was performed using the BigDye® Terminator v3.1 Cycle Sequencing Kit (Thermo Fisher Scientific) according to the manufacturer's instructions. The products were analysed in an ABI PRISM® 3100 Genetic Analyzer (Thermo Fisher Scientific) according to the manufacturer's instructions and with Sequencher® version 5.3 sequence analysis software (Gene Codes Corporation).

A sequence with 567 nucleotides (GenBank accession number KX644889) was obtained with the primers LYSSA-NMB and LYSSA-NGA. BLAST search against the GenBank database showed 94–96% identity with EBLV-2 (Table 1). The sequence was aligned with sequences for EBLV-2 published in GenBank to evaluate the genetic diversity and the relationship to other bat-associated lyssaviruses, and phylogenetic trees were constructed with MEGA 6 based on an alignment of 391 nucleotides applying the Maximum Likelihood and Neighbor-Joining algorithms with 1000 bootstrap replicates and different substitution models (Fig. 2) [35]. The trees showed similar results, and although the node is not strongly supported, the results indicate that the sequence from the Norwegian virus did not cluster closely with any other published sequences of EBLV-2.



**Table 1** The site and year of collection, host species and GenBank accession number for sequences for a part of the nucleoprotein gene of *European bat lyssavirus 2* used to generate a phylogenetic tree

Place	Country	Year	Host species	GenBank accession number	Reference(s)
Helsinki	Finland	1985	<i>Homo sapiens</i>	AY062091	[18, 61]
Wommels	Netherlands	1986	<i>Myotis dasycneme</i>	U22847	[12, 62]
Tjerkwerd	Netherlands	1987	<i>Myotis dasycneme</i>	U89480	[12, 62]
Andijk	Netherlands	1989	<i>Myotis dasycneme</i>	U89481	[12, 62]
Plaffeien	Switzerland	1992	<i>Myotis daubentonii</i>	AY212117	[14, 46]
Roden	Netherlands	1993	<i>Myotis dasycneme</i>	U89482	[12, 62]
Versoix	Switzerland	1993	<i>Myotis daubentonii</i>	U89479	[62]
Sussex	United Kingdom	1996	<i>Myotis daubentonii</i>	U89478	[11, 62]
Lancashire	United Kingdom	2002	<i>Myotis daubentonii</i>	AY212120	[46]
Angus	United Kingdom	2002	<i>Homo sapiens</i>	AY247650	[19]
Geneva	Switzerland	2002	<i>Myotis daubentonii</i>	AY863408	[63]
Surrey	United Kingdom	2004	<i>Myotis daubentonii</i>	JQ796807	[9, 47]
Lancashire	United Kingdom	2004	<i>Myotis daubentonii</i>	JQ796808	[9, 64]
Oxfordshire	United Kingdom	2006	<i>Myotis daubentonii</i>	JQ796809	[9, 48]
Magdeburg	Germany	2006	<i>Myotis daubentonii</i>	JQ796805	[9, 50]
Schwansee	Germany	2006	<i>Myotis daubentonii</i>	KF826115	[65]
Bad Buchau	Germany	2007	<i>Myotis daubentonii</i>	GU227648	[13]
Shropshire	United Kingdom	2007	<i>Myotis daubentonii</i>	JQ796810	[9, 49]
Surrey	United Kingdom	2008	<i>Myotis daubentonii</i>	JQ796811	[9]
Shropshire	United Kingdom	2008	<i>Myotis daubentonii</i>	JQ796812	[9, 66]
West Lothian	United Kingdom	2009	<i>Myotis daubentonii</i>	JQ796806	[9, 67]
Turku	Finland	2009	<i>Myotis daubentonii</i>	GU002399	[15]
Gießen	Germany	2013	<i>Myotis daubentonii</i>	KF826149	[65]
Valdres	Norway	2015	<i>Myotis daubentonii</i>	KX644889	This study

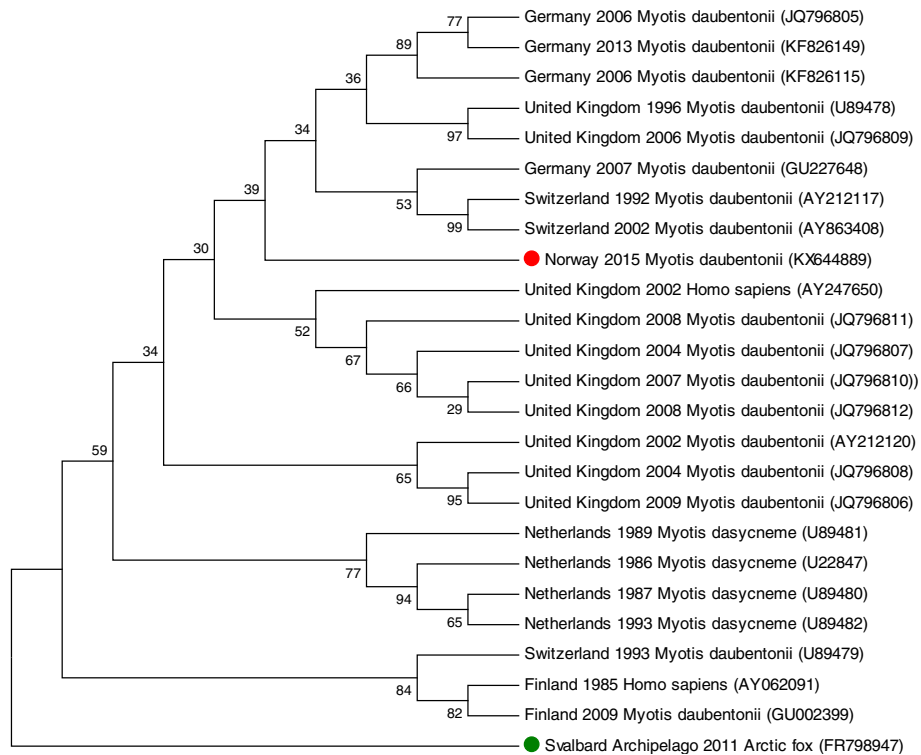
**Whole genome sequencing**

Total RNA was depleted of host genomic DNA (gDNA) and ribosomal RNA (rRNA) following methods described previously [36, 37]. Briefly, gDNA was depleted using the on-column DNase digestion protocol in RNeasy plus mini kit (Qiagen) following manufacturer’s instructions, eluting in 30 µl molecular grade water. Subsequently, rRNA was depleted, using Terminator 5’-phosphate-dependent exonuclease (Epicentre Biotechnologies). Briefly, 30 µl of gDNA depleted RNA was mixed with 3 µl of Buffer A, 0.5 µl of RNAsin Ribonuclease inhibitor (20–40 U/µl) and incubated at 30 °C for 60 min. The depleted RNA was purified to remove the enzyme using the RNeasy plus mini kit as above, without the DNase digestion, eluting in 30 µl of molecular grade water. Double stranded cDNA (ds-cDNA) was synthesised using random hexamers, and a cDNA synthesis kit (Roche) following manufacturer’s instructions. The resulting ds-cDNA was purified using AMPure XP magnetic beads (Beckman Coulter), quantified using Quantifluor (Promega) and approximately 1 ng of the ds-cDNA library was used in a ‘tagmentation’ reaction

mix using a Nextera XT DNA sample preparation kit (Illumina) following manufacturer’s instructions – without the bead normalization step. The DNA library was quantified using Quantifluor (Promega) and sequenced as 2 × 150 bp paired-end reads on an Illumina MiSeq platform.

Short reads were mapped to the most genetically related full length EBLV-2 genome available (Germany 2012 – GenBank accession number KY688149). Reads were mapped using the Burrow-Wheeler Aligner (BWA version 0.7.5a–r405) [38] and visualized in Tablet [39]. A modified SAMtools/vcftutils [40] script was used to generate an intermediate consensus sequence in which any indels and SNPs relative to the original reference sequence were appropriately called. The intermediate consensus sequence was used as the reference for four subsequent iterations of mapping and consensus calling, described previously [41].

A total of 38,288 EBLV-2 specific reads were mapped from 5,839,126 total reads (0.66%). The average depth of coverage was 373.6 with a maximum depth of coverage of 1900. Sequencing resulted in complete genomic



**Fig. 2** Phylogenetic relationship between the Norwegian EBLV-2 sequence (●) and other EBLV-2 sequences based on 391 nucleotides from the nucleoprotein gene. The tree was constructed with the Maximum Likelihood algorithm with 1000 bootstrap replicates and the Tamura-Nei substitution model. The number at each branch of the phylogenetic tree represents the likelihood in percentage that the sequences cluster together. RABV from an Arctic fox is used as outgroup (●). The country and year of collection, host species and GenBank accession number for sequences are given

coverage, apart from the first 9 nucleotides. However, the lyssavirus genomic ends are highly conserved between species and palindromic [42, 43]. Therefore the first 9 nucleotides of the 3' UTR sequence was deduced using the 5' end sequence and matched 100% with other EBLV-2 genomes available. The total genomic length is 11,928 nucleotides (Table 2), conforming to other EBLV-2 genome sequences (11,924–30), where all regions are identical in length except for the non-coding regions of M-G and G-L. The complete genome sequence was submitted to GenBank (accession number KY688154).

**Discussion and conclusions**

Here, we report the first detection of EBLV-2 in Norway. The detection of EBLV-2 in a Daubenton's bat is in accordance with previous studies that have revealed that EBLV-2 is mainly found in this species [9]. As the bat was a subadult and ringing experiments suggest that this species does not migrate over long distances [26], it can be assumed that the bat was native to the area where it was found and that EBLV-2 is present in Norway. The latter is supported by the phylogenetic analyses, which indicate that the Norwegian

isolate differs from other published isolates, further suggesting that the Norwegian isolate may have evolved separately from a common European ancestor [10]. Very few bats have been examined for rabies in Norway, and we have no knowledge of the prevalence and epidemiology of EBLV. In neighbouring countries,

**Table 2** Length of coding (bold) and non-coding regions of EBLV-2 in nucleotides (nts)

Region	Length (nts)
3' UTR	70
<b>N protein</b>	1356
N-P	101
<b>P protein</b>	894
P-M	88
<b>M protein</b>	609
M-G	210
<b>G protein</b>	1575
G-L	510
<b>L protein</b>	6384
5' UTR	131
<b>Total</b>	<b>11,928</b>

EBLV-2 was detected in diseased Daubenton's bats in Finland in 2009 and 2016 [15, 44], while active surveillance has revealed viral RNA from mouth swabs from Daubenton's bat in Denmark and seropositive Daubenton's bats in both Sweden and Finland [16, 17, 45].

The FAT performed on brain impressions at the NVI was negative, and unfortunately, due to insufficient material, it could not be repeated at the Nancy OIE/WHO/EU Laboratory for Rabies and Wildlife (EURL). However, the EURL confirmed the presence of lyssavirus in the RTCIT. The negative result for FAT does not concur with findings in other Daubenton's bats naturally infected with EBLV-2 [11, 13–15, 44, 46–51]. The annual proficiency tests for rabies diagnosis techniques organized by the EURL have demonstrated the difficulty for laboratories to reliably detect EBLV strains when using the FAT [52], with results depending on the rabies virus antibody conjugate and even the batch used [53]. However, the same batch used in the FAT for the present case has successfully been applied at the NVI for detection of this virus species in two proficiency tests (unpublished results). A polyclonal antibody was used to confirm the presence of lyssavirus in the RTCIT, and a difference between the antibodies regarding the ability to detect the current virus cannot be excluded.

The aspiration pneumonia might have been caused by a dysfunctional swallow reflex or as a result of the force-feeding. The bat had a low state of nutrition, displayed several signs of weakness and, in the end, an inability to fly. This could be caused by the EBLV-2 infection or due to general weakness as a consequence of either shortage of feed at the high altitude or inexperience in hunting since being a subadult. Also, a poor body condition could have made the bat more susceptible for EBLV-2 infection. Weight loss, the inability to fly and death within 14 days followed by detection of viral antigen in brain tissue is reported in Daubenton's bats after intracerebral inoculation with EBLV-2 [54]. In that study the bats were fed ad libitum, so the weight loss could not be related to a decrease in hunting success. During a natural EBLV-2 infection, the course of the disease is probably longer than that found in the referred experiment, and thus the ability to hunt and eat could deteriorate over some time span, resulting in gradual loss of body condition. Poor body condition in bats can also be influenced by heavy parasite loads [55]. Other possible signs of the disease, like the inability to fly, were registered only up to 48 h before death in the experiment [54]. Most of the bats which were inoculated either intramuscularly or subdermally survived the study period of 123 days [54]. These findings highlight that there is a high intra-species barrier in transmission of EBLV-2 and that the incubation period under natural conditions is probably several weeks to months.

Two human cases of rabies caused by EBLV-2 have been reported, in Finland in 1985 and in Scotland in 2002 [18, 19]. Both persons were in close contact with bats over time and had been bitten several times without any history of immunization prior to exposure or post-exposure prophylaxis. Spill-over to other non-flying mammals under natural conditions has not been reported, and the detection of EBLV-2 does not pose an immediate risk to humans as Daubenton's bats are rarely in contact with the public [29]. However, the possibility of human cases of bat-associated rabies acquired in Norway, which is considered free of rabies, cannot be neglected; hence adequate information should be given to the general public as well as to people and professionals who come into contact with bats.

All bat species in Norway are strictly protected under both national laws and international commitments to preserve bats [56, 57]. Culling bats for lyssavirus testing is therefore not a feasible strategy. Passive surveillance by testing bats found sick or dead is the most appropriate way of assessing the incidence of rabies as compared with active surveillance by testing swabs and/or sera from live bats from natural populations [58, 59]. Passive surveillance of bat rabies is therefore strongly recommended by international organizations [58, 60].

Monitoring of EBLV in bats has so far not been prioritized by the Norwegian authorities, probably due to few human cases of bat-associated rabies being reported in Europe. According to the annals of the NVI, only seven carcasses of bats including the EBLV-2 positive case were examined during the last three years. In 2014 and 2015, the NVI in collaboration with the NZS collected and tested nasopharyngeal and cloacal swabs from totally 16 free-ranging Norwegian bats for lyssaviruses with a negative result (unpublished data). The experience gained in this pilot study and from surveillance in other countries is important for future monitoring of bat rabies in Norway.

The authors believe that testing bats found sick or dead should get priority through a national rabies surveillance network in line with the recent recommendations of EUROBATS and EFSA [58, 60]. Additionally, an active surveillance program, over a limited number of years and in defined areas to obtain baseline data on the prevalence of bat rabies in Norway, is also recommended. Finally, we emphasize the importance of good cooperation between bat biologists and laboratory workers to ensure access to representative samples of good quality.

#### Abbreviations

EBLV-1: *European bat lyssavirus* type 1; EBLV-2: *European bat lyssavirus* type 2; EURL: Nancy OIE/WHO/EU Laboratory for Rabies and Wildlife; FAT: Fluorescent antibody test; gDNA: Genomic DNA; NEA: Norwegian Environmental Agency; NFSA: Norwegian Food Safety Authority;

NVI: Norwegian Veterinary Institute; NZI: Norwegian Zoological Society; PCR: Polymerase chain reaction; RABV: *Rabies virus*; rRNA: Ribosomal RNA; RT: Reverse transcription; RTCIT: Rabies tissue culture infection test

#### Acknowledgements

The authors want to thank the cabin owner who found the bat and brought it to the Bat Care Centre and Anke Kirkeby for practical care and additional information on the behaviour of the bat. We are grateful to Marianne Heum, Kristin Stangeland Soetaert, Lene Hermansen, Faisal Suhel, Rosa Ferreira Fristad, Britt Gjerset and Hilde Sindre at the NVI, Alexandre Servat and Evelyne Picard-Meyer at the EURL and Richard J. Ellis at Animal and Plant Health Agency.

#### Funding

The Bat Help Line and the Bat Care Centre receive financial funding from the NEA. The necropsy, histological examination, FAT, RT-PCR and the partial sequencing of the nucleoprotein gene were funded by the NVI, while the RTCIT and the whole genome sequencing were funded by the EURL and the European Union H2020-grant 'European Virus Archive Global (EVAg)' (H2020-grant agreement number 653316) respectively.

#### Availability of data and materials

The sequences for a part of the nucleoprotein gene and the complete genome are submitted to GenBank (<https://www.ncbi.nlm.nih.gov/genbank>) and assigned accession numbers KX644889 and KY688154 respectively, while the formalin-fixed, paraffin embedded tissues and propagated virus are stored at the NVI and the EURL respectively.

#### Authors' contributions

TM was responsible for the RT-PCR and the partial sequencing of the nucleoprotein gene and coordinated the drafting of the manuscript, TV performed the necropsy, sampling and histological examination, FC was responsible for the RTCIT, DM was responsible for the whole genome sequencing, JvdK had the primary contact with the cabin owner and was responsible for the handling of the bat at the Bat Care Centre, KM coordinated the submission of the bat for necropsy, and IØ supervised the RT-PCR and the partial sequencing of the nucleoprotein gene. All authors took part in writing the manuscript and have approved the final version.

#### Ethics approval

The bat was handled according to standard procedures at the NZS's Bat Care Centre that is approved by the NEA and the NFSA.

#### Consent for publication

Not applicable.

#### Competing interests

The authors declare that they have no competing interests.

#### Publisher's Note

Springer Nature remains neutral with regard to jurisdictional claims in published maps and institutional affiliations.

#### Author details

<sup>1</sup>Norwegian Veterinary Institute, Postbox 750, Sentrum, 0106 Oslo, Norway. <sup>2</sup>Nancy OIE/WHO/EU Laboratory for Rabies and Wildlife, French Agency for Food, Environmental and Occupational Health & Safety, CS 40009, 54220 Malzéville, France. <sup>3</sup>Animal and Plant Health Agency, New Haw, Addlestone, Surrey KT15 3NB, UK. <sup>4</sup>Norwegian Zoological Society's Bat Care Centre, Rudsteinveien 67, 1480 Slattum, Norway.

Received: 11 December 2016 Accepted: 28 June 2017

Published online: 11 July 2017

#### References

- Hampson K, Coudeville L, Lembo T, Sambo M, Kieffer A, Attlan M, et al. Estimating the global burden of endemic canine rabies. *PLoS Negl Trop Dis*. 2015; doi:10.1371/journal.pntd.0003709.
- Müller T, Freuling CM, Wysocki P, Roumiantzeff M, Freney J, Mettenleiter TC, et al. Terrestrial rabies control in the European Union: historical achievements and challenges ahead. *Vet J*. 2015;203:10–7.
- Heier BT, Lange H, Hauge K, Hofshagen M. Norway 2014 – Trends and source of zoonoses and zoonotic agents in humans foodstuffs, animals and feedingstuffs. Oslo: Norwegian Veterinary Institute; 2015.
- Ødegaard ØA, Krogsrud J. Rabies in Svalbard: infection diagnosed in arctic fox, reindeer and seal. *Vet Rec*. 1981;109:141–2.
- Ørpetveit I, Ytrehus B, Vikøren T, Handeland K, Mjøs A, Nissen S, et al. Rabies in an Arctic fox on the Svalbard archipelago, Norway, January 2011. *Euro Surveill*. 2011;16:2–3.
- Mørk T, Bohlin J, Fuglei E, Åsbakk K, Tryland M. Rabies in the arctic fox population, Svalbard, Norway. *J Wildl Dis*. 2011;47:945–57.
- International Committee on Taxonomy of Viruses (ICTV). *Virus Taxonomy*: 2015 Release. <https://talkictvonline.org/taxonomy/>. Accessed 03 Aug 2016.
- Banyard AC, Evans JS, Luo TR, Fooks AR. Lyssaviruses and bats: emergence and zoonotic threat. *Viruses*. 2014;6:2974–90.
- McElhinney LM, Marston DA, Leech S, Freuling CM, van der Poel WHM, Echevarria J, et al. Molecular epidemiology of bat lyssaviruses in Europe. *Zoonoses Public Health*. 2013;60:35–45.
- Jakava-Viljanen M, Nokireki T, Sironen T, Vapalahti O, Sihvonen L, Liisa S, et al. Evolutionary trends of European bat lyssavirus type 2 including genetic characterization of Finnish strains of human and bat origin 24 years apart. *Arch Virol*. 2015;160:1489–98.
- Whitby JE, Heaton PR, Black EM, Wooldridge M, McElhinney LM, Johnstone P. First isolation of a rabies-related virus from a Daubenton's bat in the United Kingdom. *Vet Rec*. 2000;147:385–8.
- Van der Poel WHM, Van der Heide R, Verstraten ERAM, Takumi K, Lina PHC, Kramps JA. European bat lyssaviruses, The Netherlands. *Emerg Infect Dis*. 2005;11:1854–9.
- Freuling C, Grossmann E, Conraths FJ, Schameitat A, Kliemt J, Auer E, et al. First isolation of EBLV-2 in Germany. *Vet Microbiol*. 2008;131:26–34.
- Megali A, Yannic G, Zahno ML, Brügger D, Bertoni G, Christe P, et al. Surveillance for European bat lyssavirus in Swiss bats. *Arch Virol*. 2010;155:1655–62.
- Jakava-Viljanen M, Lilley T, Kyheroinen EM, Huovilainen A. First encounter of European bat lyssavirus type 2 (EBLV-2) in a bat in Finland. *Epidemiol Infect*. 2010;138:1581–5.
- Rasmussen TB, Chriél M, Baagøe HJ, Fjederholt E, Kooi EA, Belsham GJ, et al. Detection of European bat lyssavirus type 2 in Danish Daubenton's bats using a molecular diagnostic strategy. In Proceedings of 8th annual EPIZONE meeting. Copenhagen; 2014.
- Carlsson U, Lahti E, Elvander M. Surveillance of infectious diseases in animals and humans in Sweden 2012. Uppsala: National Veterinary Institute; 2013.
- Lumio J, Hillbom M, Roine R, Ketonen L, Haltia M, Valle M, et al. Human rabies of bat origin in Europe. *Lancet*. 1986;1:378.
- Fooks AR, McElhinney LM, Pounder DJ, Finnegan CJ, Mansfield K, Johnson N, et al. Case report: isolation of a European bat lyssavirus type 2a from a fatal human case of rabies encephalitis. *J Med Virol*. 2003;71:281–9.
- Brookes SM, Klopfeisch R, Müller T, Healy DM, Teifke JP, Lange E, et al. Susceptibility of sheep to European bat lyssavirus type-1 and -2 infection: a clinical pathogenesis study. *Vet Microbiol*. 2007;125:210–23.
- Cliquet F, Picard-Meyer E, Barrat J, Brookes SM, Healy DM, Wasniewski M, et al. Experimental infection of foxes with European Bat Lyssaviruses type-1 and 2. *BMC Vet Res*. 2009;5:19.
- Syvertsen P, Isaksen K. Rare and potentially new bat species in Norway. *Fauna*. 2007;60:109–19.
- Sunding M. The most common bat species in Norway. *Fauna*. 2007;60:104–8.
- Isaksen K, Klann M, van der Kooij J, Michaelsen T, Olsen K, Starholm T, et al. Flaggermus i Norge. 2009.
- Michaelsen T. Movements of bats in western Norway. *Fauna*. 2011;64:31–43.
- Hutterer R, Ivanova T, Meyer-Cords C, Rodrigues L. Bat Migrations in Europe: A Review of Banding Data and Literature. 2005.
- Kalko E, Schnitzler U. The echolocation and hunting behaviour of Daubenton's bat, *Myotis daubentonii*. *Behav Ecol Sociobiol*. 1989;24:225–38.
- Michaelsen T. Bat activity along a Norwegian fiord. *Fauna*. 2011;64:80–3.
- Olsen K. Kunnskapsstatus for flaggermus i Norge. 1996.
- van der Kooij J. The Norwegian Zoological Society's bat care centre – five years of practise. *Fauna*. 2007;60:183–9.
- Dietz C, Kiefer A. Die Fledermäuse Europas. Kennen, bestimmen, schützen. Stuttgart: Kosmos Verlag; 2014.
- Kokurewicz T. Sex and age related habitat selection and mass dynamics of daubenton's bats *Myotis daubentonii* (Kuhl, 1817) hibernating in natural conditions. *Acta Chiropterologica*. 2004;6:121–44.



33. The World Organisation for Animal Health (OIE). OIE Terrestrial Manual. Chapter 2.1.13 Rabies. 2013.
34. Servat A, Picard-Meyer E, Robardet E, Muznièce Z, Must K, Cliquet F. Evaluation of a Rapid Immunochromatographic Diagnostic Test for the detection of rabies from brain material of European mammals. *Biologicals*. 2012;40:61–6.
35. Tamura K, Stecher G, Peterson D, Filipiński A, Kumar S. MEGA6. Molecular evolutionary genetics analysis version 6.0. *Mol Biol Evol*. 2013;30:2725–9.
36. Marston DA, McElhinney LM, Ellis RJ, Horton DL, Wise EL, Leech SL, et al. Next generation sequencing of viral RNA genomes. *BMC Genomics*. 2013;14:444.
37. Brunner K, Marston DA, Horton DL, Cleaveland S, Fooks AR, Kazwala R, et al. Elucidating the phylodynamics of endemic rabies virus in eastern Africa using whole-genome sequencing. *Virus Evol*. 2015; doi:10.1093/ve/vev011.
38. Li H, Durbin R. Fast and accurate long-read alignment with Burrows-Wheeler transform. *Bioinformatics*. 2010;26:589–95.
39. Milne I, Stephen G, Bayer M, Cock PJ, Pritchard L, Cardle L, et al. Using Tablet for visual exploration of second-generation sequencing data. *Brief Bioinform*. 2013;14:193–202.
40. Li H, Handsaker B, Wysoker A, Fennell T, Ruan J, Homer N, et al. The sequence alignment/map format and SAMtools. *Bioinformatics*. 2009;25:2078–9.
41. Marston DA, Wise EL, Ellis RJ, McElhinney LM, Banyard AC, Johnson N, et al. Complete genomic sequence of rabies virus from an Ethiopian wolf. *Genome Announc*. 2015; doi:10.1128/genomeA.00157-15.
42. Marston DA, McElhinney LM, Johnson N, Müller T, Conzelmann KK, Tordo N, et al. Comparative analysis of the full genome sequence of European bat lyssavirus type 1 and type 2 with other lyssaviruses and evidence for a conserved transcription termination and polyadenylation motif in the G-L 3' non-translated region. *J Gen Virol*. 2007;88:1302–14.
43. Kuzmin IV, Wu X, Tordo N, Rupprecht CE. Complete genomes of Aravan, Khujand, Irkut and West Caucasian bat viruses, with special attention to the polymerase gene and non-coding regions. *Virus Res*. 2008;136:81–90.
44. Tiina N. Rabies (EBLV-2), bat - Finland: Daubenton's bat. International Society for Infectious Diseases. Archive Number: 20161018.4568558. 2016.
45. Nokireki T, Huovilainen A, Lilley T, Kyheroinen EM, Ek-Kommonen C, Sihvonen L, et al. Bat rabies surveillance in Finland. *BMC Vet Res*. 2013;9:174.
46. Johnson N, Selden D, Parsons G, Healy D, Brookes SM, McElhinney LM, et al. Isolation of a European bat lyssavirus type 2 from a Daubenton's bat in the United Kingdom. *Vet Rec*. 2003;152:383–7.
47. Fooks AR, McElhinney LM, Marston DA, Selden D, Jolliffe TA, Wakeley PR, et al. Identification of a European bat lyssavirus type 2 in a Daubenton's bat found in Staines, Surrey, UK. *Vet Rec*. 2004;155:434–5.
48. Fooks AR, Marston D, Parsons G, Earl D, Dicker A, Brookes SM. Isolation of EBLV-2 in a Daubenton's bat (*Myotis daubentonii*) found in Oxfordshire. *Vet Rec*. 2006;159:534–5.
49. Harris SL, Mansfield K, Marston DA, Johnson N, Pajamo K, O'Brien N, et al. Isolation of European bat lyssavirus type 2 from a Daubenton's bat (*Myotis daubentonii*) in Shropshire. *Vet Rec*. 2007;161:384–6.
50. Freuling CM, Kliemt J, Schares S, Heidecke D, Driechciarz R, Schatz J, et al. Detection of European bat lyssavirus 2 (EBLV-2) in a Daubenton's bat (*Myotis daubentonii*) from Magdeburg, Germany. *Berl Münch Tierärztl Wschr*. 2012;125:255–8.
51. Johnson N, Goddard TM, Goharriz H, Wise E, Jennings D, Selden D, et al. Two EBLV-2 infected Daubenton's bats detected in the north of England. *Vet Rec*. 2016;179:311–2.
52. Robardet E, Picard-Meyer E, Andrieu S, Servat A, Cliquet F. International interlaboratory trials on rabies diagnosis: an overview of results and variation in reference diagnosis techniques (fluorescent antibody test, rabies tissue culture infection test, mouse inoculation test) and molecular biology techniques. *J Virol Methods*. 2011;177:15–25.
53. Robardet E, Andrieu S, Rasmussen TB, Dobrostan M, Horton DL, Hostnik P, et al. Comparative assay of fluorescent antibody test results among twelve European National Reference Laboratories using various anti-rabies conjugates. *J Virol Methods*. 2013;191:88–94.
54. Johnson N, Vos A, Neubert L, Freuling C, Mansfield KL, Kaipf I, Denzinger A, Hicks D, Nunez A, Franka R, et al. Experimental study of European bat lyssavirus type-2 infection in Daubenton's bats (*Myotis daubentonii*). *J Gen Virol*. 2008;89:2662–72.
55. Lucan RK. Relationships between the parasitic mite *Spinturnix andegavivus* (*Acari: Spinturnicidae*) and its bat host, *Myotis daubentonii* (*Chiroptera: Vespertilionidae*): seasonal, sex- and age-related variation in infestation and possible impact of the parasite on the host condition and roosting behaviour. *Folia Parasitol (Praha)*. 2006;53:147–52.
56. Lov om jakt og fangst av vilt (viltloven). <https://lovdata.no/dokument/NL/lov/1981-05-29-38>. Accessed 03 Aug 2016.
57. Agreement on the Conservation of Populations of European Bats. <http://www.eurobats.org>. Accessed 03 Aug 2016.
58. Cliquet F, Freuling C, Smreczak M, Van der Poel WHM, Horton D, Fooks AR, et al. Development of harmonised schemes for monitoring and reporting of rabies in animals in the European Union. 2010.
59. Schatz J, Fooks AR, McElhinney L, Horton D, Echevarria J, Vazquez-Moron S, et al. Bat rabies surveillance in Europe. *Zoonoses Public Health*. 2013;60:22–34.
60. Battersby J. Guidelines for Surveillance and Monitoring of European Bats. Bonn: UNEP/EUROBATS; 2010.
61. Johnson N, McElhinney LM, Smith J, Lowings P, Fooks AR. Phylogenetic comparison of the genus Lyssavirus using distal coding sequences of the glycoprotein and nucleoprotein genes. *Arch Virol*. 2002;147:2111–23.
62. Amengual B, Whitby JE, King A, Cobo JS, Bourhy H. Evolution of European bat lyssaviruses. *J Gen Virol*. 1997;78:2319–28.
63. Davis PL, Holmes EC, Larrous F, Van der Poel WHM, Tjørnehøj K, Alonso WJ, et al. Phylogeography, population dynamics, and molecular evolution of European bat lyssaviruses. *J Virol*. 2005;79:10487–97.
64. Fooks AR, Selden D, Brookes SM, Johnson N, Marston DA, Jolliffe TA, et al. Identification of a European bat lyssavirus type 2 in a Daubenton's bat found in Lancashire. *Vet Rec*. 2004;155:606–7.
65. Schatz J, Freuling CM, Auer E, Goharriz H, Harbusch C, Johnson N, et al. Enhanced passive bat rabies surveillance in indigenous bat species from Germany - a retrospective study. *PLoS Negl Trop Dis*. 2014; doi:10.1371/journal.pntd.0002835.
66. Banyard AC, Johnson N, Voller K, Hicks D, Nunez A, Hartley M, et al. Repeated detection of European bat lyssavirus type 2 in dead bats found at a single roost site in the UK. *Arch Virol*. 2009;154:1847–50.
67. Horton DL, Voller K, Haxton B, Johnson N, Leech S, Goddard T, et al. European bat lyssavirus type 2 in a Daubenton's bat in Scotland. *Vet Rec*. 2009;165:383–4.

Submit your next manuscript to BioMed Central and we will help you at every step:

- We accept pre-submission inquiries
- Our selector tool helps you to find the most relevant journal
- We provide round the clock customer support
- Convenient online submission
- Thorough peer review
- Inclusion in PubMed and all major indexing services
- Maximum visibility for your research

Submit your manuscript at  
[www.biomedcentral.com/submit](http://www.biomedcentral.com/submit)

