



**HAL**  
open science

## Outbreak of colistin-resistant carbapenemase-producing *Klebsiella pneumoniae* in Tunisia

Wejdène Mansour, Marisa Haenni, Estelle Saras, Raoudha Grami, Yosra Mani, Anis Ben Haj Khalifa, Souhail El Atrouss, Mohamed Kheder, Mohamed Fekih Hassen, Nouredine Boujâafar, et al.

► **To cite this version:**

Wejdène Mansour, Marisa Haenni, Estelle Saras, Raoudha Grami, Yosra Mani, et al.. Outbreak of colistin-resistant carbapenemase-producing *Klebsiella pneumoniae* in Tunisia. *Journal of Global Antimicrobial Resistance*, 2017, 10, pp.88 - 94. 10.1016/j.jgar.2017.03.017 . anses-04013258

**HAL Id: anses-04013258**

**<https://anses.hal.science/anses-04013258>**

Submitted on 3 Mar 2023

**HAL** is a multi-disciplinary open access archive for the deposit and dissemination of scientific research documents, whether they are published or not. The documents may come from teaching and research institutions in France or abroad, or from public or private research centers.

L'archive ouverte pluridisciplinaire **HAL**, est destinée au dépôt et à la diffusion de documents scientifiques de niveau recherche, publiés ou non, émanant des établissements d'enseignement et de recherche français ou étrangers, des laboratoires publics ou privés.

Copyright



## Outbreak of colistin-resistant carbapenemase-producing *Klebsiella pneumoniae* in Tunisia<sup>☆</sup>



Wejdène Mansour<sup>a,b,\*</sup>, Marisa Haenni<sup>c</sup>, Estelle Saras<sup>c</sup>, Raoudha Grami<sup>a,c</sup>, Yosra Mani<sup>a</sup>, Anis Ben Haj Khalifa<sup>d,e</sup>, Souhail el Atrouss<sup>f</sup>, Mohamed Kheder<sup>d</sup>, Mohamed Fekih Hassen<sup>f</sup>, Nouredine Boujâfar<sup>a,e</sup>, Olfa Bouallegue<sup>a,g</sup>, Jean-Yves Madec<sup>c</sup>

<sup>a</sup> Unité de recherche: Résistances bactériennes émergentes et sécurité des soins «UR12SP37», Laboratoire de microbiologie, Hôpital Universitaire Sahloul, Sousse, Tunisia

<sup>b</sup> Institut Supérieur des Sciences Appliquées et de Technologie de Mahdia, Hiboun, Tunisia

<sup>c</sup> French Agency for Food, Environmental and Occupational Health & Safety (ANSES), Unité antibiorésistance et virulence bactériennes, Lyon, France

<sup>d</sup> Laboratoire de microbiologie, Hôpital Tahar Sfar, Mahdia, Tunisia

<sup>e</sup> Faculté de pharmacie de Monastir, Université de Monastir, Monastir, Tunisia

<sup>f</sup> Service de réanimation, Hôpital Tahar Sfar, Mahdia, Tunisia

<sup>g</sup> Faculté de médecine de Sousse, Université de Sousse, Sousse, Tunisia

### ARTICLE INFO

#### Article history:

Received 21 December 2016

Received in revised form 21 March 2017

Accepted 27 March 2017

Available online 12 July 2017

#### Keywords:

*Klebsiella pneumoniae*

OXA-48

NDM-1

Colistin

*mgrB*

### ABSTRACT

**Objectives:** Mechanisms of colistin and carbapenem resistance among a collection of *Klebsiella pneumoniae* isolates recovered in a university hospital in Tunisia were studied.

**Methods:** In vitro antimicrobial susceptibility testing, S1 nuclease pulsed-field gel electrophoresis (S1-PFGE), Southern blotting and PCR-based replicon typing (PBRT) were performed. Extended-spectrum  $\beta$ -lactamases (ESBLs), carbapenemases, AmpC-type enzymes and *mgrB* genes were detected by PCR and sequencing. Clonality of isolates was assessed by PFGE and multilocus sequence typing (MLST).

**Results:** Of 940 Enterobacteriaceae isolates recovered from June 2015 to March 2016 in Tahar Sfar Hospital (Mahdia, Tunisia), 220 were identified as *K. pneumoniae*, among which 29 were carbapenem-resistant. Carbapenem resistance was mostly due to expression of *bla*<sub>OXA-48</sub> or *bla*<sub>OXA-204</sub> in combination with *bla*<sub>CMY-4</sub>. Seven isolates carried *bla*<sub>NDM-1</sub>, of which two also harboured *bla*<sub>OXA-48</sub>, together with *bla*<sub>CMY-16</sub> in one of them. All but two isolates also harboured *bla*<sub>CTX-M-15</sub>. All 20 *bla*<sub>OXA-48</sub> genes were part of transposon Tn1999 on an IncL plasmid, whereas *bla*<sub>OXA-204</sub> was found on transposon Tn2016 on an IncA/C plasmid. Finally, all *bla*<sub>NDM-1</sub> genes were located within a Tn125 transposon on an IncFIIk plasmid. Interestingly, 7 (24.1%) of 29 carbapenem-resistant isolates were resistant to colistin, of which 6 were assigned to ST101, had similar PFGE profiles and presented the same 2-kb insertion in the *mgrB* gene.

**Conclusions:** This study reports, for the first time in Tunisia, the full molecular characterisation of colistin resistance in *K. pneumoniae*. There is an urgent need for control measures and prudent use of colistin in treatment of infections with carbapenemase-producing *K. pneumoniae*.

© 2017 International Society for Chemotherapy of Infection and Cancer. Published by Elsevier Ltd. All rights reserved.

## 1. Introduction

Enterobacteriaceae are a large family of Gram-negative bacteria that includes human pathogens such as *Klebsiella pneumoniae*, a bacterial species continuously acquiring resistance determinants in healthcare settings worldwide. Until recently, carbapenems were one of the favoured antibiotics used to manage human infections due to multidrug-resistant (MDR) *K. pneumoniae*. However, carbapenemase-producing *K. pneumoniae* isolates emerged a decade ago and disseminated worldwide, principally producing the OXA-48-like, NDM-type and KPC-type enzymes [1].

<sup>☆</sup> This study was presented in part at the 26th European Congress of Clinical Microbiology and Infectious Diseases (ECCMID), 9–12 April 2016, Amsterdam, The Netherlands [EV0451].

\* Corresponding author. Present address: Unité de recherche: Résistances bactériennes émergentes et sécurité des soins «UR12SP37», Laboratoire de microbiologie, Hôpital Universitaire Sahloul, Sousse, Tunisia. Fax: +216 73 68 21 90.

E-mail address: [wejdene.mansour@gmail.com](mailto:wejdene.mansour@gmail.com) (W. Mansour).

To tackle the issue of carbapenem-resistant isolates, colistin was considered one of the last-resort molecules. Thus, colistin regained strong interest in human medicine following a long period of rare use because of its nephrotoxicity and neurotoxicity. Unfortunately, the first report of colistin- and carbapenem-resistant *K. pneumoniae* occurred shortly after the re-introduction of colistin, and the increased reliance on colistin has resulted in the emergence of colistin-resistant isolates in many areas [2,3].

Colistin resistance in *K. pneumoniae* can be mediated by alterations in the two-component systems PhoPQ and PmrAB, but the most frequently encountered resistance mechanism is inactivation of the *mgrB* gene owing to insertions/mutations in the promoter or coding sequence. Whereas *mgrB* mutations are selected by the use of colistin, resistant isolates of epidemic clones such as ST258 or ST11 can then further spread without colistin exposure and cause major outbreaks [4]. In contrast, the presence of the recently identified plasmid-mediated *mcr-1* gene is still rare in *K. pneumoniae* [2,5].

In Tunisia, OXA-48 is considered as endemic; moreover, very recent reports also demonstrated the presence of NDM-1- and KPC-2-producing *K. pneumoniae* in hospital settings [6–9]. Colistin is often prescribed in Tunisian hospitals against these MDR pathogens. However, there is a lack of information about the prevalence and mechanisms of colistin resistance in countries such as Tunisia, largely due to the methods used for the determination of colistin susceptibility, which are generally not adequate. Thus, the aim of this study was to determine the prevalence and mechanisms of colistin and carbapenem resistance among a collection of carbapenemase-resistant *K. pneumoniae* isolates recovered in Tahar Sfar University Hospital (Mahdia, Tunisia) over a 10-month period.

## 2. Materials and methods

### 2.1. Bacterial isolates

From June 2015 to March 2016, a total of 940 Enterobacteriaceae isolates were collected from different wards of Tahar Sfar University Hospital, a 800-bed university hospital located in the city of Mahdia in the Centre-East of Tunisia. All isolates were identified using the API20E galleries (bioMérieux, Marcy-l'Étoile, France). Screening for carbapenem resistance was performed by the disk diffusion method, and all isolates presenting a non-susceptible phenotype to ertapenem were retained for further studies.

### 2.2. Antimicrobial susceptibility testing

Antimicrobial susceptibility testing was performed on Muller–Hinton agar plates (bioMérieux, Craaponne, France) using the standard disk diffusion procedure as described by the Comité de l'antibiogramme de la Société Française de Microbiologie (CA-SFM; <http://www.sfm-microbiologie.org>). A total of 16  $\beta$ -lactam (amoxicillin, piperacillin, ticarcillin, amoxicillin/clavulanic acid, piperacillin/tazobactam, ticarcillin/clavulanic acid, cefalotin, cefuroxime, cefotaxime, ceftiofur, ceftazidime, ceftoxitin, cefepime, cefquinome, aztreonam and ertapenem) and 16 non- $\beta$ -lactam (tetracycline, kanamycin, tobramycin, gentamicin, amikacin, apramycin, netilmicin, streptomycin, florfenicol, chloramphenicol, colistin, sulfonamides, trimethoprim, nalidixic acid, ofloxacin and enrofloxacin) antibiotics were tested. *Escherichia coli* ATCC 25922 was used as a quality control strain. Minimum inhibitory concentrations (MICs) of ertapenem, imipenem, meropenem and tigecycline were determined using Etest strips (bioMérieux, Craaponne, France) according to the manufacturer's instructions. Results were interpreted according to European Committee on

Antimicrobial susceptibility testing (EUCAST) 2015 breakpoints (<http://www.eucast.org>). The MIC of colistin was determined by broth microdilution in 96-well plates (Thermo Fisher Scientific, Waltham, MA) according to EUCAST recommendations. Isolates presenting an MIC  $>2 \mu\text{g}/\text{mL}$  were considered resistant.

Metallo- $\beta$ -lactamase (MBL) production was tested by the modified Hodge test, the Carba NP test and the ethylene diamine tetra-acetic acid (EDTA) double-disk synergy test.

### 2.3. Screening for $\beta$ -lactamases and *mgrB* genes

PCR experiments were performed to screen for genes encoding extended-spectrum  $\beta$ -lactamases (ESBLs), carbapenemases and AmpC-type enzymes (*bla*<sub>CTX-M</sub>, *bla*<sub>KPC</sub>, *bla*<sub>VIM</sub>, *bla*<sub>IMP</sub>, *bla*<sub>NDM</sub>, *bla*<sub>OXA-48</sub>, *bla*<sub>CMY</sub> and *bla*<sub>DHA</sub>) as described previously [10–12]. The *mgrB* gene was amplified with specific external primers [13]. All positive amplicons were sequenced by GENEWIZ (London, UK).

### 2.4. Molecular characterisation of plasmids

Plasmids were typed in donor cells using a PCR-based replicon typing (PBRT) kit (Diatheva, Fano, Italy) [14]. Plasmids carrying carbapenemase genes were determined by S1 nuclease pulsed-field gel electrophoresis (S1-PFGE) followed by Southern blotting using the appropriate digoxigenin (DIG)-labelled probes. Detection was performed using the DIG DNA Labelling and Detection Kit (Roche Diagnostics, Indianapolis, IN) according to the manufacturer's instructions.

### 2.5. Genetic environment of carbapenemase genes

PCR mapping was performed on all isolates to assess the genetic environment of the carbapenemase genes. Insertion sequence IS1999 upstream the *bla*<sub>OXA-48</sub> gene was detected to confirm the presence of transposon Tn1999, and insertion of IS1R into IS1999 was screened to characterise the Tn1999 element [15–17]. The presence of ISEcp1 upstream the *bla*<sub>OXA-204</sub> gene was detected to assess the presence of the Tn2016 transposon [18]. Localisation of the *bla*<sub>NDM-1</sub> gene on transposon Tn125 was assessed by PCR, and all genes of Tn125 were detected using the primers described in Table 1.

### 2.6. Clonality of the isolates

The clonality of the *K. pneumoniae* isolates was investigated by PFGE using the *Xba*I restriction endonuclease (Promega, Charbonnières-les-Bains, France). Computer analysis of the PFGE banding

**Table 1**  
Oligonucleotides designed for PCR mapping of the sequences surrounding *bla*<sub>NDM-1</sub>.

Primer	Sequence 5' → 3'	Gene	Amplicon size (bp)
ISAbA125For	AAGAAGGCTTTTCAGCCAGA	Tn125	9834
ISAbA125Rev	AATGCTGATCTGCCTGATTT		
<i>ble</i> <sub>MBL</sub> For	GCGATTTCGATGTGACAGAG	<i>ble</i> <sub>MBL</sub>	332
<i>ble</i> <sub>MBL</sub> Rev	TCAGTCGGGGTCTCGGAT		
<i>iso</i> For	ACTATGCCCGGTTGGTGT	<i>iso</i>	446
<i>iso</i> Rev	GGCAACATTCGTCGGATTTA		
<i>tat</i> For	ATCGATTGTTCCGACAGAGG	<i>tat</i>	829
<i>tat</i> Rev	ACGAGGTCTTCCTCTGTC		
<i>dct</i> For	GTTCTGATGGATGCAGTTGG	<i>dct</i>	252
<i>dct</i> Rev	GCTACCCTATGCCGGTGAG		
<i>groES</i> -For	TTTTCCAGTCAATCAACCA	<i>groES</i>	312
<i>groES</i> -Rev	CGAACAGGTCGCTTCTCTTC		
<i>groEL</i> -For	GTCAACGTGCTGCCCAAC	<i>groEL</i>	1503
<i>groEL</i> -Rev	CATCGCTTCGGTGGTGAT		
IScr21For	CGCTGCTGTACCGGCTAGT	IScr21	1374
IScr21Rev	CGCCGTGTTTCTCGAAGT		

**Table 2**  
Patient demographics and epidemiological data of carbapenemase-producing *Klebsiella pneumoniae*.

Isolate	Date	Age (years)	Sex	Ward	MLST	Additional resistance	Treatment	Discharge disposition
P1	9 June 2015	30	F	ICU	ST147	KAN, GEN, TOB, AMK, CHL, TET, SUL, TMP, NAL, ENR	Cefotaxime, tazobactam, amikacin	Alive
P2	8 July 2015	60	M	Surgery	ST101	STR, KAN, GEN, TOB, TET, SUL, TMP, NAL, ENR	Amoxicillin/clavulanic acid, ciprofloxacin, ofloxacin, imipenem, pristinamycin	Alive
P3	27 July 2015	72	F	ICU	ST147	SUL, TMP, NAL, ENR	Imipenem, tigecycline, amikacin	Alive
P4	13 August 2015	69	F	ICU	ST147	KAN, TOB, TET, COL, SUL, TMP, NAL, ENR	Amoxicillin/clavulanic acid, piperacillin, imipenem, tigecycline, amikacin, colistin	Dead
P5	14 August 2015	N/A	F	Urology	ST101	STR, KAN, GEN, TOB, TET, SUL, TMP, NAL, ENR	N/A	N/A
P6	15 August 2015	90	M	ICU	ST101	STR, KAN, GEN, TOB, TET, SUL, TMP, NAL, ENR	N/A	Dead
P7	4 September 2015	45	F	Gynaecology	ST147	KAN, GEN, TOB, TET, SUL, TMP, NAL, ENR	Amoxicillin/clavulanic acid	Alive
P8-1	23 October 2015	55	F	Urology	ST147	SUL, TMP, NAL, ENR	Ertapenem, fosfomycin, amikacin, colistin	Alive
P8-2	12 November 2015	55	F	Surgery	ST147	GEN, TOB, TET, SUL, TMP, NAL, ENR	Ertapenem, fosfomycin, amikacin, colistin	Alive
P9	7 October 2015	20	M	ICU	ST147	KAN, GEN, TOB, TET, SUL, TMP, NAL, ENR	N/A	Dead
P10-1	3 November 2015	75	F	ICU	ST147	KAN, GEN, TOB, AMK, CHL, TET, SUL, TMP, NAL, ENR	Amoxicillin/clavulanic acid, tazobactam, tigecycline	Dead
P10-2	2 December 2015	75	F	ICU	ST101	KAN, GEN, TOB, AMK, CHL, TET, SUL, TMP, NAL, ENR	Amoxicillin/clavulanic acid, tazobactam, tigecycline	Dead
P11	4 November 2015	76	M	ICU	ST101	STR, KAN, GEN, TOB, TET, SUL, TMP, NAL, ENR	N/A	Dead
P12	8 November 2015	85	F	ICU	ST101	STR, KAN, GEN, TOB, TET, SUL, TMP, NAL, ENR	N/A	Dead
P13-1	9 November 2015	60	F	ICU	ST101	STR, KAN, GEN, TOB, TET, SUL, TMP, NAL, ENR	Amoxicillin/clavulanic acid, colistin	Alive
P13-2	17 December 2015	60	F	ICU	ST101	STR, KAN, GEN, TOB, TET, COL, TMP, NAL, ENR	Tigecycline, piperacillin, amikacin	Alive
P13-3	6 January 2016	60	F	ICU	ST101	STR, KAN, GEN, TOB, TET, COL, TMP, NAL, ENR	Fosfomycin	Alive
P14	26 December 2015	N/A	M	Urology	ST101	STR, KAN, GEN, TOB, TET, COL, TMP, NAL, ENR	N/A	N/A
P15	31 December 2015	50	F	Orthopaedics	ST101	STR, KAN, GEN, TOB, TET, TMP, NAL, ENR	Amoxicillin/clavulanic acid, gentamicin, ciprofloxacin, imipenem, amikacin, tigecycline	Alive
P16	21 January 2016	NA	F	Orthopaedics	ST101	STR, KAN, GEN, TOB, TET, SUL, TMP, NAL, ENR	N/A	N/A
P17	22 January 2016	79	M	Urology	ST101	STR, KAN, GEN, TOB, TET, COL, TMP, NAL, ENR	Cefotaxime, ciprofloxacin	Alive
P18	8 February 2016	72	M	Surgery	ST147	KAN, TOB, TET, SUL, TMP, NAL, ENR	Amoxicillin/clavulanic acid, fosfomycin, ceftazidime	Alive
P19	12 February 2016	27	M	ICU	ST101	STR, KAN, GEN, TOB, TET, COL, TMP, NAL, ENR	Ciprofloxacin, imipenem, colistin	Alive
P20	15 February 2016	72	M	ICU	ST392	GEN, TOB, TET, SUL, TMP, NAL, ENR	Tigecycline, imipenem, colistin	Alive
P21	26 February 2016	N/A	M	ICU	ST147	STR, KAN, GEN, TOB, TET, TMP, NAL, ENR	N/A	N/A
P22	29 February 2016	NA	F	ICU	ST101	STR, KAN, GEN, TOB, TET, SUL, TMP, NAL, ENR	N/A	N/A
P23	8 March 2016	58	F	General medicine	ST101	STR, KAN, GEN, TOB, TET, COL, TMP, NAL, ENR	Cefotaxime, levofloxacin, imipenem, amikacin, teicoplanin	Alive
P24	15 March 2016	68	F	ICU	ST147	SUL, TMP, NAL, ENR	Ertapenem	Alive
P25	22 March 2016	73	M	Surgery	ST101	STR, KAN, GEN, TOB, TET, TMP, NAL, ENR	Amoxicillin/clavulanic acid, fusidic acid, tigecycline	Alive

MLST, multilocus sequence typing; ICU, intensive care unit; KAN, kanamycin; GEN, gentamicin; TOB, tobramycin; AMK, amikacin; CHL, chloramphenicol; TET, tetracycline; SUL, sulfonamides; TMP, trimethoprim; NAL, nalidixic acid; ENR, enrofloxacin; STR, streptomycin; COL, colistin; N/A, not assigned.

patterns was performed using the BioNumerics fingerprinting software package (Applied Maths, Sint-Martens-Latem, Belgium; <http://www.applied-maths.com/bionumerics>). Dice similarity indices were used to generate a dendrogram describing the relationships among PFGE profiles. Tolerance was set at 1% and optimisation at 0.5%.

The *K. pneumoniae* genetic background was determined by multilocus sequence typing (MLST) through amplification of internal fragments of seven housekeeping genes (*rpoB*, *gapA*, *mdh*, *pgi*, *phoE*, *infB* and *tonB*) as described previously [19]. The allelic profiles of the gene sequences and the sequence types (STs) were determined via the electronic database at the *K. pneumoniae* MLST website (<http://pubmlst.org/>).

### 3. Results

#### 3.1. Epidemiology of carbapenem-resistant *K. pneumoniae* isolates

Of the 940 Enterobacteriaceae isolates recovered, 220 (23.4%) were identified as *K. pneumoniae*, among which 29 (13.2%) were defined as carbapenem-resistant. The distribution of carbapenem-resistant *K. pneumoniae* isolates among the different hospital wards was as follows: intensive care unit (ICU) ( $n=17$ ); urology ( $n=4$ ); surgery ( $n=4$ ); orthopaedics ( $n=2$ ); gynaecology ( $n=1$ ); and general medicine ( $n=1$ ) (Table 2).

#### 3.2. Antimicrobial susceptibility testing and phenotypic detection of $\beta$ -lactamases

The 29 *K. pneumoniae* isolates exhibiting resistance to ertapenem by disk diffusion presented MICs ranging from 3  $\mu\text{g}/\text{mL}$  to  $>32 \mu\text{g}/\text{mL}$  (Table 3). These isolates showed resistance to all  $\beta$ -lactams tested. In addition, seven of them were positive by phenotypic screening for MBL.

All isolates were MDR since they presented resistance to at least three antibiotic families (Table 3). The most frequently encountered resistance was to trimethoprim (100%), quinolones and fluoroquinolones (100%), tetracycline (89.7%), aminoglycosides (10.3–82.8% depending on the molecule) and sulfamethoxazole (69.0%). In addition, 7 (24.1%) of the 29 *K. pneumoniae* isolates were resistant to colistin with MICs ranging from 12 to 24  $\mu\text{g}/\text{mL}$  (Table 3).

#### 3.3. Molecular characterisation of $\beta$ -lactamases

Resistance to carbapenems was due essentially to expression of the *bla*<sub>OXA-48-like</sub> gene alone (22/29; 75.9%), with 18 (81.8%) of the 22 isolates presenting the *bla*<sub>OXA-48</sub> gene and the remaining 4 isolates (18.2%) harbouring the *bla*<sub>OXA-204</sub> gene in systematic combination with the *bla*<sub>CMY-4</sub> gene (Table 3). The seven isolates that tested positive for the presence of a MBL were NDM-1 producers; two isolates (6.9%) co-produced *bla*<sub>OXA-48</sub> and *bla*<sub>NDM-1</sub> genes. One of these NDM-1- and OXA-48-producing isolates displayed an additional *bla*<sub>CMY-16</sub> gene. All but two *K. pneumoniae* isolates harboured the *bla*<sub>CTX-M-15</sub> ESBL gene (Table 3).

#### 3.4. Plasmid characterisation

All 20 *bla*<sub>OXA-48</sub> genes were identified on an IncL plasmid. PCR mapping showed that the *bla*<sub>OXA-48</sub> gene was systematically part of the composite transposon Tn1999. Tn1999.1 and the variant Tn1999.2, presenting an IS1R disruption of the upstream IS1999 element, were detected in 2 and 18 cases, respectively. In contrast, the *bla*<sub>OXA-204</sub> gene proved to be located on an IncA/C plasmid. The genetic environment of the *bla*<sub>OXA-204</sub> gene carried by four isolates (P3, P8-1, P8-2 and P21) had an overall backbone similar to the Tn2016 transposon with the presence of the *ISEcp1* element upstream the *bla*<sub>OXA-204</sub> gene (Table 3). Finally, the *bla*<sub>NDM-1</sub> gene

**Table 3**  
Molecular characteristics of carbapenemase-producing *Klebsiella pneumoniae*.

Isolate	MLST	Carbapenemase gene	Carbapenemase-carrying plasmid	Associated $\beta$ -lactamase	Tn1999-type	MIC ( $\mu\text{g}/\text{mL}$ )					<i>mgrB</i> genotype
						IPM	ETP	MEM	TIG	COL	
P1	ST147	<i>bla</i> <sub>NDM-1</sub>	IncFIIk	<i>bla</i> <sub>CTX-M-15</sub>	–	24	24	32	6	<0.5	Wild-type
P2	ST101	<i>bla</i> <sub>NDM-1</sub> , <i>bla</i> <sub>OXA-48</sub>	IncFIIk, IncL	<i>bla</i> <sub>CTX-M-15</sub> , <i>bla</i> <sub>CMY-16</sub>	Tn1999.2	>32	>32	>32	4	<0.5	Wild-type
P3	ST147	<i>bla</i> <sub>OXA-204</sub>	IncA/C	<i>bla</i> <sub>CMY-4</sub>	–	4	>32	>32	0.75	<0.5	Wild-type
P4	ST147	<i>bla</i> <sub>NDM-1</sub>	IncFIIk	<i>bla</i> <sub>CTX-M-15</sub>	–	8	24	32	2	16	ISKpn14 insertion
P5	ST101	<i>bla</i> <sub>OXA-48</sub>	IncL	<i>bla</i> <sub>CTX-M-15</sub>	Tn1999.2	2	>32	16	0.5	<0.5	Wild-type
P6	ST101	<i>bla</i> <sub>OXA-48</sub>	IncL	<i>bla</i> <sub>CTX-M-15</sub>	Tn1999.2	2	32	16	0.5	<0.5	Wild-type
P7	ST147	<i>bla</i> <sub>NDM-1</sub>	IncFIIk	<i>bla</i> <sub>CTX-M-15</sub>	–	24	24	32	1.5	<0.5	Wild-type
P8-1	ST147	<i>bla</i> <sub>OXA-204</sub>	IncA/C	<i>bla</i> <sub>CMY-4</sub>	–	2	>32	>32	0.75	<0.5	Wild-type
P8-2	ST147	<i>bla</i> <sub>OXA-204</sub>	IncA/C	<i>bla</i> <sub>CTX-M-15</sub> , <i>bla</i> <sub>CMY-4</sub>	–	8	>32	>32	0.5	<0.5	Wild-type
P9	ST147	<i>bla</i> <sub>NDM-1</sub>	IncFIIk	<i>bla</i> <sub>CTX-M-15</sub>	–	24	24	>32	1.5	<0.5	Wild-type
P10-1	ST147	<i>bla</i> <sub>NDM-1</sub>	IncFIIk	<i>bla</i> <sub>CTX-M-15</sub>	–	32	>32	>32	1.5	<0.5	Wild-type
P10-2	ST101	<i>bla</i> <sub>OXA-48</sub>	IncL	<i>bla</i> <sub>CTX-M-15</sub>	Tn1999.2	4	16	16	0.5	<0.5	Wild-type
P11	ST101	<i>bla</i> <sub>OXA-48</sub>	IncL	<i>bla</i> <sub>CTX-M-15</sub>	Tn1999.2	4	32	16	0.5	<0.5	Wild-type
P12	ST101	<i>bla</i> <sub>OXA-48</sub>	IncL	<i>bla</i> <sub>CTX-M-15</sub>	Tn1999.2	2	32	16	0.5	<0.5	Wild-type
P13-1	ST101	<i>bla</i> <sub>OXA-48</sub>	IncL	<i>bla</i> <sub>CTX-M-15</sub>	Tn1999.2	2	>32	16	0.75	<0.5	Wild-type
P13-2	ST101	<i>bla</i> <sub>OXA-48</sub>	IncL	<i>bla</i> <sub>CTX-M-15</sub>	Tn1999.2	2	>32	16	0.75	16	2-kb insertion
P13-3	ST101	<i>bla</i> <sub>OXA-48</sub>	IncL	<i>bla</i> <sub>CTX-M-15</sub>	Tn1999.2	2	>32	16	0.75	16	2-kb insertion
P14	ST101	<i>bla</i> <sub>OXA-48</sub>	IncL	<i>bla</i> <sub>CTX-M-15</sub>	Tn1999.2	4	16	16	1	16	2-kb insertion
P15	ST101	<i>bla</i> <sub>OXA-48</sub>	IncL	<i>bla</i> <sub>CTX-M-15</sub>	Tn1999.2	2	32	16	0.5	<0.5	Wild-type
P16	ST101	<i>bla</i> <sub>OXA-48</sub>	IncL	<i>bla</i> <sub>CTX-M-15</sub>	Tn1999.2	2	32	16	0.38	<0.5	Wild-type
P17	ST101	<i>bla</i> <sub>OXA-48</sub>	IncL	<i>bla</i> <sub>CTX-M-15</sub>	Tn1999.2	2	>32	16	1.5	16	2-kb insertion
P18	ST147	<i>bla</i> <sub>NDM-1</sub> , <i>bla</i> <sub>OXA-48</sub>	IncFIIk, IncL	<i>bla</i> <sub>CTX-M-15</sub>	Tn1999.1	2	4	4	2	<0.5	Wild-type
P19	ST101	<i>bla</i> <sub>OXA-48</sub>	IncL	<i>bla</i> <sub>CTX-M-15</sub>	Tn1999.2	2	>32	16	1	12	2-kb insertion
P20	ST392	<i>bla</i> <sub>OXA-48</sub>	IncL	<i>bla</i> <sub>CTX-M-15</sub>	Tn1999.2	1.5	3	1	4	<0.5	Wild-type
P21	ST147	<i>bla</i> <sub>OXA-204</sub>	IncA/C	<i>bla</i> <sub>CTX-M-15</sub> , <i>bla</i> <sub>CMY-4</sub>	–	8	>32	>32	0.75	1	Wild-type
P22	ST101	<i>bla</i> <sub>OXA-48</sub>	IncL	<i>bla</i> <sub>CTX-M-15</sub>	Tn1999.1	4	32	16	0.5	>0.5	Wild-type
P23	ST101	<i>bla</i> <sub>OXA-48</sub>	IncL	<i>bla</i> <sub>CTX-M-15</sub>	Tn1999.2	3	>32	16	0.75	24	2-kb insertion
P24	ST147	<i>bla</i> <sub>OXA-48</sub>	IncL	<i>bla</i> <sub>CTX-M-15</sub>	Tn1999.2	32	>32	32	1.5	>0.5	Wild-type
P25	ST101	<i>bla</i> <sub>OXA-48</sub>	IncL	<i>bla</i> <sub>CTX-M-15</sub>	Tn1999.2	–	–	–	–	<0.5	Wild-type

MLST, multilocus sequence typing; MIC, minimum inhibitory concentration; IPM, imipenem; ETP, ertapenem; MEM, meropenem; TIG, tigecycline; COL, colistin.

was carried on an IncFIIk plasmid in all NDM-1-positive isolates. In all these strains, *bla*<sub>NDM-1</sub> was located within a Tn125 transposon comprising the 3' part of the upstream IS*Aba125* element and the *bla*<sub>NDM-1</sub>, *ble*<sub>MBL</sub>, *iso*, *tat*, *dct*, *groES* and *groEL* genes, which was then truncated after the *groEL* gene.

### 3.5. Analysis of *mgrB* gene sequences in colistin-resistant isolates

The entire *mgrB* gene of the 29 carbapenem-resistant isolates was amplified by PCR and was sequenced, including the seven colistin-resistant isolates and 22 colistin-susceptible isolates investigated for control purposes. Sequence analysis of the amplicons showed that the seven colistin-resistant strains had a larger amplicon size compared with the wild-type gene present in the susceptible isolates (Table 3). In one strain (P4), analysis revealed that the truncation resulted from a 772-bp insertion corresponding to the *ISKpn14* sequence. This insertion occurred in the putative *mgrB* promoter region, 11 nucleotides upstream the start codon of the *mgrB* gene (Table 3). In the six other colistin-resistant isolates, *mgrB* was truncated by the same 2-kb sequence between nucleotides 123 and 124 of the *mgrB* coding sequence. The inserted sequence at the origin of the truncation of the *mgrB* gene is identical to *K. pneumoniae* sequences present in published complete genome but falls in non-annotated regions and does not match with any identified IS sequences (Table 3).

### 3.6. Clonality of the isolates

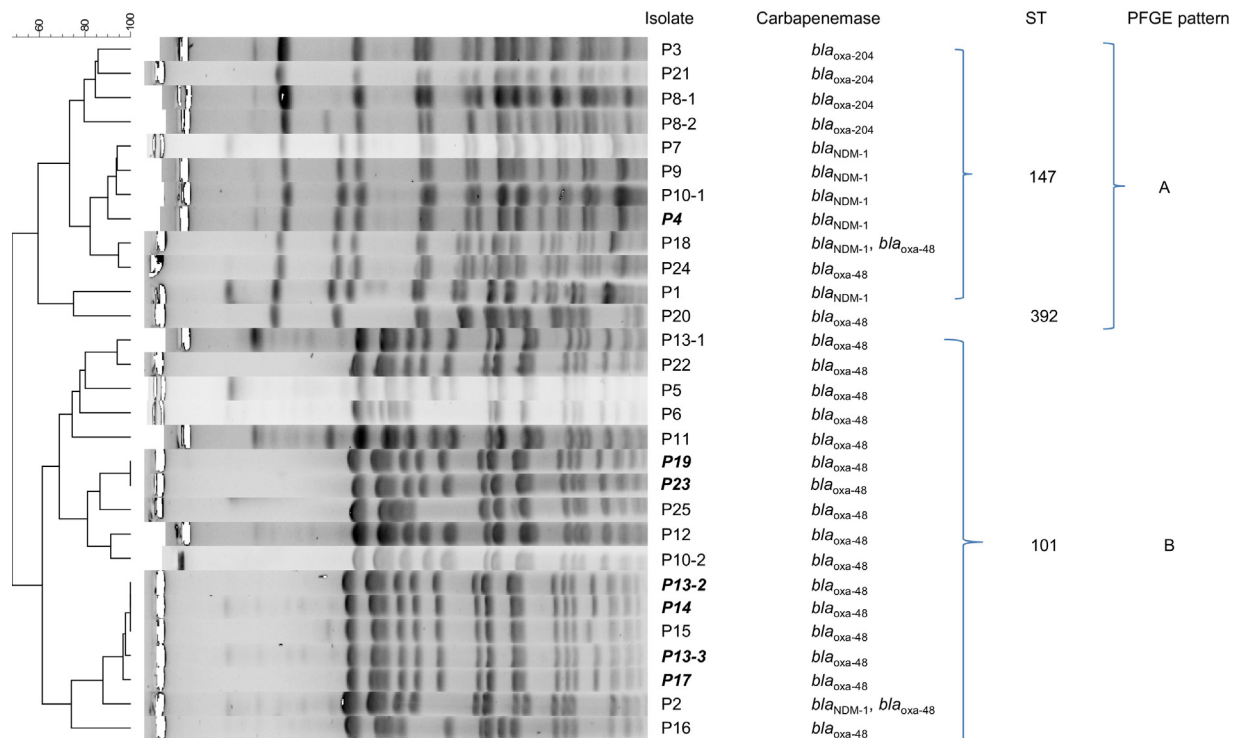
According to the criteria of Tenover et al. [20], *Xba*I PFGE profiles revealed the presence of two major clusters, namely clusters A and B (Fig. 1). These two PFGE clusters almost perfectly matched with the identification of ST147 and ST101, respectively (Fig. 1). Only one isolate belonging to cluster A was identified as ST392, which is closely related to ST147 since it differs by only three point mutations in the *tonB* allele (allele 40 in ST392 compared with

allele 38 in ST147). ST147 was found in 11 isolates recovered from four wards, i.e. ICU (*n*=7), surgery (*n*=2), gynaecology (*n*=1) and urology (*n*=1), whereas ST392 was found in one patient hospitalised in the ICU ward (P20). ST101 corresponded to the dominant cluster B (*n*=17). These isolates originated from five different wards, i.e. ICU (*n*=9), urology (*n*=3), surgery (*n*=2), orthopaedics (*n*=2) and general medicine (*n*=1).

Six of the seven NDM-producers were assigned to ST147, whereas the remaining isolate was assigned to ST101. The opposite situation was described for the colistin-resistant isolates, where six were assigned to ST101 and presented the abovementioned identical insertion in the *mgrB* gene whereas the remaining isolate was assigned to ST147 and displayed a different insertion (*ISKpn14*) in the promoter region of *mgrB*. Interestingly, the first colistin-resistant isolate identified originated from patient P13, a 60-year-old woman admitted in the ICU ward in August 2015 for herpetic encephalitis. Three successive OXA-48- and CTX-M-15-producing *K. pneumoniae* isolates were collected from this patient (P13-1, P13-2 and P13-3) in November 2015, December 2015 and January 2016, respectively. P13-1 was susceptible to colistin and the patient was thus treated with colistin plus amoxicillin/clavulanic acid. The patient rapidly developed renal failure, probably associated with colistin therapy, and a colistin-resistant isolate (P13-2) was identified from a surgical site, presenting an *mgrB* gene inactivated by the insertion of a 2-kb sequence between nucleotides 123 and 124. The patient finally recovered after successive treatments with tigecycline/amikacin and fosfomycin.

## 4. Discussion

This study provides a molecular insight in the epidemiology of carbapenem-resistant *K. pneumoniae* during a 10-month period spanning 2015–2016 at Tahar Sfar University Hospital in the city of Mahdia, Tunisia, including the report of an outbreak of colistin-resistant OXA-48-producing ST101 *K. pneumoniae*. The importance



**Fig. 1.** Clonal relationship of carbapenemase-producing *Klebsiella pneumoniae* isolates from hospitalised patients. Strain references presented in bold character correspond to the seven colistin-resistant isolates. ST, sequence type; PFGE, pulsed-field gel electrophoresis.

of this study relies on the highlight of a dramatic evolution towards pan-resistance over the last 10 years in this hospital. First, a retrospective study on the molecular features of ESBL-producing *K. pneumoniae* isolates has shown the large dissemination of the *bla*<sub>CTX-M-15</sub> ESBL gene carried by IncFIIk plasmids among several STs (including, but not only, ST101) between 2009 and 2011 in this setting [21]. Second, the first cases of carbapenem-resistant ST101 and ST147 *K. pneumoniae* isolates, producing OXA-48 and its derivative OXA-204 enzymes, respectively, were isolated in December 2012 and May 2013 in this hospital [22]. Third, two of the first autochthonous Tunisian cases of NDM-1-producing ST147 *K. pneumoniae* isolates were again detected in 2015 in this hospital [6]. Here we report the first characterisation of MDR carbapenem-resistant *K. pneumoniae* isolates presenting resistance to colistin, which were also collected in 2015.

#### 4.1. Carbapenem resistance in *K. pneumoniae* isolates

A 13.2% (29/220) prevalence of carbapenem-resistant *K. pneumoniae* isolates was observed in Tahar Sfar University Hospital, only 4 years after the very first detection of an OXA-48-producing *K. pneumoniae* isolate in December 2012. This indicates a rapid increase of these MDR pathogens in a very short period of time. Moreover, this rise was not only the result of nosocomial dissemination of a unique *K. pneumoniae* clone. Indeed, two major clusters (A and B) comprising 17 and 12 isolates, respectively, were identified as belonging to ST101 (cluster A) and ST147 and ST392 (cluster B). ST101 is the most predominant *K. pneumoniae* clone in several North African countries, including Tunisia [23,24]. ST147, which has caused outbreaks in Europe [25–27], is also emerging as one of the main carbapenem-resistant *K. pneumoniae* clones in Tunisia after the recent description as an OXA-204- and NDM-1-producer [6,23]. ST147 was also recently associated with an infection caused by a *K. pneumoniae* isolate co-producing OXA-48 and VEB-8  $\beta$ -lactamases in another Tunisian hospital [28]. Of note, ST147 has been also reported worldwide spreading different carbapenemase genes. ST392 is reported here for the first time in Tunisia, but this ST closely related to ST101 is known to produce OXA-48-like enzymes in Europe [29], NDM-1 in Columbia [30] and KPC-2 in China where it is considered as an emergent clone [31]. In all, several carbapenemase-encoding genes were detected. The *bla*<sub>OXA-48</sub> gene carried by IncI plasmids was the most prevalent (18/29), followed by *bla*<sub>NDM-1</sub> (7/29) and *bla*<sub>OXA-204</sub> (4/29) on IncFIIk and IncA/C plasmids, respectively. Two isolates co-harboured *bla*<sub>NDM-1</sub> and *bla*<sub>OXA-48</sub>, an accumulation of carbapenem resistance determinants that has recently been reported in Tunisia [6]. Interestingly, *bla*<sub>NDM-1</sub> was found in a ST101 isolate, which is only the second report of this combination after the recent study published by Czobor et al. [32]. Of note, 27/29 isolates additionally carried the *bla*<sub>CTX-M-15</sub> gene and 4 presented *bla*<sub>CMY-4</sub>, thereby highlighting the very frequent combination of several  $\beta$ -lactamases in a single isolate.

#### 4.2. Clonal transmission of a colistin-resistant clone

In this study, 24.1% (7/29) of the carbapenem-resistant *K. pneumoniae* isolates were resistant to colistin, with MICs ranging from 12 to 24  $\mu$ g/mL. To date, in Tunisia only two studies have reported colistin-resistant *K. pneumoniae* strains [8,9]. In the first study, 3 (15.8%) of 19 clinical OXA-48-producing *K. pneumoniae* isolates showed colistin resistance [9]. In the second study, the prevalence of colistin-resistant *K. pneumoniae* in 2014 among all *K. pneumoniae* strains was 2.96% [8]. The proportion described in the current study is much higher than in other Tunisian hospitals and is also higher than that reported in neighbouring countries such as

France (3.6%) [33] or Spain (20%) [34], but much lower than in Italy (43%) where several outbreaks occurred [35].

In Tunisia, the molecular determinants conferring resistance to colistin in *K. pneumoniae* in clinics have never been investigated. Among the seven colistin-resistant isolates, none carried the plasmid-mediated *mcr-1* gene, which has been recently reported to confer resistance to colistin worldwide, including in the animal sector in Tunisia [36]. Of note, *mcr-1* has rarely been reported in *K. pneumoniae* compared with *E. coli* so far. Here, interruption of the *mgrB* gene was responsible for colistin resistance in all isolates, as reported for *K. pneumoniae* in other studies. Indeed, whereas a unique isolate belonged to ST147 and presented an ISKpn14 insertion in the promoter region of the *mgrB* gene, the six other colistin-resistant isolates belonged to ST101 and all shared the same 2-kb insertion in the *mgrB* gene. ST101 colistin-resistant *K. pneumoniae* clones have recently been described in France but were from unrelated single colistin-resistant isolates, as proved by different PFGE profiles [33]. Here, the P13 clinical case clearly suggests the *in vivo* selection of colistin-resistant mutants following colistin therapy, which was followed by the detection of P13-2 and P13-3 colistin-resistant isolates. Subsequently, two other isolates (P14 and P17) presenting identical PFGE profiles were identified in the urology ward, strongly suggesting clonal transmission of the same colistin-resistant ST101 *K. pneumoniae* clone from patient to patient in this hospital. This outbreak of colistin-resistant carbapenem-resistant *K. pneumoniae* is reminiscent of others that have recently been reported, mostly associated with the epidemic ST258 *K. pneumoniae* clone or closely related clones, such as ST512 [4,37–39]. On the other hand, patient P19 presented a close but non-identical PFGE profile. Since this patient had been treated with colistin, we cannot exclude that colistin resistance was selected separately. The last isolate (P23), which has an identical PFGE profile as the P19 isolate, originated from the general medicine ward. It may be hypothesised that this patient had not been treated with colistin and thus likely acquired the colistin-resistant *K. pneumoniae* isolate from another unidentified source.

## 5. Conclusions

This study is the first in Tunisia reporting the molecular mechanisms of colistin resistance in clinical *K. pneumoniae* isolates. It also shows that colistin-resistant *K. pneumoniae* isolates circulate at a high rate (24.1% of the carbapenem-resistant isolates) in Tahar Sfar University Hospital, a striking situation that most probably occurred in very recent years. This resistance was obviously selected by the use of colistin and was found in the currently predominant *K. pneumoniae* clones circulating in Tunisia, i.e. ST101 and ST147, including through an outbreak most probably spreading colistin resistance from patient to patient in the same hospital. The occurrence of colistin resistance in successful carbapenemase-producing *K. pneumoniae* lineages in this country is of major concern. In particular, NDM-1-producing ST147 *K. pneumoniae* emerged recently in Tunisia, and the acquisition of colistin resistance in such an isolate also having a MIC of 2  $\mu$ g/mL to tigecycline highlights the risk of pandrug-resistant *K. pneumoniae* in this setting. This is particularly worrying considering that last-resort molecules such as ceftazidime/avibactam would be useless against these colistin-resistant NDM-producers. Altogether, these data emphasise the need for systematic detection of colistin resistance in the hospital laboratory using reliable methods (including broth microdilution or polymyxin NP tests) in order to prevent the dissemination of such isolates. Prudent use of colistin in the treatment of carbapenem-resistant *K. pneumoniae* is also urgently required.

## Competing interests

None declared.

## Funding

This work was supported by the Agency for Food, Environmental and Occupational Health & Safety (ANSES). WM has received a fellowship from the Ministère de l'Enseignement Supérieur et de la Recherche Scientifique in Tunisia.

## Ethical approval

Not required.

## References

- Lee CR, Lee JH, Park KS, Kim YB, Jeong BC, Lee SH. Global dissemination of carbapenemase-producing *Klebsiella pneumoniae*: epidemiology, genetic context, treatment options, and detection methods. *Front Microbiol* 2016;7:895.
- Baron S, Hadjadj L, Rolain JM, Olaitan AO. Molecular mechanisms of polymyxin resistance: knowns and unknowns. *Int J Antimicrob Agents* 2016;48:583–91.
- Olaitan AO, Diene SM, Kempf M, Berrazeg M, Bakour S, Gupta SK, et al. Worldwide emergence of colistin resistance in *Klebsiella pneumoniae* from healthy humans and patients in Lao PDR, Thailand, Israel, Nigeria and France owing to inactivation of the PhoP/PhoQ regulator *mgrB*: an epidemiological and molecular study. *Int J Antimicrob Agents* 2014;44:500–7.
- Bogdanovich T, Adams-Haduch JM, Tian GB, Nguyen MH, Kwak EJ, Muto CA, et al. Colistin-resistant, *Klebsiella pneumoniae* carbapenemase (KPC)-producing *Klebsiella pneumoniae* belonging to the international epidemic clone ST258. *Clin Infect Dis* 2011;53:373–6.
- Schwarz S, Johnson AP. Transferable resistance to colistin: a new but old threat. *J Antimicrob Chemother* 2016;71:2066–70.
- Messaoudi A, Haenni M, Mansour W, Saras E, Bel Haj Khalifa A, Chaouch C, et al. ST147 NDM-1-producing *Klebsiella pneumoniae* spread in two Tunisian hospitals. *J Antimicrob Chemother* 2017;72:315–6.
- Poirel L, Potron A, Nordmann P. OXA-48-like carbapenemases: the phantom menace. *J Antimicrob Chemother* 2012;67:1597–606.
- Battikh H, Harchay C, Dekhili A, Khazar K, Kechrid F, Zribi M, et al. Clonal spread of colistin-resistant *Klebsiella pneumoniae* coproducing KPC and VIM carbapenemases in neonates at a Tunisian university hospital. *Microb Drug Resist* 2017;23:468–72.
- Ben Tanfous F, Alonso CA, Achour W, Ruiz-Ripa L, Torres C, Ben Hassen A. First description of KPC-2-producing *Escherichia coli* and ST15 OXA-48-positive *Klebsiella pneumoniae* in Tunisia. *Microb Drug Resist* 2017;23:365–75.
- Dallenne C, Da Costa A, Decré D, Favier C, Arlet G. Development of a set of multiplex PCR assays for the detection of genes encoding important  $\beta$ -lactamases in Enterobacteriaceae. *J Antimicrob Chemother* 2010;65:490–5.
- Poirel L, Héritier C, Tolün V, Nordmann P. Emergence of oxacillinase-mediated resistance to imipenem in *Klebsiella pneumoniae*. *Antimicrob Agents Chemother* 2004;48:15–22.
- Poirel L, Walsh TR, Cuvillier V, Nordmann P. Multiplex PCR for detection of acquired carbapenemase genes. *Diagn Microbiol Infect Dis* 2011;70:119–23.
- Poirel L, Jayol A, Bontron S, Villegas MV, Ozdamar M, Türkoglu S, et al. The *mgrB* gene as a key target for acquired resistance to colistin in *Klebsiella pneumoniae*. *J Antimicrob Chemother* 2015;70:75–80.
- Carattoli A, Bertini A, Villa L, Falbo V, Hopkins KL, Threlfall EJ. Identification of plasmids by PCR-based replicon typing. *J Microbiol Methods* 2005;63:219–28.
- Poirel L, Bonnin RA, Nordmann P. Genetic features of the widespread plasmid coding for the carbapenemase OXA-48. *Antimicrob Agents Chemother* 2012;56:559–62.
- Giani T, Conte V, Di Pilato V, Aschbacher R, Weber C, Larcher C, et al. *Escherichia coli* from Italy producing OXA-48 carbapenemase encoded by a novel Tn1999 transposon derivative. *Antimicrob Agents Chemother* 2012;56:2211–3.
- Potron A, Nordmann P, Rondinaud E, Jaureguy F, Poirel L. A mosaic transposon encoding OXA-48 and CTX-M-15: towards pan-resistance. *J Antimicrob Chemother* 2013;68:476–7.
- Potron A, Nordmann P, Poirel L. Characterization of OXA-204, a carbapenem-hydrolyzing class D  $\beta$ -lactamase from *Klebsiella pneumoniae*. *Antimicrob Agents Chemother* 2013;57:633–6.
- Diancourt L, Passet V, Verhoef J, Grimont PA, Brisse S. Multilocus sequence typing of *Klebsiella pneumoniae* nosocomial isolates. *J Clin Microbiol* 2005;43:4178–82.
- Tenover FC, Arbeit RD, Goering RV, Mickelsen PA, Murray BE, Persing DH, et al. Interpreting chromosomal DNA restriction patterns produced by pulsed-field gel electrophoresis: criteria for bacterial strain typing. *J Clin Microbiol* 1995;33:2233–9.
- Mansour W, Grami R, Ben Haj Khalifa A, Dahmen S, Châtre P, Haenni M, et al. Dissemination of multidrug-resistant *bla*<sub>CTX-M-15</sub>/*IncFIIk* plasmids in *Klebsiella pneumoniae* isolates from hospital- and community-acquired human infections in Tunisia. *Diagn Microbiol Infect Dis* 2015;83:298–304.
- Grami R, Mansour W, Mehri W, Bouallège O, Boujaâfar N, Madec JY, et al. Impact of food animal trade on the spread of *mcr-1*-mediated colistin resistance, Tunisia, July 2015. *Euro Surveill* 2016;21:30144.
- Charfi K, Mansour W, Khalifa AB, Mastouri M, Aouni M, Mammeri H. Emergence of OXA-204  $\beta$ -lactamase in Tunisia. *Diagn Microbiol Infect Dis* 2015;82:314–7.
- Ben Said L, Jouini A, Alonso CA, Klihi N, Dziri R, Boudabous A, et al. Characteristics of extended-spectrum  $\beta$ -lactamase (ESBL)- and pAmpC  $\beta$ -lactamase-producing Enterobacteriaceae of water samples in Tunisia. *Sci Total Environ* 2016;550:1103–9.
- Voulgari E, Zarkotou O, Ranellou K, Karageorgopoulos DE, Vrioni G, Mamali V, et al. Outbreak of OXA-48 carbapenemase-producing *Klebsiella pneumoniae* in Greece involving an ST11 clone. *J Antimicrob Chemother* 2013;68:84–8.
- Liapis E, Pantel A, Robert J, Nicolas-Chanoine MH, Cavalie L, van der Meer-Marquet N, et al. ONERBA. Molecular epidemiology of OXA-48-producing *Klebsiella pneumoniae* in France. *Clin Microbiol Infect* 2014;20:O1121–O1123.
- Potron A, Poirel L, Rondinaud E, Nordmann P. Intercontinental spread of OXA-48  $\beta$ -lactamase-producing Enterobacteriaceae over a 11-year period, 2001 to. *Euro Surveill* 2013;18: pii: 20549.
- Ouertani R, Limelette A, Guillard T, Brasme L, Jridi Y, Barguelli F, et al. First report of nosocomial infection caused by *Klebsiella pneumoniae* ST147 producing OXA-48 and VEB-8  $\beta$ -lactamases in Tunisia. *J Glob Antimicrob Resist* 2016;4:53–6.
- Oteo J, Hernández JM, Espasa M, Fleites A, Sáez D, Bautista V, et al. Emergence of OXA-48-producing *Klebsiella pneumoniae* and the novel carbapenemases OXA-244 and OXA-245 in Spain. *J Antimicrob Chemother* 2013;68:317–21.
- Rojas LJ, Wright MS, De La Cadena E, Mota G, Hujer KM, Villegas MV, et al. Initial assessment of the molecular epidemiology of *bla*<sub>NDM-1</sub> in Colombia. *Antimicrob Agents Chemother* 2016;60:4346–50.
- Yang J, Ye L, Guo L, Zhao Q, Chen R, Luo Y, et al. A nosocomial outbreak of KPC-2-producing *Klebsiella pneumoniae* in a Chinese hospital: dissemination of ST11 and emergence of ST37, ST392 and ST395. *Clin Microbiol Infect* 2013;19: E509–15.
- Czobor I, Novais Â, Rodrigues C, Chifiriu MC, Mihăescu G, Lazăr V, et al. Efficient transmission of IncFIIy and IncI plasmids and *Klebsiella pneumoniae* ST101 clone producing OXA-48, NDM-1 or OXA-181 in Bucharest hospitals. *Int J Antimicrob Agents* 2016;48:223–4.
- Jayol A, Poirel L, Dortet L, Nordmann P. National survey of colistin resistance among carbapenemase-producing Enterobacteriaceae and outbreak caused by colistin-resistant OXA-48-producing *Klebsiella pneumoniae*, France, 2014. *Euro Surveill* 2016;21: pii: <http://dx.doi.org/10.2807/1560-7917.ES.2016.21.37.30339>.
- Pena I, Picazo JJ, Rodríguez-Avial C, Rodríguez-Avial I. Carbapenemase-producing Enterobacteriaceae in a tertiary hospital in Madrid, Spain: high percentage of colistin resistance among VIM-1-producing *Klebsiella pneumoniae* ST11 isolates. *Int J Antimicrob Agents* 2014;43:460–4.
- Monaco M, Giani T, Raffone M, Arena F, Garcia-Fernandez A, Pollini S, et al. Network EuSCAPE-Italy. Colistin resistance superimposed to endemic carbapenem-resistant *Klebsiella pneumoniae*: a rapidly evolving problem in Italy, November 2013 to April 2014. *Euro Surveill* 2014;19: pii: 20939.
- Grami R, Mansour W, Ben Haj Khalifa A, Dahmen S, Châtre P, Haenni M, et al. Emergence of ST147 *Klebsiella pneumoniae* producing OXA-204 carbapenemase in a university hospital, Tunisia. *Microb Drug Resist* 2016;22:137–40.
- Kocsis B, Kádár B, Tóth A, Fullár A, Szabó D. MgrB variants in colistin-susceptible and colistin-resistant *Klebsiella pneumoniae* ST 258. *J Microbiol Immunol Infect* 2016, doi:<http://dx.doi.org/10.1016/j.jmii.2016.06.008> pii: S1684-1182(16)30071-8.
- Mavroidi A, Katsiari M, Likousi S, Palla E, Roussou Z, Nikolaou C, et al. Characterization of ST258 colistin-resistant, *bla*<sub>KPC</sub>-producing *Klebsiella pneumoniae* in a Greek Hospital. *Microb Drug Resist* 2016;22:392–8.
- Giani T, Arena F, Vaggelli G, Conte V, Chiarelli A, Henrici De Angelis L, et al. Large nosocomial outbreak of colistin-resistant, carbapenemase-producing *Klebsiella pneumoniae* traced to clonal expansion of an *mgrB* deletion mutant. *J Clin Microbiol* 2015;53:3341–4.