



High Prevalence of the Animal-Associated bla CTX-M-1 IncI1/ST3 Plasmid in Human Escherichia coli Isolates

Jean-Yves Madec, Marisa Haenni, Véronique Métayer, Estelle Saras,
Marie-Hélène Nicolas-Chanoine

► To cite this version:

Jean-Yves Madec, Marisa Haenni, Véronique Métayer, Estelle Saras, Marie-Hélène Nicolas-Chanoine. High Prevalence of the Animal-Associated bla CTX-M-1 IncI1/ST3 Plasmid in Human Escherichia coli Isolates. Antimicrobial Agents and Chemotherapy, 2015, 59 (9), pp.5860-5861. 10.1128/AAC.00819-15 . anses-04018297

HAL Id: anses-04018297

<https://anses.hal.science/anses-04018297>

Submitted on 7 Mar 2023

HAL is a multi-disciplinary open access archive for the deposit and dissemination of scientific research documents, whether they are published or not. The documents may come from teaching and research institutions in France or abroad, or from public or private research centers.

L'archive ouverte pluridisciplinaire **HAL**, est destinée au dépôt et à la diffusion de documents scientifiques de niveau recherche, publiés ou non, émanant des établissements d'enseignement et de recherche français ou étrangers, des laboratoires publics ou privés.

High Prevalence of the Animal-Associated *bla*_{CTX-M-1} IncI1/ST3 Plasmid in Human *Escherichia coli* Isolates

Jean-Yves Madec,^a Marisa Haenni,^a Véronique Métayer,^a Estelle Saras,^a Marie-Hélène Nicolas-Chanoine^{b,c,d}

Unité Antibiorésistance et Virulence Bactériennes, ANSES Site de Lyon, Lyon, France^a; Hôpital Beaujon, AP-HP, Clichy, France^b; Faculté de Médecine D. Diderot, Université Paris VII, Paris, France^c; INSERM UMR 1149, Université Paris VII, Paris, France^d

In humans and animals, extended-spectrum beta-lactamases (ESBLs) are widespread enzymes conferring resistance to broad-spectrum cephalosporins. Consumption of ESBL-contaminated foodstuffs or contacts with ESBL-colonized/infected animals enhance the risk of human spread of ESBL genes from nonhuman sources. Moreover, ESBL genes are mostly located on plasmids of various incompatibility (Inc) groups and subtypes, which play a key role in their horizontal transfer (1).

In animals, *bla*_{CTX-M-1} is the most common ESBL gene reported so far. It is broadly disseminated on several plasmids, among which IncI1/ST3 was repeatedly identified from companion and food animals and foodstuffs (2–6). In humans, the dominant ESBL genes are *bla*_{CTX-M-15} and *bla*_{CTX-M-14}. However, recent studies showed that the prevalence of CTX-M-1 producers in humans in France was high. Indeed, CTX-M-1 *Escherichia coli* accounted for 26% of all ESBL producers colonizing children (7) and 24% of clinical ESBL producers in hospitals (8). The prevalence of CTX-M-1 was also equal to that of CTX-M-15 among ESBL *E. coli* isolates from healthy adults in Paris (9). In parallel, whole-genome sequencing recently suggested the efficient spread of highly similar *bla*_{CTX-M-1} IncI1/ST3 plasmids in humans and animals (10). Accordingly, our aim was to characterize *bla*_{CTX-M-1}-carrying plasmids from various human sources to investigate their potential commonalities with those of animal origin.

Our study focused on 48 unrelated human CTX-M-1 *E. coli* isolates obtained from three independent published studies. This collection included (i) clinical CTX-M-1 *E. coli* isolates ($n = 35$) from hospitalized patients (network of 38 hospitals of Assistance Publique/Hôpitaux Paris, 23,000 beds, November 2008 to June 2009) (8) and (ii) nonclinical (carriage) CTX-M-1 *E. coli* isolates ($n = 13$), either from children attending day care centers (DCCs) in southern France ($n = 7$, January to April 2012) (7) or from adults living in the Paris area ($n = 6$, mid-February to mid-March 2011) (9).

Plasmids carrying the *bla*_{CTX-M-1} gene were transferred by conjugation to *E. coli* rifampin-resistant K-12 J53 recipient strains selected on Mueller-Hinton agar with rifampin (250 µg/ml) and cefotaxime (4 µg/ml). Plasmids were further characterized using

S1 nuclease-treated DNA followed by pulsed-field gel electrophoresis (S1-PFGE), PCR-based replicon typing, restriction fragment length polymorphism (RFLP) analysis, plasmid multilocus sequence typing (pMLST), and Southern blot hybridizations with the *bla*_{CTX-M-1} gene and IncI1-specific digoxigenin (DIG)-labeled probes (Roche Applied Science, Mannheim, Germany).

Among the 48 *E. coli* isolates, 40 (83.3%) carried the *bla*_{CTX-M-1} gene on an IncI1 plasmid; among the latter, 32/40 (80%) were IncI1/ST3 (Table 1). IncI1/ST3 was dominant in both diseased (21/35, 60%) and healthy (11/13, 85%) humans and was similarly distributed among children (6/7, 85%) and adults (5/6, 83%). Closely related restriction profiles were obtained for those *bla*_{CTX-M-1} IncI1/ST3 plasmids, whatever their human origin (Fig. 1). For comparison purposes, *bla*_{CTX-M-1} IncI1/ST3 plasmids isolated from dogs originating in Paris (different animals and *E. coli* clones) were included (4) and also showed related RFLP patterns (Fig. 1). Besides, five IncI1 plasmids belonged to ST7, one to ST35, and one to ST157 (2/18/4/1/2, closely related to ST3), and one was untypeable.

Such a dominance of a single IncI1 plasmid subtype (IncI1/ST3) spreading *bla*_{CTX-M-1} in humans was never previously reported and is surprising with regard to the diversity of contexts studied (children/adults, infection/colonization, different geographical origins and time periods). As determined in the original studies (7, 8, 9), the vast majority of the human *E. coli* isolates were of different lineages and/or PFGE types, which indicates that these results do not reflect the clonal spread of a particular strain. Considering the abundance of

Accepted manuscript posted online 29 June 2015

Citation Madec J-Y, Haenni M, Métayer V, Saras E, Nicolas-Chanoine M-H. 2015. High prevalence of the animal-associated *bla*_{CTX-M-1} IncI1/ST3 plasmid in human *Escherichia coli* isolates. Antimicrob Agents Chemother 59:5860–5861. doi:10.1128/AAC.00819-15.

Address correspondence to Jean-Yves Madec, jean-yves.madec@anses.fr.

Copyright © 2015, American Society for Microbiology. All Rights Reserved.

doi:10.1128/AAC.00819-15

TABLE 1 Plasmid types and subtypes carried by the 48 *E. coli* isolates included in the study

Isolate source	Study reference	No. of <i>bla</i> _{CTX-M-1} -carrying plasmids ($n = 48$)						
		IncI1					IncF	NT ^a
		ST3	ST7	ST35	ST157	NT ^a		
Clinical cases ($n = 35$)	8	21	5	0	0	1	1	7
Healthy day care center children ($n = 7$)	7	6	0	1	0	0	0	0
Healthy adults ($n = 6$)	9	5	0	0	1	0	0	0
Total ($n = 48$)		32	5	1	1	1	1	7

^a NT, not typeable.

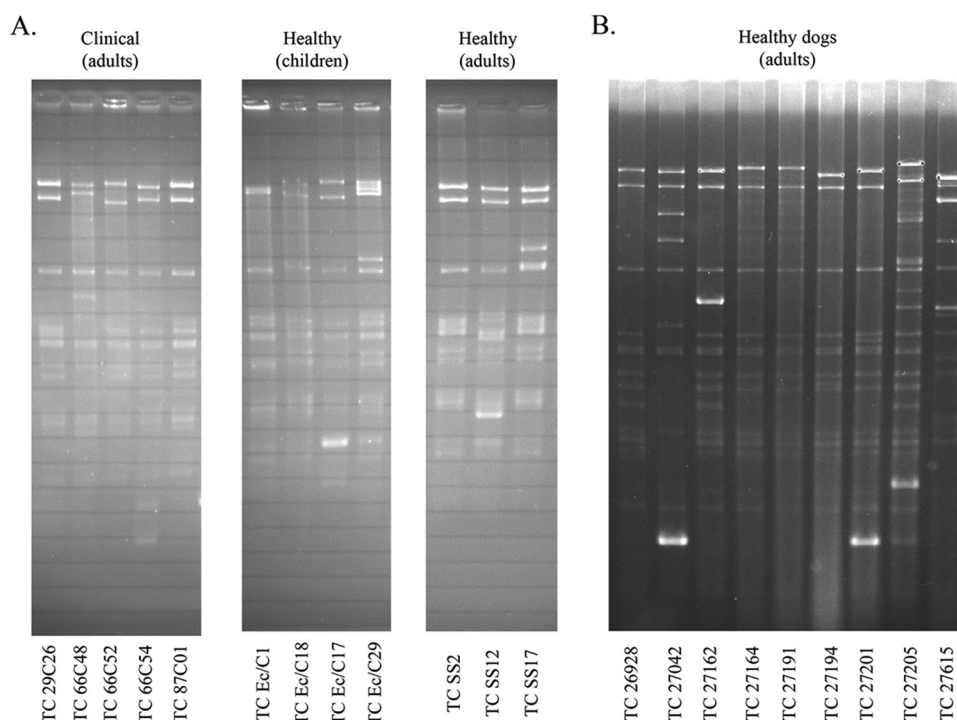


FIG 1 Restriction fragment length polymorphism (RFLP) analysis of transconjugants of *E. coli* (TC-*E. coli*) plasmid DNA digested with EcoRI. TC-*E. coli* plasmid originated from humans (A) or dogs (B). Isolate numbers correspond to the original numbers given in references 4, 7, 8, and 9.

*bla*_{CTX-M-1} IncI1/ST3 in animals, together with that of the new *bla*_{CTX-M-1} IncI1/ST157 plasmid (close to *bla*_{CTX-M-1} IncI1/ST3) reported here and of the 5 *bla*_{CTX-M-1} IncI1/ST7 plasmids also previously recognized in humans and poultry (11), these data might suggest an animal contribution to the CTX-M-1 reservoir in humans through the spread of specific plasmids, such as IncI1/ST3. Beside food animals, which are often proposed as a possible source for such transfers (5, 10), our results also raise questions with respect to the contribution of companion animals to this burden.

ACKNOWLEDGMENTS

We thank Alessandra Carattoli for assigning the new ST157 pMLST sequence type.

This work was supported by the Agency for Food, Environmental and Occupational Health & Safety (ANSES).

We declare that we have no conflicts of interest.

REFERENCES

- Carattoli A. 2011. Plasmids in Gram negatives: molecular typing of resistance plasmids. *Int J Med Microbiol* 301:654–658. <http://dx.doi.org/10.1016/j.ijmm.2011.09.003>.
- Dahmen S, Haenni M, Madec JY. 2012. IncI1/ST3 plasmids contribute to the dissemination of the *bla*_{CTX-M-1} gene in *Escherichia coli* from several animal species in France. *J Antimicrob Chemother* 67:3011–3012. <http://dx.doi.org/10.1093/jac/dks308>.
- Grami R, Mansour W, Dahmen S, Mehri W, Haenni M, Aouni M, Madec JY. 2013. The *bla*_{CTX-M-1} IncI1/ST3 plasmid is dominant in chickens and pets in Tunisia. *J Antimicrob Chemother* 68:2950–2952. <http://dx.doi.org/10.1093/jac/dkt258>.
- Haenni M, Saras E, Metayer V, Medaille C, Madec JY. 2014. High prevalence of *bla*_{CTX-M-1}/IncI1/ST3 and *bla*_{CMY-2}/IncI1/ST2 plasmids in healthy urban dogs in France. *Antimicrob Agents Chemother* 58:5358–5362. <http://dx.doi.org/10.1128/AAC.02545-14>.
- Zurfluh K, Wang J, Klumpp J, Nuesch-Inderbinen M, Fanning S, Stephan R. 2014. Vertical transmission of highly similar *bla*_{CTX-M-1} harboring IncI1 plasmids in *Escherichia coli* with different MLST types in the poultry production pyramid. *Front Microbiol* 5:519.
- Vogt D, Overesch G, Endimiani A, Collaud A, Thomann A, Perreten V. 2014. Occurrence and genetic characteristics of third-generation cephalosporin-resistant *Escherichia coli* in Swiss retail meat. *Microb Drug Resist* 20:485–494. <http://dx.doi.org/10.1089/mdr.2013.0210>.
- Blanc V, Leflon-Guibout V, Blanco J, Haenni M, Madec JY, Ragnon G, Bruno P, Mora A, Lopez C, Dahbi G, Dunais B, Anastay M, Branger C, Moreau R, Pradier C, Nicolas-Chanoine MH. 2014. Prevalence of day-care centre children (France) with faecal CTX-M-producing *Escherichia coli* comprising O25b:H4 and O16:H5 ST131 strains. *J Antimicrob Chemother* 69:1231–1237. <http://dx.doi.org/10.1093/jac/dkt519>.
- Nicolas-Chanoine MH, Jarlier V, Robert J, Arlet G, Drieux L, Leflon-Guibout V, Laouenan C, Larroque B, Caro V, Mentre F, Group Coliβ. 2012. Patient's origin and lifestyle associated with CTX-M-producing *Escherichia coli*: a case-control-control study. *PLoS One* 7:e30498. <http://dx.doi.org/10.1371/journal.pone.0030498>.
- Nicolas-Chanoine MH, Gruson C, Bialek-Davenet S, Bertrand X, Thomas-Jean F, Bert F, Moyat M, Meiller E, Marcon E, Danchin N, Noussair L, Moreau R, Leflon-Guibout V. 2013. 10-Fold increase (2006–11) in the rate of healthy subjects with extended-spectrum beta-lactamase-producing *Escherichia coli* faecal carriage in a Parisian check-up centre. *J Antimicrob Chemother* 68:562–568. <http://dx.doi.org/10.1093/jac/dks429>.
- de Been M, Lanza VF, de Toro M, Scharringa J, Dohmen W, Du Y, Hu J, Lei Y, Li N, Tooming-Klunderud A, Heederik DJ, Fluit AC, Bonten MJ, Willems RJ, de la Cruz F, van Schaik W. 2014. Dissemination of cephalosporin resistance genes between *Escherichia coli* strains from farm animals and humans by specific plasmid lineages. *PLoS Genet* 10:e1004776. <http://dx.doi.org/10.1371/journal.pgen.1004776>.
- Leverstein-van Hall MA, Dierikx CM, Cohen Stuart J, Voets GM, van den Munckhof MP, van Essen-Zandbergen A, Platteel T, Fluit AC, van de Sande-Bruinsma N, Scharinga J, Bonten MJ, Mevius DJ. 2011. Dutch patients, retail chicken meat and poultry share the same ESBL genes, plasmids and strains. *Clin Microbiol Infect* 17:873–880. <http://dx.doi.org/10.1111/j.1469-0691.2011.03497.x>.