



HAL
open science

Development of a primary cell model derived from porcine dorsal soft palate for foot-and-mouth disease virus research and diagnosis.

Morgan Sarry, Cindy Bernelin-Cottet, Caroline Michaud, Anthony Relmy, Aurore Romey, Anne-Laure Salomez, H el ene Huet, Gr egory Jouvion, Sara H agglund, Jean-Fran ois Valarcher, et al.

► To cite this version:

Morgan Sarry, Cindy Bernelin-Cottet, Caroline Michaud, Anthony Relmy, Aurore Romey, et al.. Development of a primary cell model derived from porcine dorsal soft palate for foot-and-mouth disease virus research and diagnosis.. Global Foot-and-Mouth (F M D) Research Alliance (G F R A), Nov 2023, Kampala, Uganda. . anses-04425022

HAL Id: anses-04425022

<https://anses.hal.science/anses-04425022>

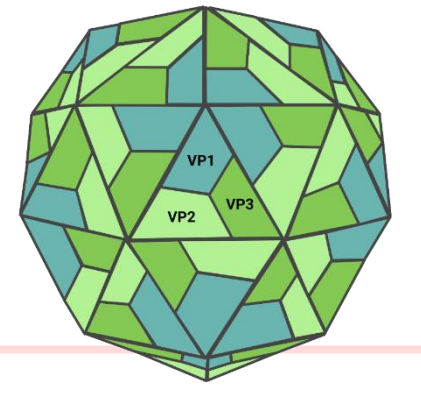
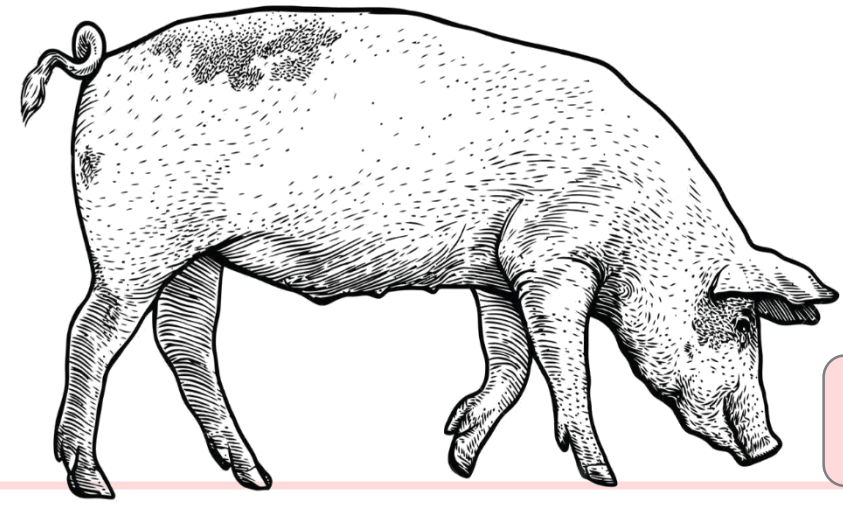
Submitted on 29 Jan 2024

HAL is a multi-disciplinary open access archive for the deposit and dissemination of scientific research documents, whether they are published or not. The documents may come from teaching and research institutions in France or abroad, or from public or private research centers.

L'archive ouverte pluridisciplinaire **HAL**, est destin ee au d ep ot et  a la diffusion de documents scientifiques de niveau recherche, publi es ou non,  emanant des  tablissements d'enseignement et de recherche fran ais ou  trangers, des laboratoires publics ou priv es.



Distributed under a Creative Commons Attribution - NonCommercial - NoDerivatives 4.0 International License



INTRODUCTION & OBJECTIVES

- Foot-and-mouth disease is a highly contagious disease affecting wild and domestic artiodactyls, caused by a Picornavirus named Foot-and-mouth disease virus (FMDV).
- FMDV is able to persist (i.e. infectious virus detected after 28 days post-infection (dpi)) for several years in the pharyngeal epithelium of ruminants after resolution of clinical signs¹. However, this is not the case in pigs where only viral RNA could be detected in vivo for more than 60 dpi in the oropharyngeal tonsils and dorsal soft palate^{2,3}.
- No porcine cell model from a tissue of interest is currently available.

➤ **Aim of the study:** To develop a specific cellular model to study FMDV infection in porcine cells.

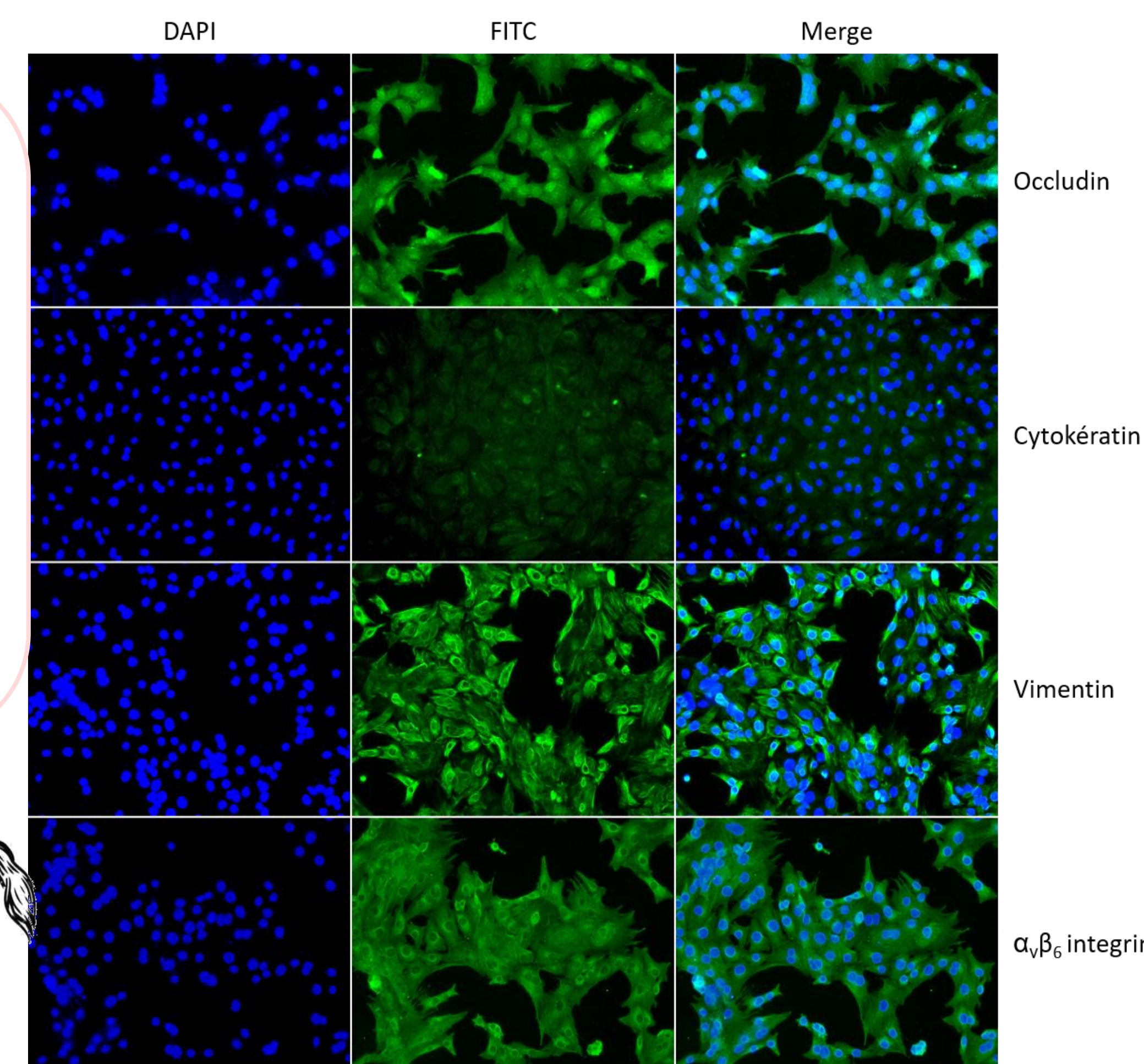
Workflow

- Swine oropharyngeal tonsils and dorsal soft palate (DSP) were sampled.
- Epithelial structures were identified and isolated ①.
- Epithelial cells derived from DSP were propagated in monolayers, characterized ②, then infected with FMDV ③.
- Epithelial cells were then grown in multilayers at the air-liquid interphase to mimic a pluristratified epithelium ④.

② DSP cells characterization

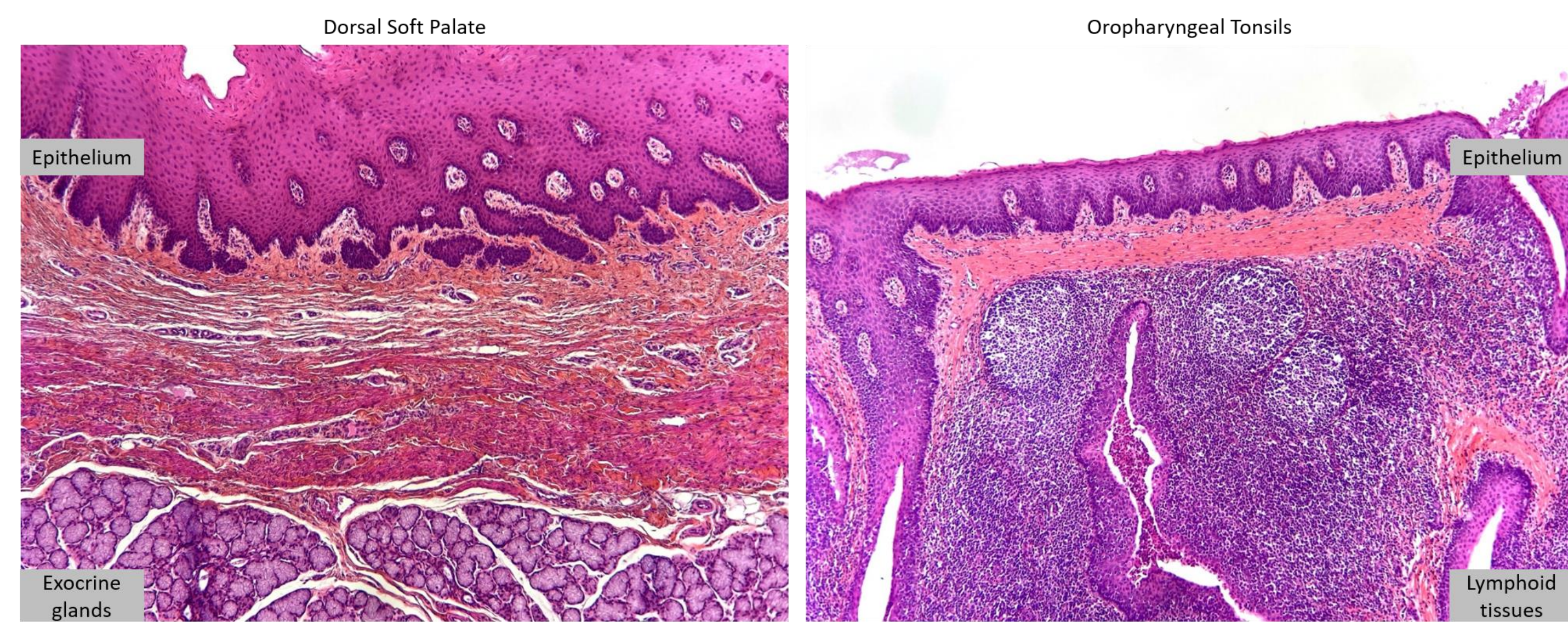
- DSP cells were cultured in monolayers, fixed, then labelled with antibodies targeting epithelial markers (occludin, cyokeratin), fibroblastic markers (vimentin) and FMDV receptor ($\alpha_v\beta_6$ integrin).

- Significant expression of occludin was detected, indicating an epithelial nature.
- Greater expression of vimentin than cyokeratin was detected, indicating an epithelial-mesenchymal transition.
- High expression of the major receptor for FMDV was detected.



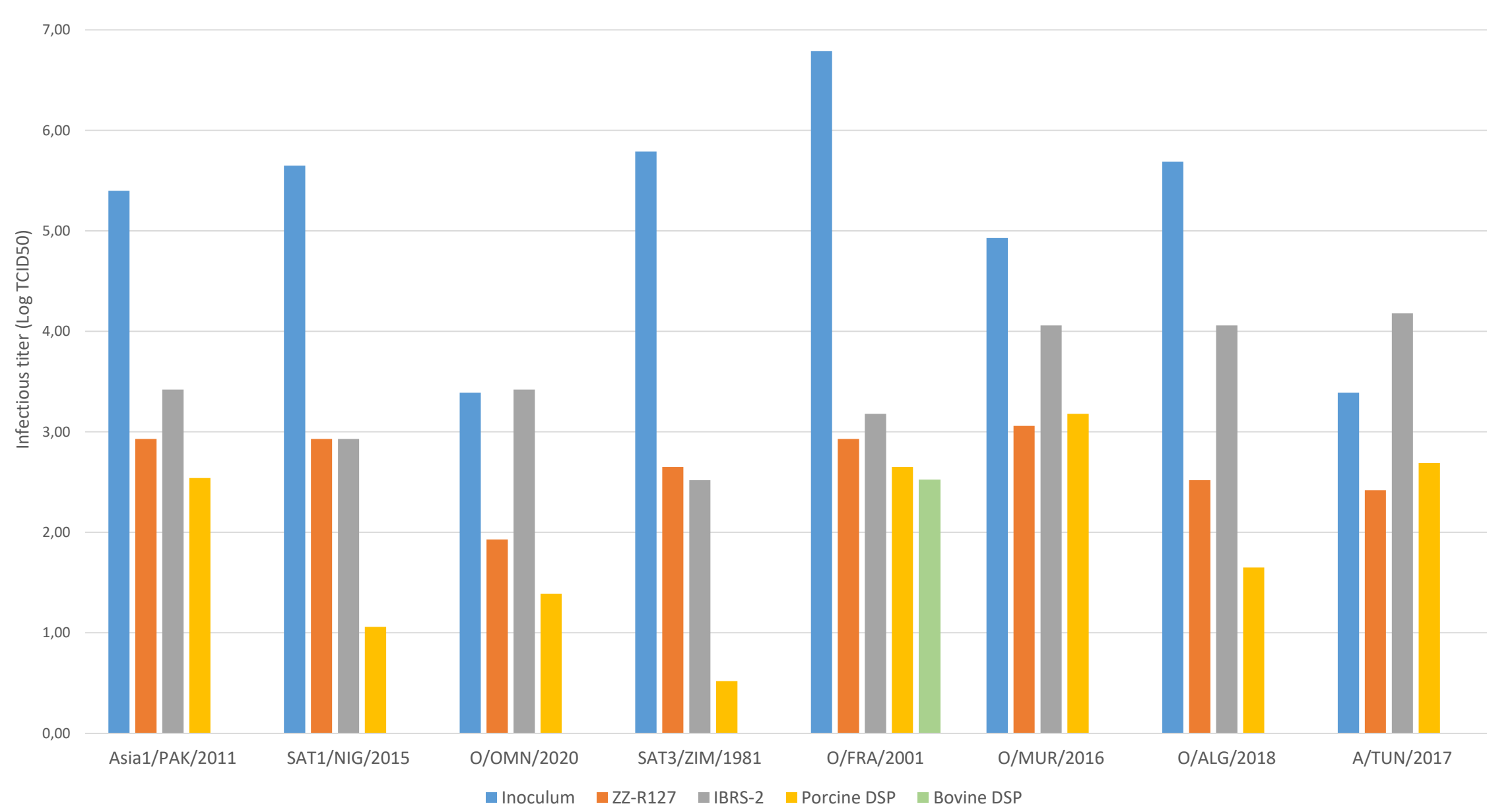
① Epithelial structures characterization

- Oropharyngeal tonsils and DSP samples were stained using HES (hematoxylin-eosin-saffron) in order to localize epithelial structures.
- Epithelium were identified in both oropharyngeal tonsils and DSP samples



③ Assessment of DSP susceptibility to FMDV infection

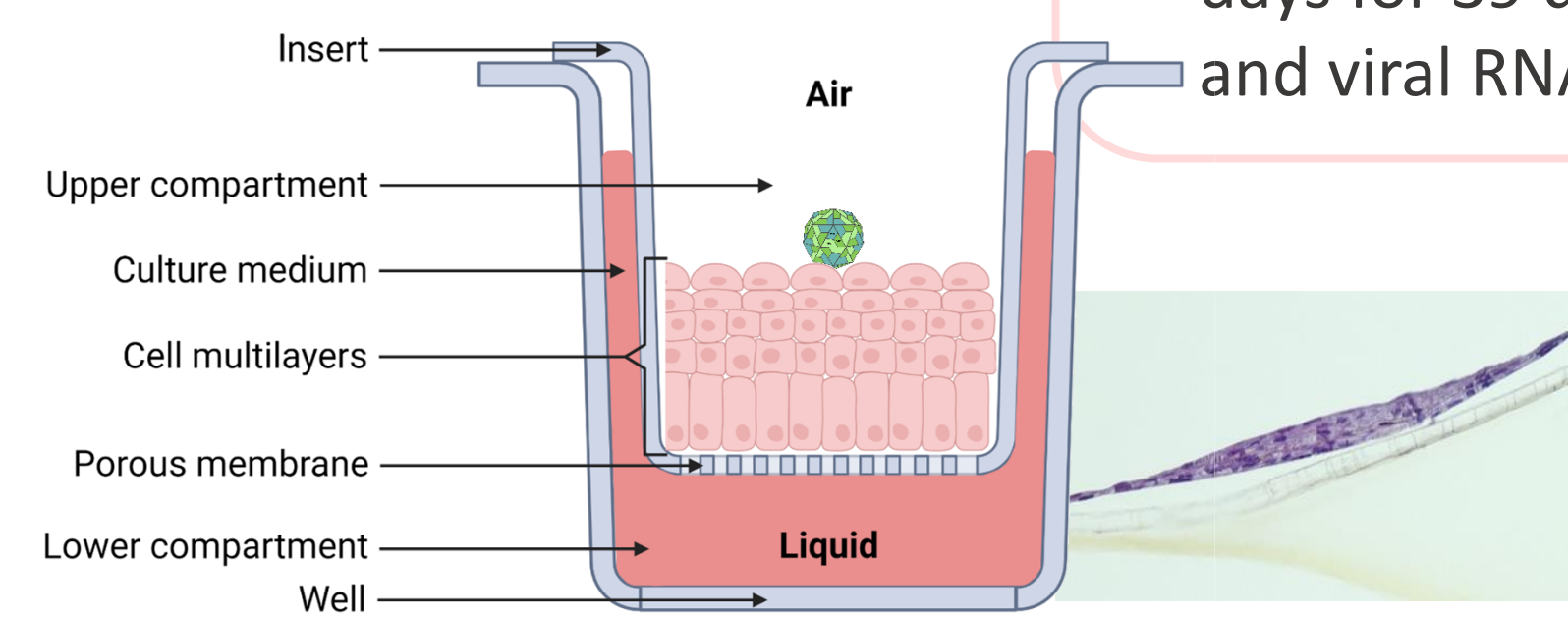
- DSP cells were infected with a panel of FMDV strains in order to compare their susceptibility to other cell lines : ZZ-R127, IBRS-2 and bovine DSP.
- Culture supernatants were collected 48 hpi in order to perform viral titration on BHK-21 cells.



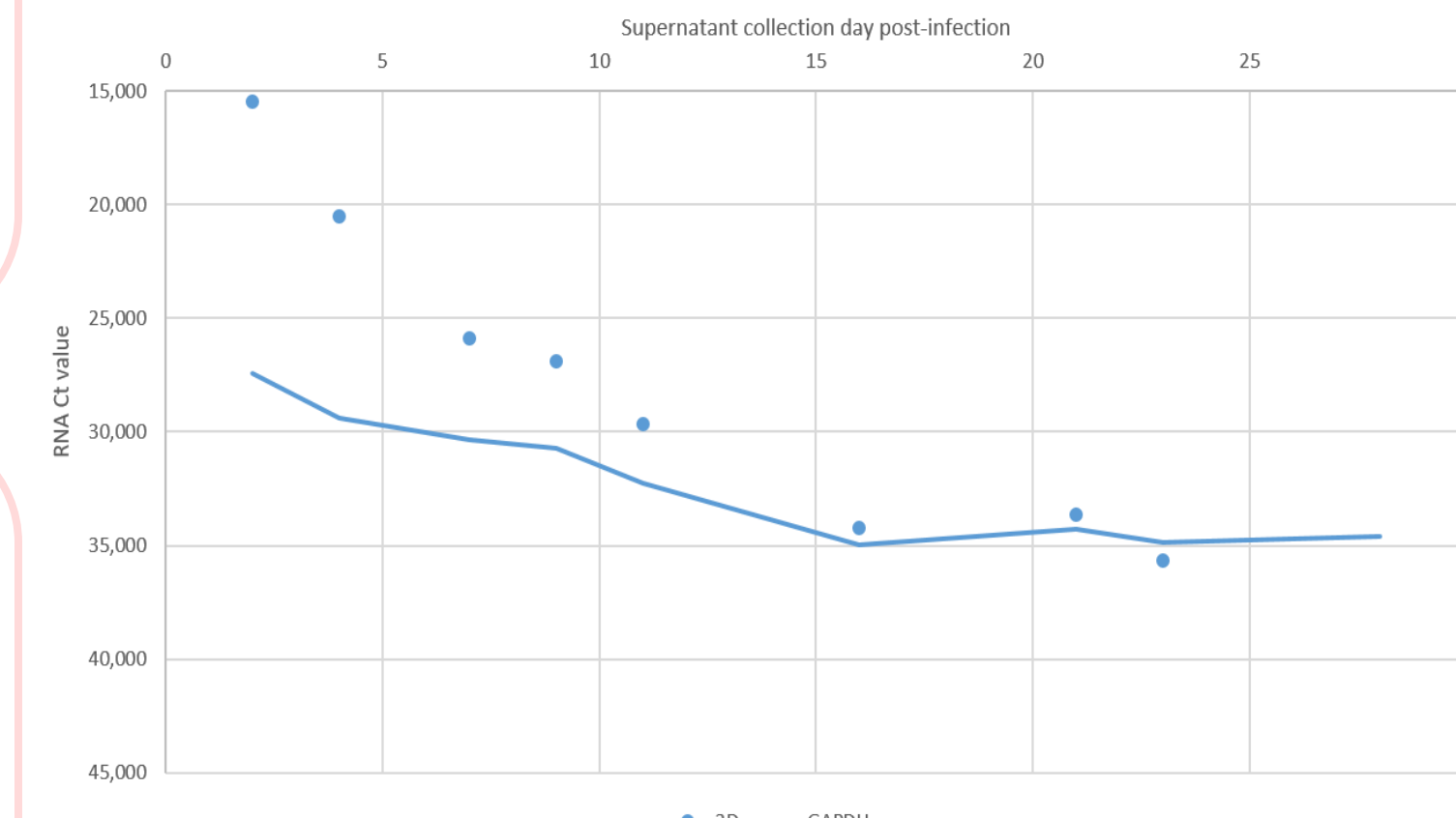
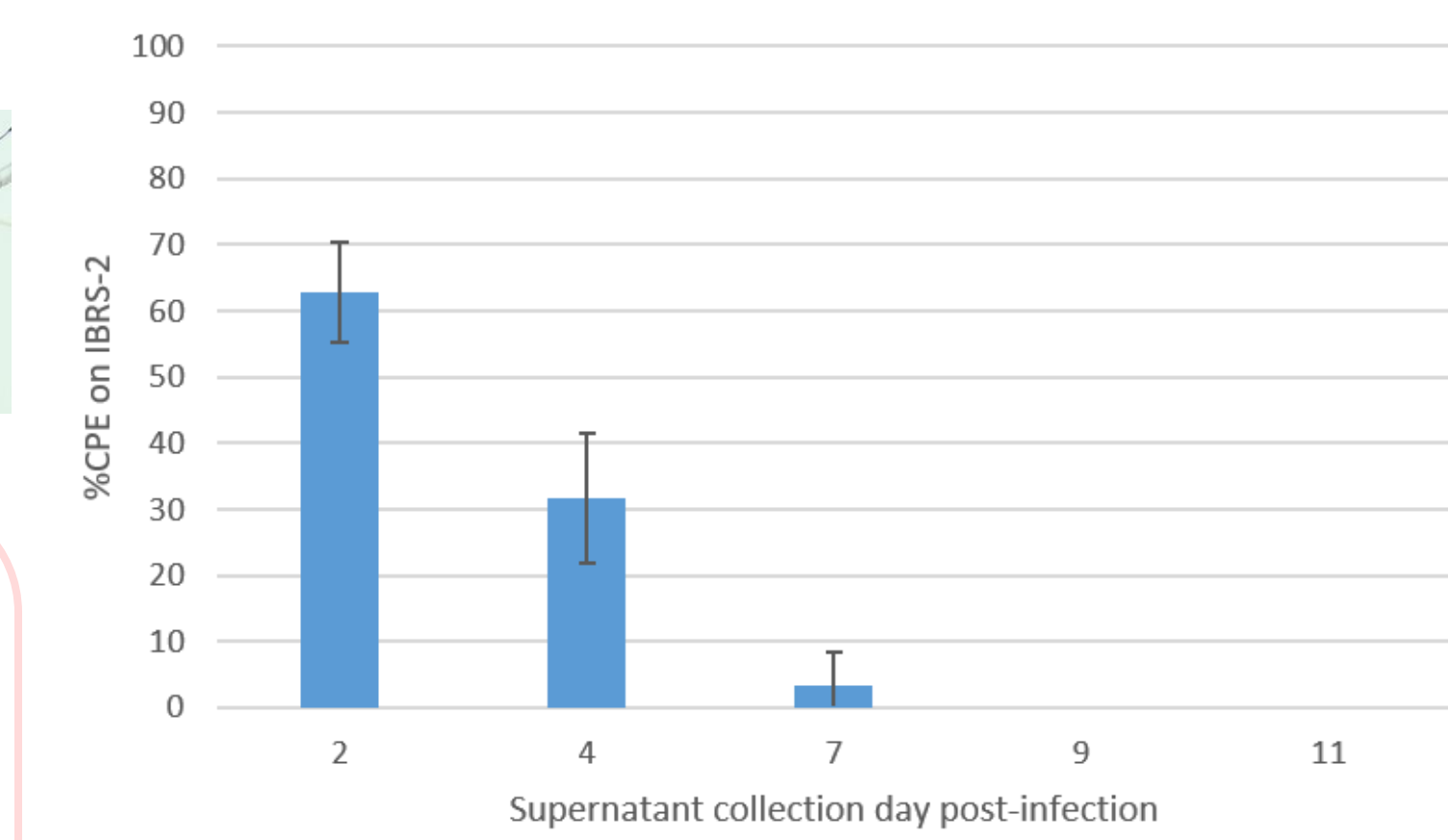
- Porcine DSP were susceptible to the eight strains tested.
- Cytopathic effect on porcine DSP were easy to observe for all the strains.
- Porcine DSP susceptibility to certain strains, in particular from SAT1 and SAT3 serotypes, was lower than that of the cells currently used.

④ Infection of DSP multilayers

- DSP cells were grown in multilayers, on collagen membrane, at the air-liquid interface and then infected with a type-O FMDV at MOI 1.
- Culture supernatants were collected every two or three days for 39 dpi and analyzed for infectious virus, antigen and viral RNA.



- Multilayer depth was determined using HES staining.
- Infectious virus were detected by virus isolation up to 7 dpi in culture supernatants.
- Viral antigen were detected up to 9 dpi by immunofluorescence.
- Viral RNA were detected up to 23 dpi by RTqPCR.



Conclusion & perspectives

- We have succeeded in developing a primary porcine dorsal soft palate cell model susceptible to FMDV and other vesicular disease viruses infection.
- A similar model based on oropharyngeal tonsil cells, could not be developed since these cells did not maintain in culture.
- Consistent with what has been observed in vivo in pigs, no evidence of FMDV persistence could be detected in our cell model (no infectious virus detected after 28 dpi).

- Porcine DSP cells could be immortalized to obtain a cell line suitable for FMDV research and diagnosis.
- These cells could constitute a privileged tool in the differential diagnosis of FMDV.

References

1. Stenfeldt C, Arzt J. The Carrier Conundrum; A Review of Recent Advances and Persistent Gaps Regarding the Carrier State of Foot-and-Mouth Disease Virus. Pathogens [Internet]. 28 F vr 2020 [cit  30 sept 2020];9(3).
 2. Stenfeldt C, Pacheco JM, Rodriguez LL, Arzt J. Early Events in the Pathogenesis of Foot-and-Mouth Disease in Pigs; Identification of Oropharyngeal Tonsils as Sites of Primary and Sustained Viral Replication. PLoS One [Internet]. 3 sept 2014 [cit  18 janv 2021];9(9). Disponible sur: <https://www.ncbi.nlm.nih.gov/pmc/articles/PMC4153717/>
 3. Stenfeldt C, Pacheco JM, Smoliga GR, Bishop E, Pauszek SJ, Hartwig EJ, et al. Detection of Foot-and-mouth Disease Virus RNA and Capsid Protein in Lymphoid Tissues of Convalescent Pigs Does Not Indicate Existence of a Carrier State. Transboundary and Emerging Diseases. 2016;63(2):152-64.

