



**HAL**  
open science

## Development of a primary cell model derived from porcine dorsal soft palate for foot-and-mouth disease virus research and diagnosis

Morgan Sarry, Cindy Bernelin Cottet, Caroline Michaud, Anthony Relmy, Aurore Romey, Anne-Laure Salomez, H el ene Huet, Gr egory Jouvion, Sara H agglund, Jean Fran ois Valarcher, et al.

### ► To cite this version:

Morgan Sarry, Cindy Bernelin Cottet, Caroline Michaud, Anthony Relmy, Aurore Romey, et al.. Development of a primary cell model derived from porcine dorsal soft palate for foot-and-mouth disease virus research and diagnosis. Epizone, 15th annual meeting 2023, Apr 2023, Novi Sad, Serbia. anses-04426176

**HAL Id: anses-04426176**

**<https://anses.hal.science/anses-04426176>**

Submitted on 30 Jan 2024

**HAL** is a multi-disciplinary open access archive for the deposit and dissemination of scientific research documents, whether they are published or not. The documents may come from teaching and research institutions in France or abroad, or from public or private research centers.

L'archive ouverte pluridisciplinaire **HAL**, est destin ee au d ep ot et  a la diffusion de documents scientifiques de niveau recherche, publi es ou non,  emanant des  tablissements d'enseignement et de recherche fran ais ou  trangers, des laboratoires publics ou priv es.



Distributed under a Creative Commons Attribution - NonCommercial - NoDerivatives 4.0 International License

Morgan Sarry<sup>1,2</sup>, Cindy Bernelin-Cottet<sup>1</sup>, Caroline Michaud<sup>1</sup>, Anthony Relmy<sup>1</sup>, Aurore Romey<sup>1</sup>, Anne-Laure Salomez<sup>1</sup>, H el ene Huet<sup>1</sup>, Gregory Jouvion<sup>3</sup>, Sara H aggglund<sup>4</sup>, Jean-Fran ois Valarcher<sup>4</sup>, Labib Bakkali Kassimi<sup>1</sup> and Sandra Blaise-Boisseau<sup>1</sup>

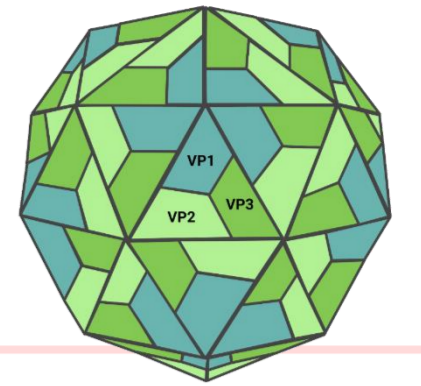
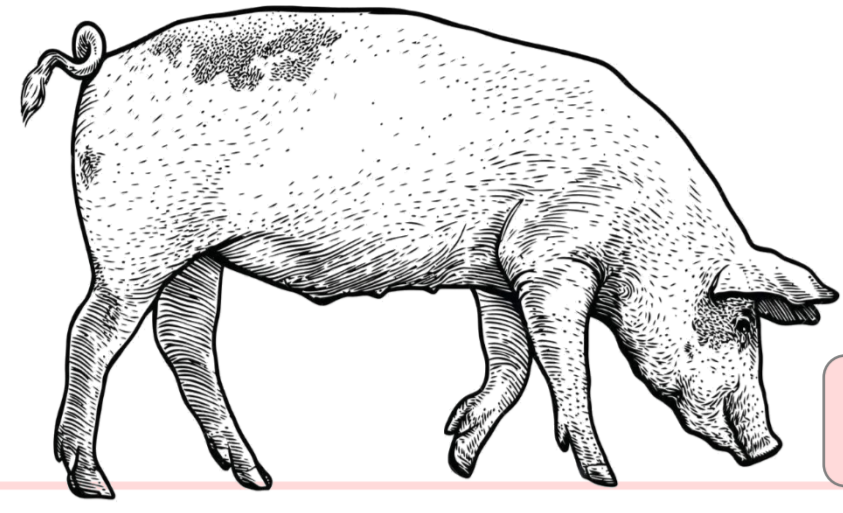
<sup>1</sup> UMR VIROLOGIE, INRAE,  cole Nationale V t rinaire d'Alfort, ANSES Laboratoire de Sant  Animale, Universit  Paris-Est, 94700 Maisons-Alfort, France

<sup>2</sup> Ecole doctorale ABIES – AgroParisTech – 16 Rue Claude Bernard, 75005 Paris, France

<sup>3</sup> Unit  d'Histologie et d'Anatomie pathologique, Ecole Nationale V t rinaire d'Alfort, 7 avenue du G n ral de Gaulle, 94700, Maisons-Alfort, France

<sup>4</sup> Host Pathogen Interaction Group, Section of Ruminant Medicine, Department of Clinical Science, Swedish University of Agricultural Sciences (SLU), Uppsala, Sweden

Correspondance : morgan.sarry@anses.fr



## INTRODUCTION & OBJECTIVES

- Foot-and-mouth disease is a highly contagious disease affecting wild and domestic artiodactyls, caused by a Picornavirus named Foot-and-mouth disease virus (FMDV).
- FMDV is able to persist (i.e. infectious virus detected after 28 days post-infection (dpi)) for several years in the pharyngeal epithelium of ruminants after resolution of clinical signs<sup>1</sup>. However, this is not the case in pigs where only viral RNA could be detected in vivo for more than 60 dpi in the oropharyngeal tonsils and dorsal soft palate<sup>2,3</sup>.
- No porcine cell model from a tissue of interest is currently available.

**Aim of the study:** To develop a specific cellular model to study FMDV infection in porcine cells.

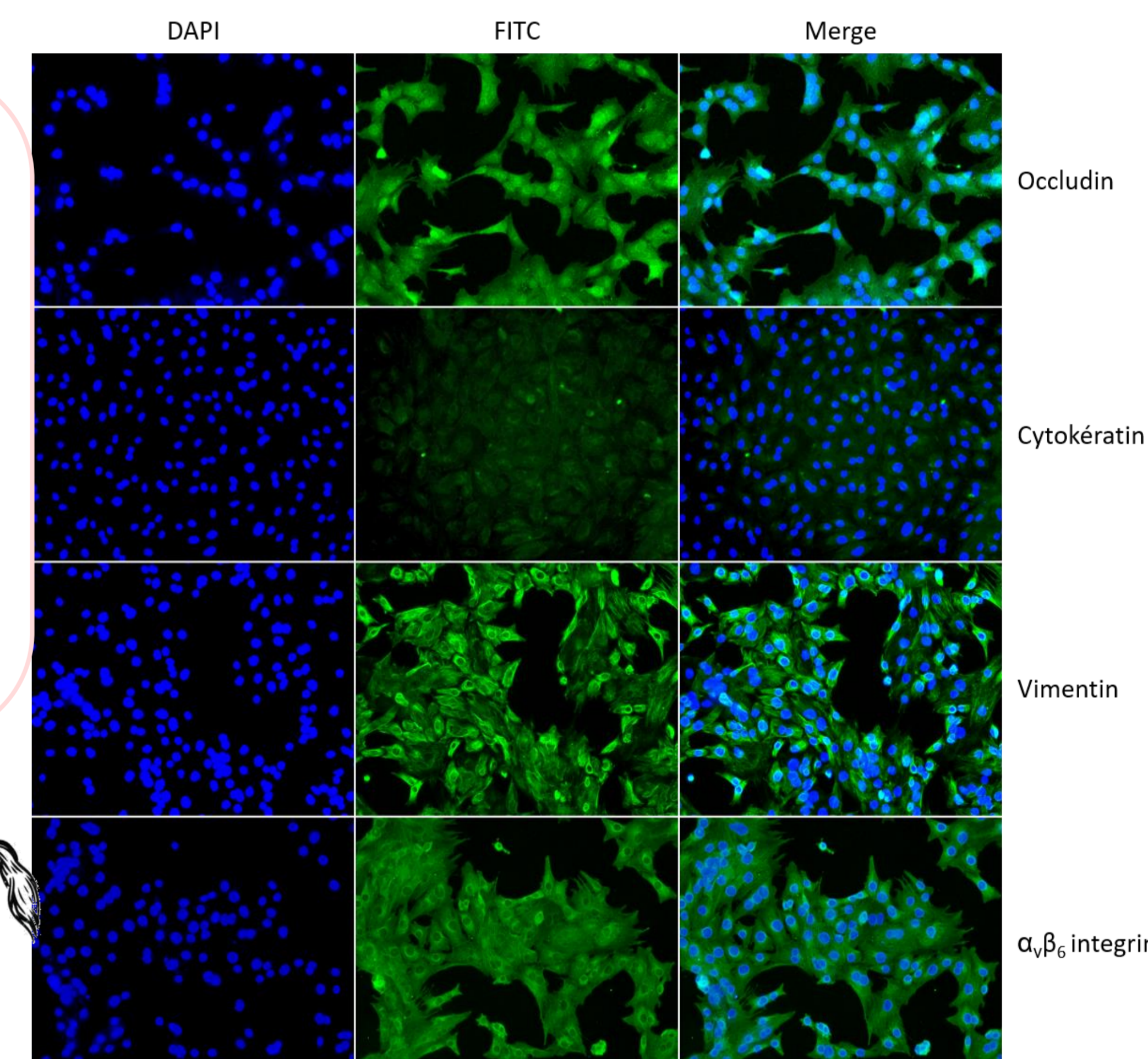
## Workflow

- Swine oropharyngeal tonsils and dorsal soft palate (DSP) were sampled.
- Epithelial structures were identified and isolated ①.
- Epithelial cells derived from DSP were propagated in monolayers, characterized ②, then infected with FMDV ③.
- Epithelial cells were then grown in multilayers at the air-liquid interphase to mimic a pluristratified epithelium ④.

## ② DSP cells characterization

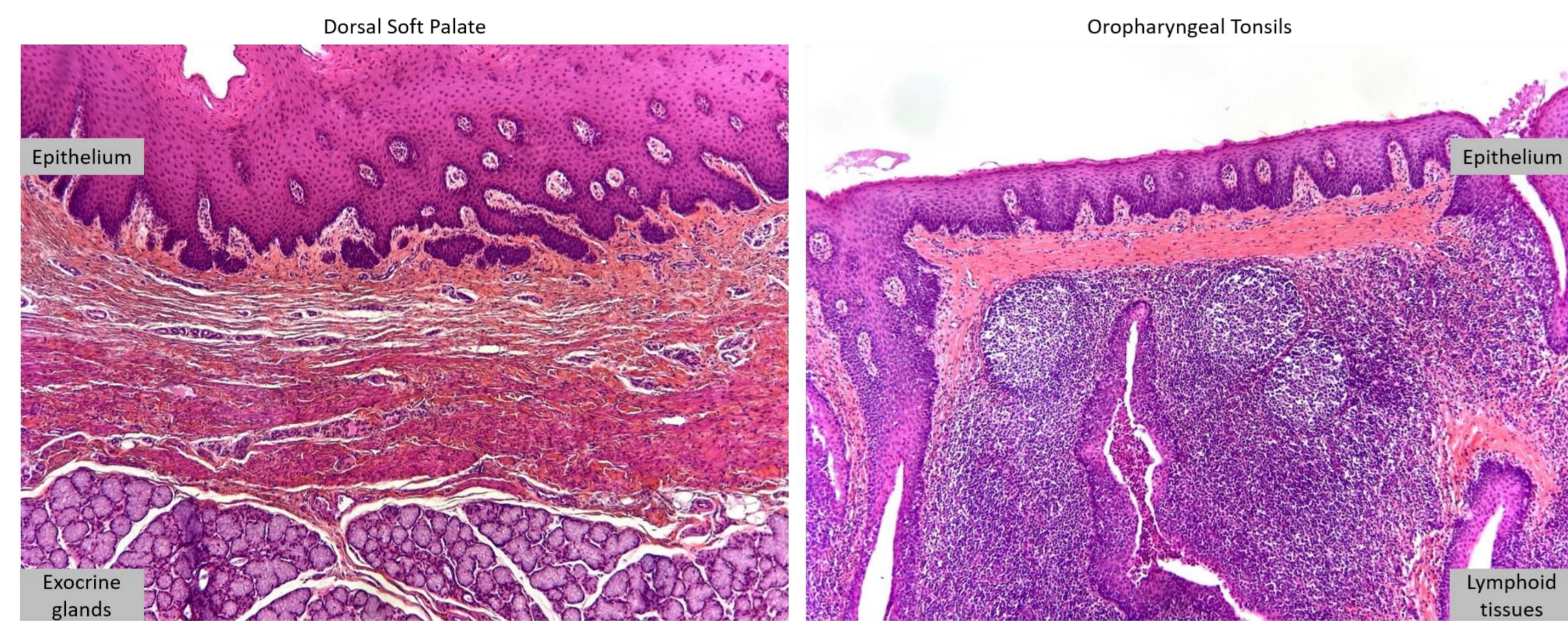
- DSP cells were cultured in monolayers, fixed, then labelled with antibodies targeting epithelial markers (occludin, cytokeratin), fibroblastic markers (vimentin) and FMDV receptor ( $\alpha_v\beta_6$  integrin).

- Significant expression of occludin was detected, indicating an epithelial nature.
- Greater expression of vimentin than cytokeratin was detected, indicating an epithelial-mesenchymal transition.
- High expression of the major receptor for FMDV was detected.



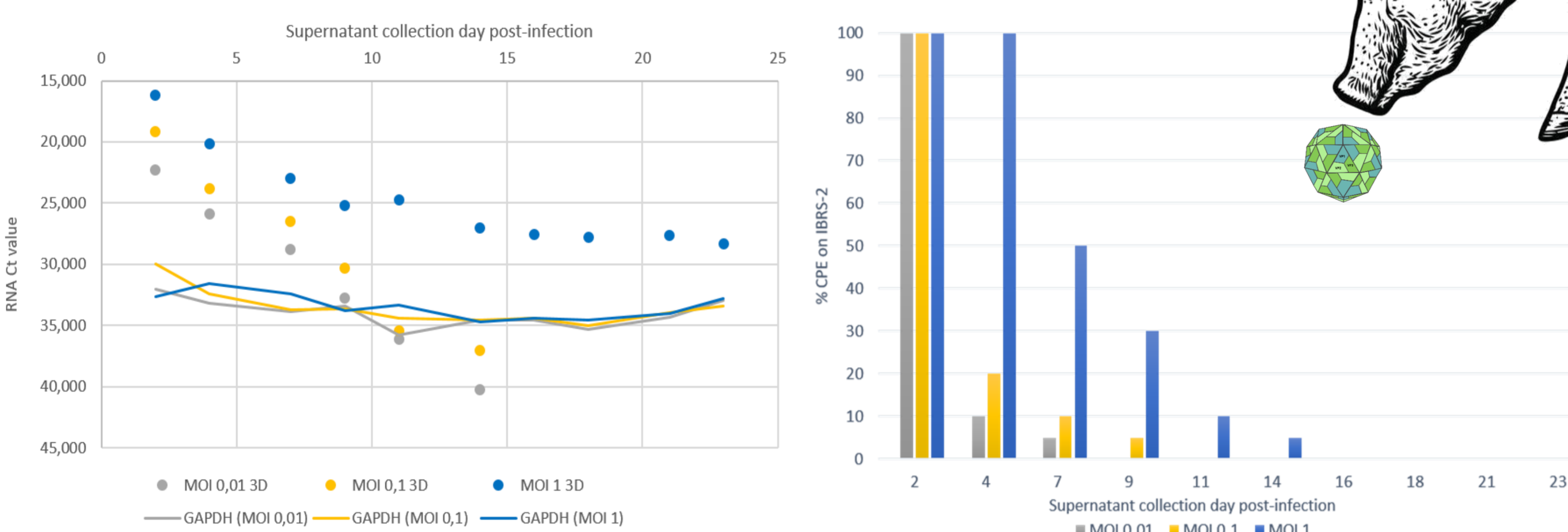
## ① Epithelial structures characterization

- Oropharyngeal tonsils and DSP samples were stained using HES (hematoxylin-eosin-saffron) in order to localize epithelial structures.
- Epithelium were identified in both oropharyngeal tonsils and DSP samples



## ③ Infection of DSP monolayers

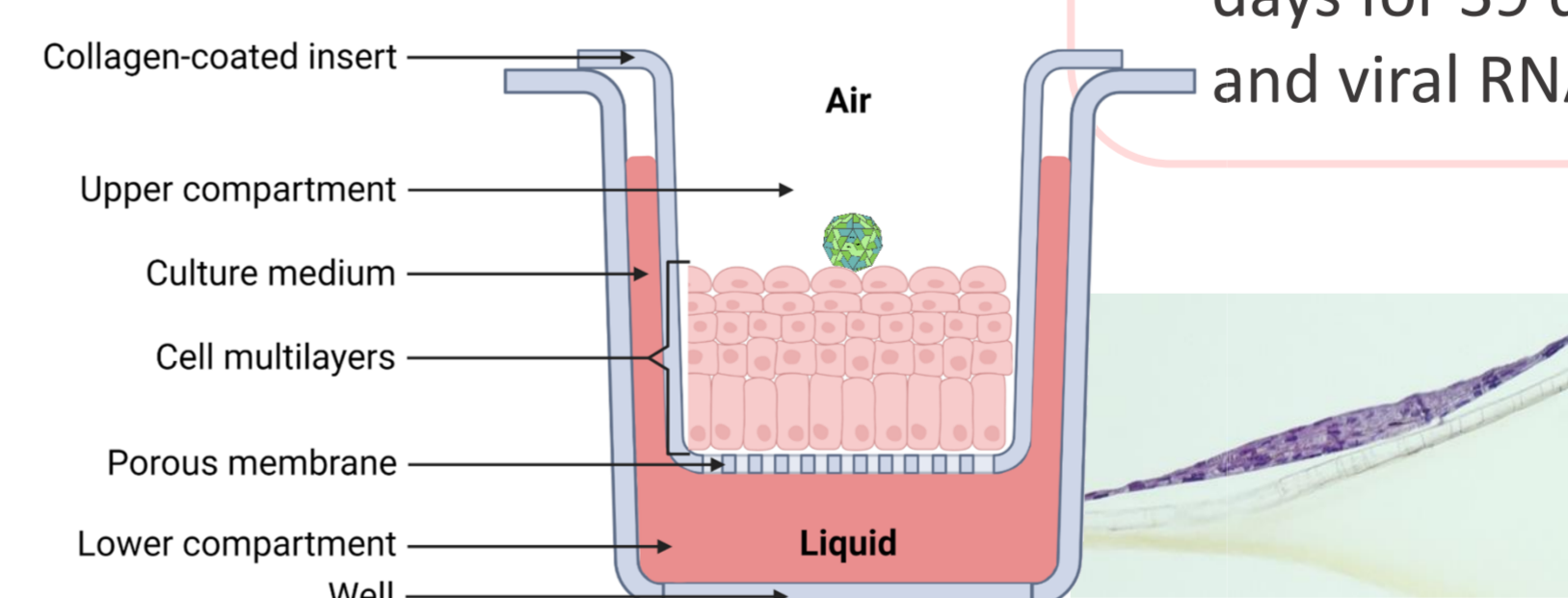
- DSP cells were grown in monolayers and infected with a type-O FMDV at three multiplicity of infection (MOI 0.01; 0.1; 1).
- Culture supernatants were collected every two or three days for 112 dpi and analyzed for infectious virus, antigens and viral RNA.



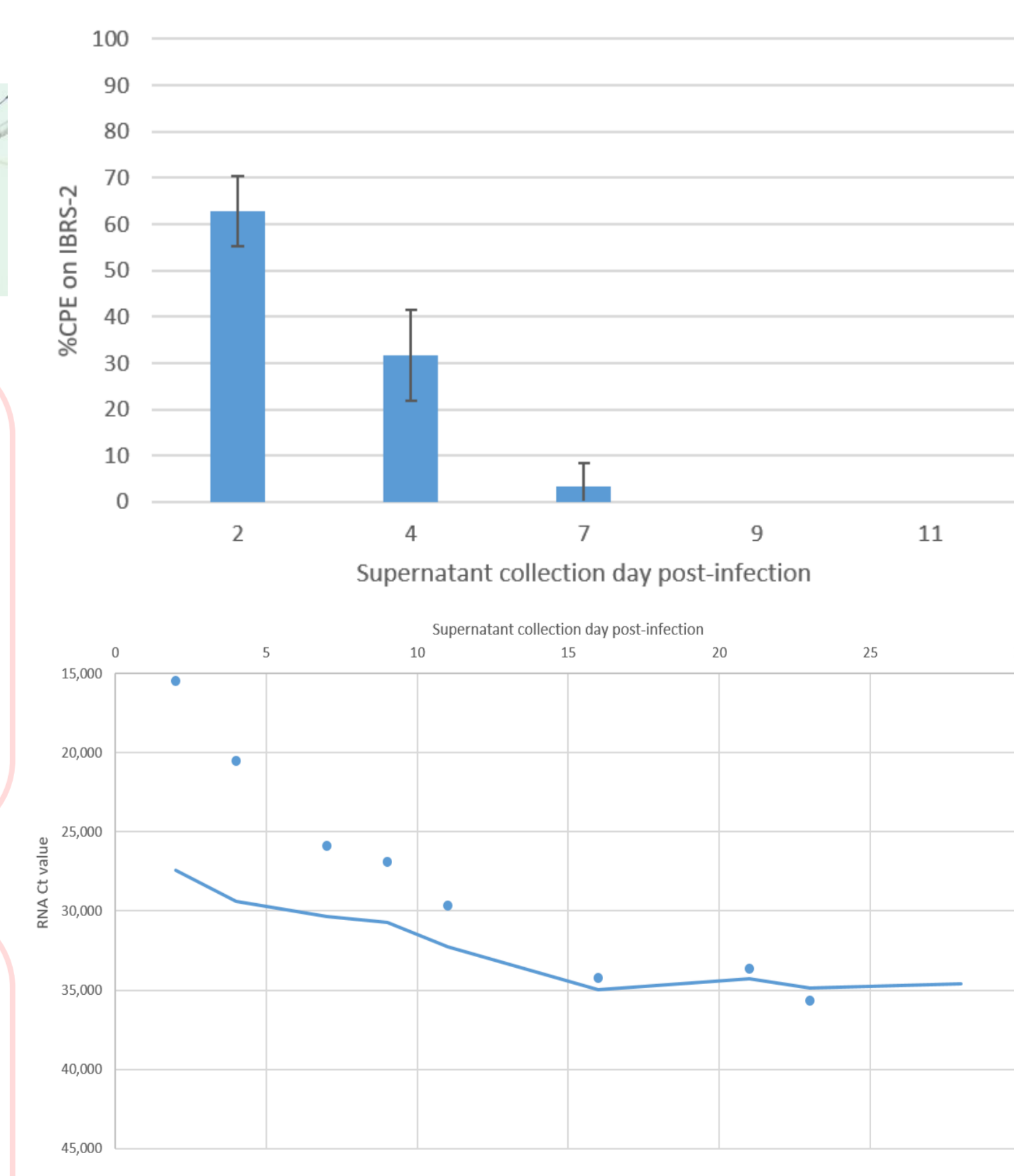
- MOI 1 was considered as the optimal infection condition for porcine DSP cells.
- Infectious virus were detected by viral isolation up to 14 dpi in culture supernatants.
- Viral antigen were detected up to 16 dpi by immunofluorescence.
- Viral RNA were detected up to 60 dpi by RTqPCR.

## ④ Infection of DSP multilayers

- DSP cells were grown in multilayers, on collagen membrane, at the air-liquid interface and then infected with a type-O FMDV at MOI 1.
- Culture supernatants were collected every two or three days for 39 dpi and analyzed for infectious virus, antigen and viral RNA.



- Multilayer depth was determined using HES staining.
- Infectious virus were detected by virus isolation up to 7 dpi in culture supernatants.
- Viral antigen were detected up to 9 dpi by immunofluorescence.
- Viral RNA were detected up to 23 dpi by RTqPCR.



## Conclusion & perspectives

- We have succeeded in developing a primary porcine dorsal soft palate cell model susceptible to FMDV infection.
- A similar model based on oropharyngeal tonsil cells, could not be developed since these cells did not maintain in culture.
- Consistent with what has been observed in vivo in pigs, no evidence of FMDV persistence could be detected in our cell model (no infectious virus detected after 28 dpi).

- Porcine DSP cells could be immortalized to obtain a cell line suitable for FMDV research and diagnosis.
- These cells could constitute a privileged tool in the differential diagnosis of FMDV, if susceptible to the other viruses.

## References

- Stenfeldt C, Arzt J. The Carrier Conundrum; A Review of Recent Advances and Persistent Gaps Regarding the Carrier State of Foot-and-Mouth Disease Virus. Pathogens [Internet]. 28 f vr 2020 [cited 30 sept 2020];9(3).
- Stenfeldt C, Pacheco JM, Rodriguez LL, Arzt J. Early Events in the Pathogenesis of Foot-and-Mouth Disease in Pigs; Identification of Oropharyngeal Tonsils as Sites of Primary and Sustained Viral Replication. PLoS One [Internet]. 3 sept 2014 [cited 18 janv 2021];9(9). Disponible sur: <https://www.ncbi.nlm.nih.gov/pmc/articles/PMC4153717/>
- Stenfeldt C, Pacheco JM, Smoliga GR, Bishop E, Pauszek SJ, Hartwig EJ, et al. Detection of Foot-and-mouth Disease Virus RNA and Capsid Protein in Lymphoid Tissues of Convalescent Pigs Does Not Indicate Existence of a Carrier State. Transboundary and Emerging Diseases. 2016;63(2):152-64.