



HAL
open science

Field evaluation of a safe and cost-effective shipment of suspected samples to diagnostic laboratories using lateral flow devices

Aurore Romey, Graham J. Belsham, Souheyla Benfrid, Cindy Bernelin-Cottet, Abdalnaci Bulut, Michael Eschbaumer, Claude Hamers, Pascal Hudelet, Syed Jamal, Anthony Relmy, et al.

► To cite this version:

Aurore Romey, Graham J. Belsham, Souheyla Benfrid, Cindy Bernelin-Cottet, Abdalnaci Bulut, et al.. Field evaluation of a safe and cost-effective shipment of suspected samples to diagnostic laboratories using lateral flow devices. Global Foot-and-Mouth (F M D) Research Alliance (G F R A), Nov 2021, Virtual Conference, Argentina. anses-04526323

HAL Id: anses-04526323

<https://anses.hal.science/anses-04526323>

Submitted on 29 Mar 2024

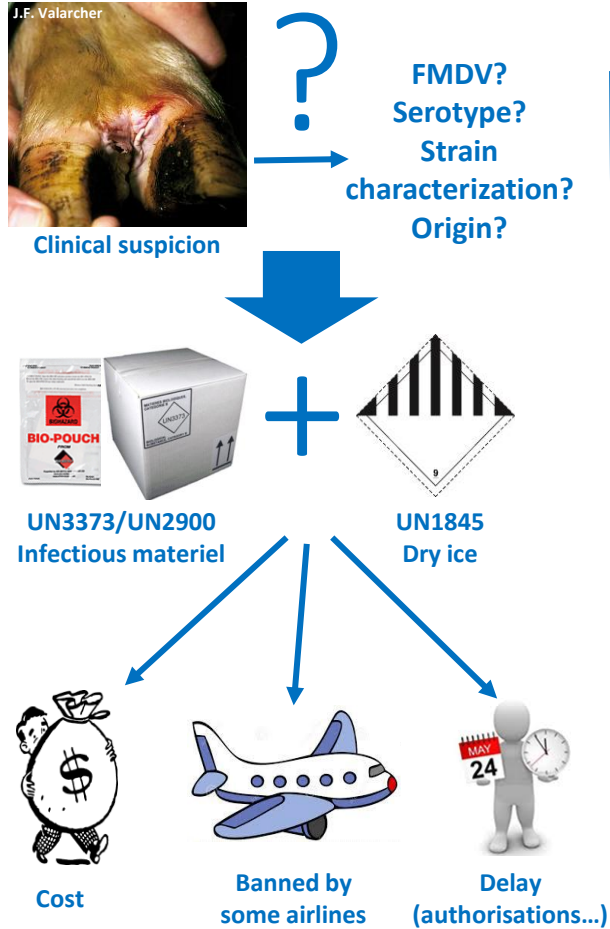
HAL is a multi-disciplinary open access archive for the deposit and dissemination of scientific research documents, whether they are published or not. The documents may come from teaching and research institutions in France or abroad, or from public or private research centers.

L'archive ouverte pluridisciplinaire **HAL**, est destinée au dépôt et à la diffusion de documents scientifiques de niveau recherche, publiés ou non, émanant des établissements d'enseignement et de recherche français ou étrangers, des laboratoires publics ou privés.

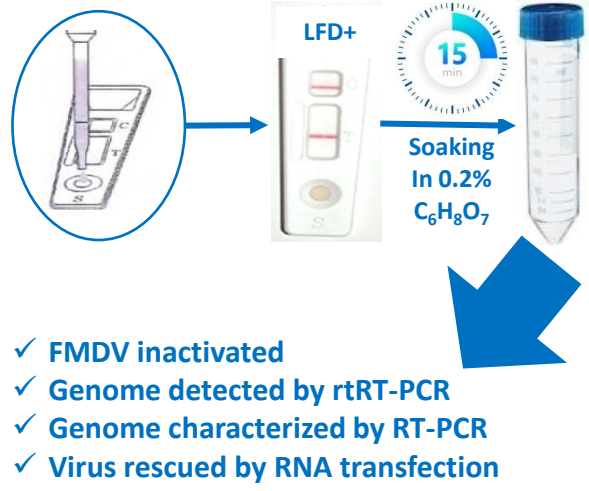


Distributed under a Creative Commons Attribution - NonCommercial - NoDerivatives 4.0 International License

Context



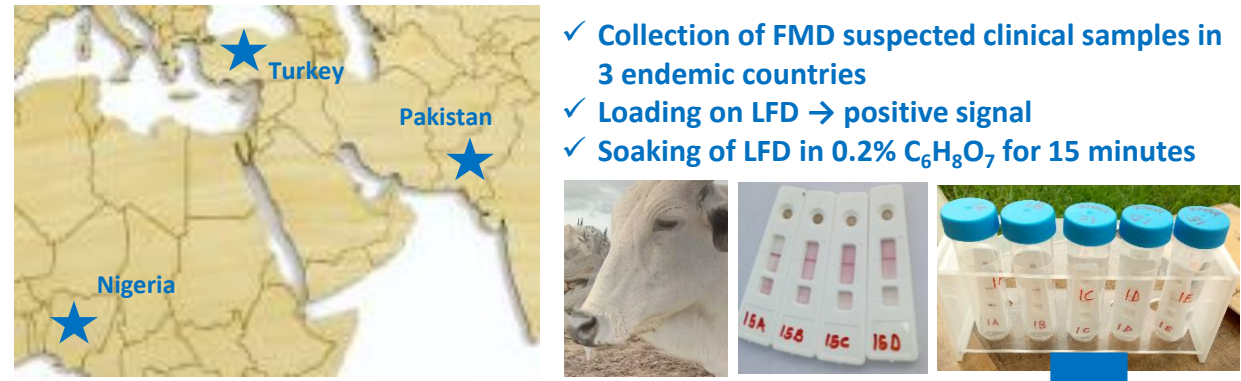
Evaluation in the laboratory



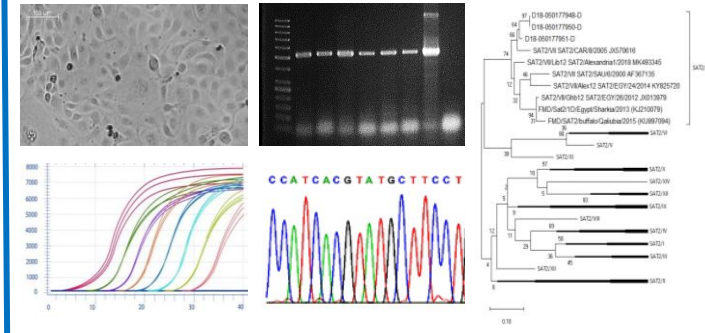
Transboundary and Emerging Diseases
ORIGINAL ARTICLE
Safe and cost-effective protocol for shipment of samples from Foot-and-Mouth Disease suspected cases for laboratory diagnostic

anses
eufmd 2013
European Commission for the control of foot-and-mouth disease
GFRA
Global Foot-and-Mouth Disease Research Alliance

Evaluation in the field



- ✓ The safety of the inactivation protocol confirmed
- ✓ FMDV genome detected by rtRT-PCR
- ✓ FMDV typed by RT-PCR
- ✓ Virus rescued by RNA transfection
- ✓ Whole genome sequenced
- ✓ Strain characterized by phylogenetic study



EUFMD - Fund for Applied Research (EuFMD-FAR) - 2017
NATIONAL VETERINARY INSTITUTE, VOM, NIGERIA
UNIVERSITY OF MALAKAND
DTU
Boehringer Ingelheim
FLI
anses

Bakkali Kassimi L.¹, Belsham G.J.², Benfrid S.¹, Bernelin-Cottet C.¹, Bulut A.N.³, Eschbaumer M.⁴, Hamers C.⁵, Hudelet P.⁵, Jamal S.M.⁶, Relmy A.¹, Romey A.^{†1}, Ularanu H.G.⁷, Wungak Y.S.⁷, Zientara S.¹ and Blaise-Boisseau S.¹

AUTHORS

¹Laboratoire de Santé Animale, Laboratoire de référence Européenne, Nationale, FAO et OIE pour la Fièvre Aphteuse, UMR Virologie 1161, Université Paris-Est, Anses, Maisons-Alfort, France; ² DTU National Veterinary Institute, Technical University of Denmark, Lindholm, Denmark (DTU-Vet); ³ SAP/FMD Institute, Dumlupinar Bulvarı, 35, 06510, Ankara, Turkey; ⁴ Institute of Diagnostic Virology, Friedrich-Loeffler-Institut, Südufer 10, 17493, Greifswald-Insel Riems, Germany; ⁵ The Veterinary Public Health Center, Boehringer Ingelheim Animal Health, 29 Avenue Tony Garnier, 69007 Lyon France; ⁶ Department of Biotechnology, University of Malakand (UM), Chakdara, Pakistan; ⁷ FMD Research Centre, Nat. Vet. Res. Inst. (NVRI), PMB 01 Vom, Nigeria