



**HAL**  
open science

## Improvement of RT-PCR detection of chronic bee paralysis virus (CBPV) required by the description of genomic variability in French CBPV isolates.

Philippe Blanchard, Violaine Olivier, Anne-Laure Iscache, Olivier Celle, Frank Schurr, Perrine Lallemand, Magali Ribière

### ► To cite this version:

Philippe Blanchard, Violaine Olivier, Anne-Laure Iscache, Olivier Celle, Frank Schurr, et al.. Improvement of RT-PCR detection of chronic bee paralysis virus (CBPV) required by the description of genomic variability in French CBPV isolates.. *Journal of Invertebrate Pathology*, 2008, 97 (2), pp.182-5. 10.1016/j.jip.2007.07.003 . hal-00403564

**HAL Id: hal-00403564**

**<https://anses.hal.science/hal-00403564>**

Submitted on 8 Sep 2009

**HAL** is a multi-disciplinary open access archive for the deposit and dissemination of scientific research documents, whether they are published or not. The documents may come from teaching and research institutions in France or abroad, or from public or private research centers.

L'archive ouverte pluridisciplinaire **HAL**, est destinée au dépôt et à la diffusion de documents scientifiques de niveau recherche, publiés ou non, émanant des établissements d'enseignement et de recherche français ou étrangers, des laboratoires publics ou privés.

1 **IMPROVEMENT OF RT-PCR DETECTION OF CHRONIC BEE**  
2 **PARALYSIS VIRUS (CBPV) REQUIRED BY THE DESCRIPTION OF**  
3 **GENOMIC VARIABILITY IN FRENCH CBPV ISOLATES.**

4

5 **Philippe Blanchard\***, **Violaine Olivier**, **Anne-Laure Iscache**, **Olivier**  
6 **Celle**, **Frank Schurr**, **Perrine Lallemand**, **Magali Ribière.**

7

8 Agence Française de Sécurité Sanitaire des Aliments (AFSSA), Les Templiers, Route  
9 des Chappes, BP 111, 06902 Sophia Antipolis, France.

10

11

12

13

14

15 \*Corresponding author

16 Mailing address: Blanchard Philippe, AFSSA Sophia-Antipolis, Unité Pathologie de  
17 l'Abeille, Les Templiers, BP 111, Fr – 06902 Sophia Antipolis

18 Telephone number: +33 (0) 492.943.726

19 Fax number: +33 (0) 492.943.701

20 e-mail: [p.blanchard@afssa.fr](mailto:p.blanchard@afssa.fr)

21 **Abstract**

22 A new RT-PCR test has been developed to diagnose Chronic bee paralysis virus  
23 (CBPV), able to detect genetically variable viral isolates. In fact, up to 8.7% divergence  
24 between partial nucleotide sequences from viral isolates from French honey bees was  
25 highlighted in a preliminary variability study. The previously-described RT-PCR was  
26 unable to detect all these viral isolates and RT-PCR diagnosis needed improvement. The  
27 new RT-PCR test allow to detect up to 40% of extra CBPV isolates.

28

29 Keywords: Chronic bee paralysis virus (CBPV), RT-PCR diagnosis, Genomic variability,  
30 *Apis mellifera*.

31

32 **Short communication**

33 Chronic paralysis is known to induce significant losses in honey bee colonies (Allen &  
34 Ball, 1996; Ball & Bailey, 1997). The pathology is characterized by clusters of trembling,  
35 flightless, crawling bees and by individual bees, sometimes hairless, standing at the hive  
36 entrance (Bailey *et al.*, 1983). Current diagnosis of the clinical disease is based on an  
37 Agarose Gel ImmunoDiffusion (AGID) test (Ball, 1999; Ribière *et al.*, 2000),  
38 complemented by RT-PCR (Ribière *et al.*, 2002). First isolated in 1963 (Bailey *et al.*,  
39 1963), the aetiological agent of this pathology is the Chronic bee paralysis virus (CBPV),  
40 which consists of a single stranded RNA genome. Only a short fragment of the viral  
41 genome sequence has been reported to date (Ribière *et al.*, 2002) and research to  
42 sequence the complete CBPV genome is currently in progress in our laboratory.

43 Samples of trembling and crawling bees from apiaries in different French departments  
44 were recently subjected to AGID and RT-PCR tests. Although the AGID test gave positive  
45 results, no amplification was obtained with RT-PCR. The genomic variability between  
46 partial sequences of CBPV from several bee samples was indicated. Genomic variability  
47 in RNA viruses has been observed widely (Domingo *et al.*, 1996). This study led us to

48 design new RT-PCR primers able to detect all these viral samples and thereby improve  
49 the CBPV diagnosis.

50 In this paper, we describe the development of a new RT-PCR diagnostic test for the  
51 detection of CBPV isolates presenting genomic variability. The 5' RACE System  
52 (Invitrogen) was used on the reference isolate (Isolate A) to obtain an additional  
53 sequence from the one reported previously (Rivière *et al.*, 2002). Then, a preliminary  
54 study of the genomic variability of seven CBPV viral isolates was begun. Bee samples  
55 were collected from honey bee colonies presenting typical symptoms of chronic paralysis,  
56 located in the French departments of Aisne, Alpes-Maritimes, Drôme, Essonne and  
57 Rhône. Sample preparation, RNA extraction and cDNA synthesis were performed as  
58 described previously (Rivière *et al.*, 2002; Blanchard *et al.*, 2007). Several primers were  
59 tested and two sets of primers were retained, allowing to obtain by assembling a  
60 sequence of 1285 bases for each isolate. Using these 2 sets of primers, a next PCR was  
61 performed with a high-fidelity DNA polymerase (Platinum® Pfx DNA Polymerase,  
62 Invitrogen). The PCR products were purified using the Qiaquick PCR purification kit  
63 (Qiagen) and sequenced (Millegen, France). The 1285 bp sequence, located in the  
64 putative viral RNA-dependent RNA polymerase (RdRp) gene region of CBPV, was  
65 aligned using the Clustal W method in MegAlign in the Dnastar package.

66 Isolate A is the CBPV reference isolate obtained by infectivity test as previously  
67 described (Rivière *et al.*, 2000). Isolate B is the sequence obtained from field samples  
68 which presented the most variability with the reference isolate. Analysis of sequence pair  
69 distances using the Clustal W method revealed 8.7% divergence between the two  
70 sequences, mainly at the 3' region of this sequence whereas analysis of the amino acid  
71 sequence revealed only 2.5% divergence between the two sequences. The alignment of  
72 the sequence of the two isolates is illustrated in Figure 1.

73 These initial observations demonstrated the nucleotide sequence variability of the 3'  
74 region, where primer pair CBPV 1 and CBPV 2 used for the first RT-PCR test was  
75 designed (Rivière *et al.*, 2002), revealing 3 and 4 mismatches respectively in each

76 primer. A new RT-PCR test 2 using the primer pair designated CBPV 1-1 and CBPV 1-2  
77 was designed by Primer3 Output and targeted the most highly conserved nucleotide  
78 region. The sequences, orientations and locations of these two oligonucleotide primer  
79 sets for the detection of CBPV by RT-PCR and the sizes of each amplification product  
80 are presented in Table 1 and in Figure 1. Amplifications were carried out in 25 µl total  
81 reaction volume using the Platinum<sup>®</sup> Taq DNA Polymerase (Invitrogen). The final PCR  
82 reaction contained 20 mM of Tris-HCl pH 8.4, 50 mM of KCl, 1.5 mM of MgCl<sub>2</sub>, 0.2 mM of  
83 dNTPs mix PCR grade, 0.4 µM of each primer, 2.5 units of Platinum<sup>®</sup> Taq DNA  
84 Polymerase and 2.5 µl of cDNA synthesised as described by Ribière *et al.* (2002). The  
85 thermal cycling conditions were 1 min at 95°C (denaturing of the template and activation  
86 of the enzyme), followed by 30 cycles consisting of denaturing at 95°C for 30 sec,  
87 annealing at 55°C for 30 sec and extension at 72°C for 1 min, completed by a final  
88 elongation at 72°C for 5 min. Negative controls (RT and PCR controls) were included.  
89 The PCR products were then electrophoresed in 1% agarose gel in TAE buffer, stained  
90 with ethidium bromide, and visualised under UV light (Figure 2). No amplification was  
91 detected in the negative controls of either RT-PCR test (N<sub>1</sub> and N<sub>2</sub> for RT control and N'<sub>1</sub>  
92 and N'<sub>2</sub> for PCR control). Only the CBPV reference isolate and two of the seven tested  
93 isolates were detected with RT-PCR test 1 using primers CBPV 1 and CBPV 2, whereas  
94 all the isolates including isolate B (lane B<sub>2</sub>) could be detected with RT-PCR test 2 using  
95 primers CBPV 1-1 and CBPV 1-2. These results confirm the performance of the RT-PCR  
96 test 2, which is able to detect viral isolates, even if they present genomic variability. The  
97 limit of detection of CBPV by this new RT-PCR test was of 10<sup>4</sup> CBPV copies per reaction  
98 which is identical to the one of the RT-PCR test 1, however lower than the limit of  
99 detection of the CBPV TaqMan PCR previously determined at 100 copies (Blanchard *et*  
100 *al.*, 2007).

101 The genomic variability highlighted in this preliminary study of several French CBPV  
102 isolates showed 8.7% divergence between partial sequences obtained from these  
103 isolates and located in the putative viral RNA polymerase gene region. However, this

104 nucleotide sequence variability did not strongly affect the amino acid sequence of the  
105 transcribed RdRp protein. Sequencing of the complete CBPV genome sequence,  
106 consisting of two main positive sense single stranded RNAs (RNA 1 and RNA 2) (Overton  
107 *et al.*, 1982), is currently in progress in our laboratory. Preliminary results for genomic  
108 variability of these two RNAs confirmed the variability between isolates A and B, and  
109 revealed respectively 9.2 and 8.7% of divergence. CBPV detection by RT-PCR had to be  
110 improved to take this genomic variability into account. The RT-PCR test 2, described in  
111 this paper, is able to detect different viral isolates. To confirm these results, a  
112 complementary study was carried out to determine the proportion of isolates not detected  
113 by the RT-PCR test 1, allowing to assess the percentage of CBPV genomic variability.  
114 This study concerned 70 samples coming from France and European countries. All  
115 samples were detected CBPV positive with the second test (CBPV 1-1 / CBPV 1-2), while  
116 only 42 samples were detected CBPV positive with the first test (CBPV 1 / CBPV 2),  
117 indicating that nearly 40% of the samples are genetically divergent of the reference  
118 isolate. At the same time, a real-time two-step RT-PCR assay was developed, using a  
119 primers and probe set located in Figure 1 and able to detect and quantify such isolates  
120 (Blanchard *et al.*, 2007).

121 Genomic variability has already been described on isolates from different countries for  
122 honeybee viruses such as *Acute bee paralysis virus* (Bakonyi *et al.*, 2002) and *Sacbrood*  
123 *virus* (Grabensteiner *et al.*, 2001). We are currently carrying on the study of genomic  
124 variability of CBPV strains collected from different countries in Europe and worldwide.  
125 This study of isolates from several countries should validate the reliability of the RT-PCR  
126 test and sequencing of these isolates will permit phylogenetic analyses, assessing the  
127 genetic relationships between strains of different geographic origins.

128

### 129 **Acknowledgements**

130 This work was supported by the French Ministère de l'Agriculture et de l'Alimentation and  
131 with funds from the "Fonds Européens d'Orientation et de Garantie Agricole" (FEOGA), in

132 accordance with the French programme for the improvement of the production and  
133 commercialisation of beekeeping products. We are grateful to the collaborators and  
134 beekeepers for having kindly provided bee samples.

135

### 136 **Captions to figures**

137 Figure 1.

138 Alignment of the nucleotide sequences (1285b) of the two CBPV isolates: isolate A is the  
139 reference isolate and isolate B, the one presenting the most variability. Nucleotides  
140 differing between the sequences are indicated in white. The two primer sets used in RT-  
141 PCR tests (CBPV 1 and CBPV 2 for RT-PCR test 1 and CBPV 1-1 and CBPV 1-2 for RT-  
142 PCR test 2) and the primers (qCBPV forward, qCBPV reverse) and probe (qCBPV probe)  
143 set used in quantitative real-time PCR described by Blanchard et al. (2007) are located.

144

145 Table 1.

146 Primers used for CBPV RT-PCR tests, CBPV 1 and CBPV 2 for RT-PCR test 1 (Ribière  
147 *et al.*, 2002), CBPV 1-1 and CBPV 1-2 for RT-PCR test 2 (this article).

148

149 Figure 2.

150 Visualisation of the PCR products obtained with the RT-PCR test 1 (Ribière *et al.*, 2002)  
151 and RT-PCR test 2, amplifying PCR fragments of 455 bp and 570 bp respectively.

152 Lane MW: 100 bp DNA Ladder (Invitrogen).

153 Lane N: RT negative controls.

154 Lane A: CBPV reference isolate A.

155 Lane B to lane H: CBPV isolates from different departments.

156 Lane N': PCR negative controls.

157 References

158

159 Allen, M. & Ball, B. V., 1996. The incidence and world distribution of honey bee viruses.  
160 Bee World 77, 141-162.

161 Bailey, L., Ball, B. V. & Perry, J. N., 1983. Honeybee paralysis: its natural spread and its  
162 diminished incidence in England and Wales. J. Apic. Res. 22, 191-195.

163 Bailey, L., Gibbs, A. J. & Woods, R. D., 1963. Two viruses from adult honey bees (*Apis*  
164 *mellifera* Linnaeus). Virol. 21, 390-395.

165 Bakonyi, T., Grabensteiner, E., Kolodziejek, J., Rusvai, M., Topolska, G., Ritter, W. &  
166 Nowotny, N., 2002. Phylogenetic analysis of acute bee paralysis virus strains.  
167 Appl. Environ. Microbiol. 68, 6446-6450.

168 Ball, B. V., 1999. Paralysis. In *Bee disease diagnosis*, pp. 81-89. Edited by M. E. Colin, B.  
169 V. Ball & M. Kilani: Options Méditerranéennes.

170 Ball, B. V. & Bailey, L., 1997. Viruses. In *Honey bee pests, predators, & diseases*, Third  
171 edition, pp. 11-32. Edited by R. A. Morse & K. Flottum. Medina: A.I. Root  
172 Company.

173 Blanchard, P., Ribière, M., Celle, O., Lallemand, P., Schurr, F., Olivier, V., Iscache, A. L.  
174 & Faucon, J. P., 2007. Evaluation of a real-time two step RT-PCR assay for  
175 quantitation of Chronic bee paralysis virus (CBPV) genome in experimentally-  
176 infected bee tissues and in life stages of a symptomatic colony. J. Virol. Methods  
177 141, 7-13.

178 Domingo, E., Escarmis, C., Sevilla, N., Moya, A., Santiago, F., Quer, E. J., Novella, I. S.,  
179 Holland, J.J., 1996. Basic concepts in RNA virus evolution. The FASEB Journal  
180 10, 859-864.



181 Grabensteiner, E., Ritter, W., Carter, M. J., Davison, S., Pechhacker, H., Kolodziejek, J.,  
182 Boecking, O., Derakhshifar, I., Moosbeckhofer, R., Licek, E. & Nowotny, N.,  
183 2001. Sacbrood virus of the honeybee (*Apis mellifera*): rapid identification and  
184 phylogenetic analysis using reverse transcription-PCR. Clin. Diagn. Lab.  
185 Immunol. 8, 93-104.

186 Overton, H. A., Buck, K. W., Bailey, L. & Ball, B. V., 1982. Relationships between the  
187 RNA components of chronic bee-paralysis virus and those of chronic bee-  
188 paralysis virus associate. J. Gen. Virol. 63, 171-179.

189 Ribière, M., Faucon, J. P. & Pépin, M., 2000. Detection of chronic bee paralysis virus  
190 infection: application to a field survey. Apidologie 31, 567-577.

191 Ribière, M., Triboulot, C., Mathieu, L., Aurières, C., Faucon, J. P. & Pépin, M., 2002.  
192 Molecular diagnosis of chronic bee paralysis virus infection. Apidologie 33, 339-  
193 351.  
194  
195

IsolateA : AGGGACACTATCTAGTGGCGATGCCCAACTGCCTCAACACAGGCAACAACCCAGCCAAAGCGACCGGACTGGAGCAATTTTCCCAAGAAATGGATGGAAAACGGAAATCATCCCGGAAGACTC : 125  
IsolateB : AGGGACACTATCTAGTGGCGATGCCCAACTGCCTCAACACAGGCAACAATCCAGCCAAAGCGACCGGACTGGAGCAATTTTCCCAAGAAATGGATGGAAAACGGAAATCATCCCGGAAGACTC : 125

CBPV 1-1

IsolateA : ATTCAACCCCGGAAATGCTTCATCAGACACCGAATCTGATTATTGTAAGGCCAAAACCTGGAAATCATCCGTAGATCTGGCTCTCAGCCCATTTGGGAGCCCTCTCTGTAAGGACCGAGAGA : 250  
IsolateB : GTTCACCCCGGAAATGCTTCATCAGACACCGAATCTGATTATTGTAAGGCCAAAACCTGGAAATCATCCGTAGATCTGGCTCTCAGCCCATTTGGGAGCCCTCTCTGTAAGGACCGAGAGA : 250

IsolateA : CGACGGGACCAAACTCATCCACTACCAGTACAACATACCCCTCTCCACTCCCACTCAACCTTCCAGATTTATTACCACCGAAGCGGTTCAAGAAATCTCAGACCAACTCTTACGGTCCCAC : 375  
IsolateB : CGACGGGACCAAACTCATCCACTACCAGTACAACATACCCCTCTCCACTCCCACTCAACCTTCCAGATTTATTACCACCGAAGCGGTTCAAGAAATCTCAGACCAACTCTTACGGTCCCAC : 375

IsolateA : CCATAACATCGAGAGCTCCGACACATACTTCACTCTCTCATCAAACGGGAGTCCGATCCCGGACACTCCGTTACGGCACTCCCTCGAAGAAATCTTAAAGCACTCAGATCAGTTGGTT : 500  
IsolateB : CCATAACATCGAGAGCTCCGACACATACTTCACTCTCTCATCAAACGGGAGTCCGATCCCGGACACTCCGTTACGGCACTCCCTCGAAGAAATCTTAAAGCACTCAGATCAGTTGGTT : 500

IsolateA : CAAGAGGCTTCATTCCCTGTAGATTTCTCGATATGGGTCAAACGCTACCCAGAATGGCCAAACGACAGCTCATGGCCGCGGAAATCGCGTCTCAGCGACCCAGAACCCTGCCGCAAGTACC : 625  
IsolateB : CAAGAGGCTTCATTCCCTGTAGATTTCTCGATATGGGTCAAACGCTACCCAGAATGGCCAAACGACAGCTCATGGCCGCGGAAATCGCGTCTCAGCGACCCAGAACCCTGCCGCAAGTACC : 625

qCBPV forward      qCBPV probe      CBPV 1-2 / qCBPV reverse

IsolateA : CCTTGATAAAGCACTTCTCAAGAACGAGACCACCGCCAAAGTTCCGTGGATCCAAGAAACATCAGTCCACCAAGCGACGATTTCTAGTACTCTGGGACCTTACATCAGCGCCATAGAACACGCC : 750  
IsolateB : CCTTGATAAAGCACTTCTCAAGAACGAGACCACCGCCAAAGTTCCGTGGATCCAAGAAACATCAGTCCACCAAGCGACGATTTCTAGTACTCTGGGACCTTACATCAGCGCCATAGAACACGCC : 750

CBPV 1

IsolateA : CCCTTCACTGGCCATTCTTATCAAGGGGCTGACACCGAAGAGAGATGTGATAAGTTTCATGCTAAACAGATACGAGGATTTCTTGAGATCGAATTCGGTCTCTTCGATCAAACTCTGAT : 875  
IsolateB : CCCTTCACTGGCCATTCTTATCAAGGGGCTGACACCGAAGAGAGATGTGATAAGTTTCATGCTAAACAGATACGAGGATTTCTTGAGATCGAATTCGGTCTCTTCGATCAAACTCTGAT : 875

IsolateA : GAAAGATCTCTTACCTATCTCCAACTCAGCTTCTTACTCGACCCTTACACACCTAACTCTCAAAAGSACAATCAATCAACCGCCAAACCAATTCATCCGCTTTATGCTTTACACCCCTTA : 1000  
IsolateB : GAAAGATCTCTTACCTATCTCCAACTCAGCTTCTTACTCGACCCTTATCACCCAAAGCTCTCAAAAGSACAATCAATCAACCGCCAAACCAATTCATTCATCCGCTTTATGCTTTACACCCCTTA : 1000

IsolateA : CCAACGTTGCTTTAGTAGATTGGTACCCACTACAAGCCGAAAGTACTCCTTCTCAGGTGACCCCTCACACCTCCATCGGCAACCGATTTCATCAACGCATTCAATATCTGGCTCTCTCTTCCG : 1125  
IsolateB : CCAACGTTGCTTTAGTAGATTGGTACCCACTACAAGCCGAAAGTACTCCTTCTCAGGTGACCCCTCACACCTCCATCGGCAACCGATTTCATCAACGCATTCAATATCTGGCTCTCTCTTCCG : 1125

IsolateA : AAAC TGCCCA CAATAGTGGCACTCTGCTATGAGGCTCAACACCGCATCGCTGGCTGGCGCTAACCTCTTATCAGGTCGATACAACCTCAAAATTTCTGCTTCTCTCGCCTTTCGTTCCG : 1250  
IsolateB : AAAC TGCCCA CAATAGTGGCACTCTGCTATGAGGCTCAACACCGCATCGCTGGCTGGCGCTAACCTCTTATCAGGTCGATACAACCTCAAAATTTCTGCTTCTCTCGCCTTTCGTTCCG : 1250

← CBPV 2

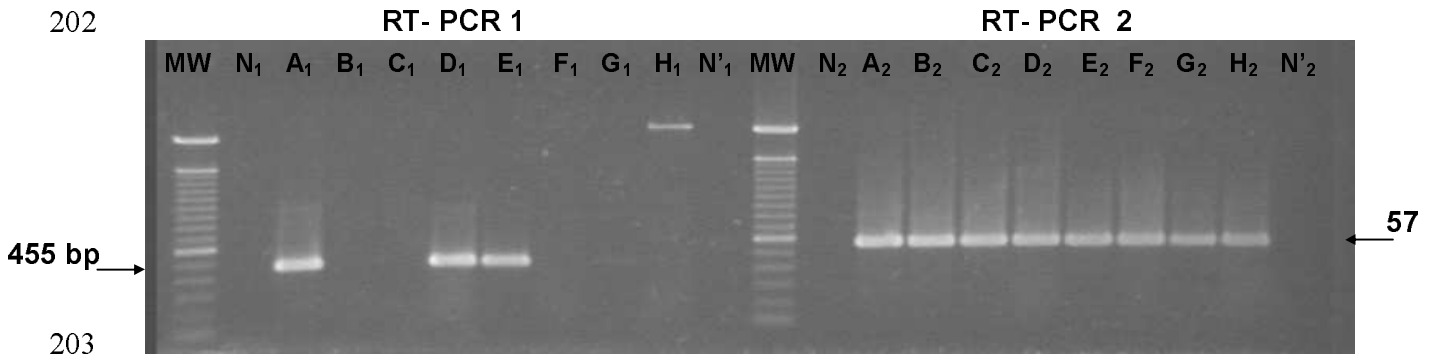
IsolateA : TAAGATTACACTTCTTCTCACTTCTCCCAAGCCA : 1285  
IsolateB : TAAGATTACACTTCTTCTCACTTCTCCCAAGCCA : 1285

196  
197  
198

Figure 1

199  
200  
201  
202

Figure 2



203  
204  
205  
206  
207

208 Table 1 :  
209

Primer name	Primer sequence	5' - position	Product size (bp)
CBPV 1	5'- AGT TGT CAT GGT TAA CAG GAT ACG AG – 3'	806	455
CBPV 2	5' - TCT AAT CTT AGC ACG AAA GCC GAG – 3'	1260	
CBPV 1-1	5' - TCA GAC ACC GAA TCT GAT TAT TG – 3'	147	570
CBPV 1-2	5' - ACT ACT AGA AAC TCG TCG CTT CG – 3'	716	

210

211 Nucleotide positions refer to the sequence of 1285 b of the CBPV reference isolate.

212