



**HAL**  
open science

**Phylogenetic analysis of the RNA-dependent RNA polymerase (RdRp) and a predicted structural protein (pSP) of the Chronic bee paralysis virus (CBPV) isolated from various geographic regions.**

Philippe Blanchard, Frank Schurr, Violaine Olivier, Olivier Celle, Karina Antùnez, Tamàs Bakonyi, Hélène Berthoud, Eric Haubruge, Mariano Higes, Sylwia Kasprzak, et al.

► **To cite this version:**

Philippe Blanchard, Frank Schurr, Violaine Olivier, Olivier Celle, Karina Antùnez, et al.. Phylogenetic analysis of the RNA-dependent RNA polymerase (RdRp) and a predicted structural protein (pSP) of the Chronic bee paralysis virus (CBPV) isolated from various geographic regions.. *Virus Research*, 2009, 144 (1-2), pp.334-8. 10.1016/j.virusres.2009.04.025 . hal-00419893

**HAL Id: hal-00419893**

**<https://ances.hal.science/hal-00419893>**

Submitted on 25 Sep 2009

**HAL** is a multi-disciplinary open access archive for the deposit and dissemination of scientific research documents, whether they are published or not. The documents may come from teaching and research institutions in France or abroad, or from public or private research centers.

L'archive ouverte pluridisciplinaire **HAL**, est destinée au dépôt et à la diffusion de documents scientifiques de niveau recherche, publiés ou non, émanant des établissements d'enseignement et de recherche français ou étrangers, des laboratoires publics ou privés.

1 **PHYLOGENETIC ANALYSIS OF THE RNA-DEPENDENT RNA**  
2 **POLYMERASE (RdRp) AND A PREDICTED STRUCTURAL PROTEIN**  
3 **(pSP) OF THE CHRONIC BEE PARALYSIS VIRUS (CBPV) ISOLATED**  
4 **FROM VARIOUS GEOGRAPHIC REGIONS.**

5

6 **Philippe Blanchard<sup>\*1</sup>, Frank Schurr<sup>1</sup>, Violaine Olivier<sup>1</sup>, Olivier Celle<sup>1</sup>,**  
7 **Karina Antùnez<sup>2</sup>, Tamàs Bakonyi<sup>3</sup>, Hélène Berthoud<sup>4</sup>, Eric Haubruge<sup>5</sup>,**  
8 **Mariano Higes<sup>6</sup>, Sylwia Kasprzak<sup>7</sup>, Hemma Koeglberger<sup>8</sup>, Per Kryger<sup>9</sup>,**  
9 **Richard Thiéry<sup>1</sup>, Magali Ribièrè<sup>1</sup>.**

10

11 <sup>1</sup> Agence Française de Sécurité Sanitaire des Aliments (AFSSA), Les Templiers, Route des  
12 Chappes, BP 111, 06902 Sophia Antipolis, France.

13 <sup>2</sup> Laboratorio de Microbiologia, Instituto de Investigaciones Biologicas Clemente Estable,  
14 Avenida Italia 3318, CP 11600 Montevideo, Uruguay.

15 <sup>3</sup> Department of Microbiology and Infectious Diseases, Faculty of Veterinary Science, Szent  
16 István University, H-1143 Budapest, Hungary.

17 <sup>4</sup> Agroscope Liebefeld-Posieux Research Station ALP, Mikrobiologie, Schwarzenburg Strasse  
18 161, CH-3003 Bern, Switzerland.

19 <sup>5</sup> Faculté Universitaire des Sciences Agronomiques, Unité d'Entomologie fonctionnelle et  
20 évolutive, Passage des Déportés, B-5030 Gembloux, Belgium.

21 <sup>6</sup> Centro Apicola Regional, Direccion General de la Produccion Agropecuaria, Consejeria de  
22 Agricultura, Junta de Comunidades de Castilla-La Mancha, 19180 Marchamalo, Spain.

23 <sup>7</sup> National Veterinary Research Institute, Department of Parasitology and Invasive Diseases,  
24 Al. Partyzantow 57, 24-100 Pulawy, Poland.

25 <sup>8</sup> Institut für Bienenkunde, Spargelfeldstrasse 191, 1220 Wien, Austria.

26 <sup>9</sup> University of Aarhus, Faculty of Agricultural Sciences, Department of Integrated Pest  
27 Management, Forsogsvej 1, DK-4200 Slagelse, Denmark.

28

29 \*Corresponding author

30 Mailing address: Blanchard Philippe, AFSSA Sophia-Antipolis, Unité Pathologie de l'Abeille,

31 Les Templiers, BP 111, Fr – 06902 Sophia Antipolis

32 Telephone number: +33.492.948.769

33 Fax number: +33.492.943.701

34 e-mail: [p.blanchard@afssa.fr](mailto:p.blanchard@afssa.fr)

35 **Summary**

36

37 Chronic bee paralysis virus (CBPV) is responsible for chronic paralysis, an infectious and  
38 contagious disease of adult honey bees (*Apis mellifera* L.). The full-length nucleotide  
39 sequences of the two major RNAs of CBPV have previously been characterized. The Orf3 of  
40 RNA1 has shown significant similarities to the RNA-dependent RNA polymerase (RdRp) of  
41 positive single-stranded RNA viruses, whereas the Orf3 of RNA2 encodes a putative  
42 structural protein (pSP). In the present study, honey bees originating from 9 different  
43 countries (Austria, Poland, Hungary, Spain, Belgium, Denmark, Switzerland, Uruguay and  
44 France) were analysed for the presence of CBPV genome. The complete genomic nucleotide  
45 sequence of the RdRp (1947bp) and of the pSP (543bp) from 24 honey bee positive samples  
46 was determined and the phylogenetic relationship among isolates was investigated. Four  
47 distinct genotypes of CBPV were observed.

48

49 Keywords: Chronic bee paralysis virus (CBPV), RNA-dependent RNA polymerase, Predicted  
50 structural protein, Phylogenetic analysis, *Apis mellifera*.

51

52 **Short communication**

53

54 Chronic bee paralysis virus (CBPV) is the aetiological agent of an infectious and contagious  
55 disease of adult honey bees (*Apis mellifera* L.) known as Chronic paralysis (Ball & Bailey,  
56 1997). This pathology is known to induce significant losses in honey bee colonies (Allen &  
57 Ball, 1996), characterized by clusters of trembling, flightless, crawling bees and by individual  
58 black, hairless bees standing at the hive entrance (Bailey et al., 1983; Ball & Bailey, 1997).  
59 Although the complete sequences of the two major genomic RNAs of CBPV have recently  
60 been determined (Olivier et al., 2008), its taxonomic position is currently unassigned (Mayo et  
61 al., 2005). RNA1 (3674 nt) and RNA2 (2305 nt) are positive single-stranded RNAs that are  
62 capped but not polyadenylated. Although CBPV shares several characteristics with viruses of  
63 the *Nodaviridae* and *Tombusviridae* families, CBPV could be considered as the type species  
64 of a new family of positive single-stranded RNA viruses (Olivier et al., 2008).

65 The distribution of CBPV is worldwide (Allen & Ball, 1996; Ribière et al., 2008). The  
66 prevalence of this virus has been investigated in various countries, such as Great Britain  
67 (Bailey et al., 1981), Poland (Topolska et al., 1995), France (Ribière et al., 2000; Tentcheva et  
68 al., 2004), Uruguay (Antunez et al., 2005), Austria (Berenyi et al., 2006), New Zealand (Todd  
69 et al., 2007), Hungary (Forgach et al., 2008), Denmark (Nielsen et al., 2008), Brazil (Teixeira  
70 et al., 2008), Spain (unpublished data) and Belgium (unpublished data).

71 Among the many viruses able to infect honey bees, some have been studied by phylogenetic  
72 analysis, including *Acute bee paralysis virus* (ABPV) (Bakonyi et al., 2002), *Sacbrood virus*  
73 (SBV) (Grabensteiner et al., 2001), *Kashmir bee virus* (KBV) (Hung et al., 2000), *Deformed*  
74 *wing virus* (DWV) (Berenyi et al., 2007) and more recently, *Israeli acute paralysis virus* (IAPV)  
75 (Blanchard et al., 2008b; Palacios et al., 2008). While the phylogenetic analysis of SBV and  
76 ABPV revealed clustering of the strains according to their geographic origins (Bakonyi et al.,  
77 2002; Grabensteiner et al., 2001), the phylogenetic analysis of DWV revealed a monophyletic  
78 cluster, despite the various geographic origins of the isolates (Berenyi et al., 2007). The  
79 preliminary results on the phylogenetic analysis of IAPV also seem to reveal distinct lineages  
80 according to their geographic origins (Blanchard et al., 2008b; Palacios et al., 2008).

81 Up to date, no study on the genetic diversity of CBPV could be carried out, because of the  
82 unavailability of complete nucleotide sequence of CBPV. Recently, we have reported genomic  
83 variability between partial sequences of CBPV from different bee samples that led us to  
84 develop improved molecular diagnostic methods and quantitative assays (Blanchard et al.,  
85 2007, 2008a). By using these assays, 40% of the CBPV isolates that were not detected with  
86 the first CBPV RT-PCR test published by our laboratory (Ribi re et al., 2002) were  
87 successfully detected.

88 The aim of this study was to assess the genetic relationship among CBPV isolates from  
89 various geographic origins. We have chosen to perform the phylogenetic analysis on the Orf3  
90 of CBPV RNA1, reported as the only amino acid sequence sharing significant similarities with  
91 the conserved sequence domains of the RNA-dependent RNA polymerase (RdRp) of single-  
92 stranded RNA viruses (Olivier et al., 2008). Moreover, Baker and Schroeder (2008) have  
93 recently demonstrated the possibility of using the RdRp as a taxonomic marker for the  
94 classification of Picorna-like viruses infecting honey bees. To complete our study, we also  
95 performed a phylogenetic analysis on the Orf3 of CBPV RNA2, coding for a predicted  
96 structural protein (pSP), as suggested by Olivier et al, (2008).

97 Samples of adult worker bees were collected from nine countries (Austria, Belgium, Denmark,  
98 France, Hungary, Poland, Spain, Switzerland, Uruguay). The samples were collected  
99 between 2003 and 2007, from honey bee colonies presenting symptoms of chronic paralysis  
100 or abnormal mortalities, except for the Swiss samples and an Austrian sample, where no  
101 specific symptoms were identified. Samples tested CBPV-positive, either by the AGID test  
102 (Agarose Gel ImmunoDiffusion) (Ribi re et al., 2000), or by the RT-PCR test (Ribi re et al.,  
103 2002) were sent to the bee pathology unit (French Food Safety Agency, Sophia Antipolis,  
104 France) for phylogenetic analysis. A total of 101 bee samples were analysed. Sample  
105 preparation, RNA extraction and cDNA synthesis were performed as described previously  
106 (Blanchard et al., 2007; Ribi re et al., 2002). Bee samples were first analysed using the newly  
107 developed RT-PCR CBPV test (Blanchard et al., 2008a), completed by the recently upgraded  
108 real-time RT-PCR test (Blanchard et al., 2007; Celle et al., 2008). cDNAs of each CBPV  
109 positive sample were subjected to supplementary PCRs, allowing to amplify the entire RdRp  
110 and the predicted structural protein of CBPV. Sixty-four out of the 101 investigated bee

111 samples from the different countries were found CBPV positive with high viral load (over 10<sup>10</sup>  
112 CBPV copies per bee), enabling to amplify the entire RdRp and the pSP.

113 Three different primer pairs were designed by Primer3 Output for the amplification of  
114 overlapping fragments which cover the entire RdRp of CBPV (Table 1), based on the  
115 sequence of CBPV RNA1 (GenBank accession no. **EU122229**) described by Olivier et al.  
116 (2008). Amplifications were carried out in a total reaction volume of 50µl using the Platinum®  
117 *Pfx* DNA Polymerase (Invitrogen). This polymerase has a proofreading 3'-5' exonuclease  
118 activity, and therefore provides higher fidelity. The final PCR reaction contained 2X Platinum®  
119 *Pfx* Amplification Buffer, 1mM of MgSO<sub>4</sub>, 0.3 mM of dNTPs mix PCR grade, 0.3 µM of each  
120 primer, 2.5 U of Platinum® *Pfx* DNA Polymerase and 5 µl of cDNA. The thermal cycling  
121 conditions were 5 min at 94°C (denaturing of the template and activation of the enzyme),  
122 followed by 35 cycles consisting of denaturing at 94°C for 15 s, annealing at 55°C for 30 s  
123 and extension at 68°C for 30 s to 2 min (depending on the primer pair), completed by a final  
124 extension at 68°C for 10 min. The PCR products were then electrophoresed in 1% agarose  
125 gel in TAE buffer, stained with ethidium bromide, and visualised under UV light. The PCR  
126 products were then purified using the Qiaquick PCR purification kit (Qiagen) and sequenced  
127 in both orientations by using primers described above (Millegen, France). The complete  
128 genomic nucleotide sequence of the RdRp of different CBPV isolates (1947bp) was  
129 determined by overlapping the three sequences using the Seqman™ II program of the  
130 DNASTAR software package (Lasergene). A primer pair was designed, covering the entire  
131 Orf3 (543bp), coding for a predicted structural protein (pSP) (Table 1), based on the  
132 sequence of CBPV RNA2 (GenBank accession no. **EU122230**) described by Olivier et al.  
133 (2008). Amplification, PCR product purification, sequencing and nucleotide sequence  
134 determination were carried out as described for the RdRp gene.

135 Preliminary comparison of the sequences from isolates from the same geographical origin  
136 revealed that most frequently they shared near 100% identity. The analysis was thus  
137 restricted to the divergent sequences (5 from France and 17 from different countries, Table  
138 2). The nucleotide sequences of the RdRp and the pSP from the 22 new isolates were  
139 submitted to the GenBank database under accession numbers **FJ345306** to **FJ345349**. The  
140 nucleotide sequence of RdRp and pSP of CBPV reference isolates A and B, were determined

141 respectively from RNA1 (GenBank accession nos. EU122229 and EU122231) and RNA2  
142 sequences (GenBank accession nos. EU122230 and EU122232), described previously by  
143 Olivier et al. (2008). In this study, CBPV reference isolates A and B were respectively named  
144 Fr 1 and Fr 2.

145 Nucleotide sequences of RdRp and predicted structural protein were aligned by using the  
146 MegAlign™ program of the DNASTAR software package (Lasergene) and the CLUSTAL\_X  
147 program (Thompson et al., 1997). The final alignment was checked by visual inspection.  
148 Phylogenetic analysis was performed by using the neighbour-joining (NJ), maximum  
149 likelihood (ML) and maximum parsimony (MP) methods implemented in the PHYLOWIN  
150 program (Galtier et al., 1996), and by using the NJ and MP methods implemented in the  
151 Molecular Evolutionary Genetics Analysis (MEGA) program version 3.1 (Kumar et al., 2004).  
152 All methods gave similar profiles. Results using the MEGA software are shown. Branches  
153 were condensed when bootstrap values were less than 70 %.

154 The analysis of the sequence pair distances using the Clustal W method revealed 0.3-9.6%  
155 divergence between the 24 RdRp nucleotide sequences and 0.2-4.6% divergence between  
156 the 24 RdRp amino acid sequences. The phylogenetic relationship among the 24 CBPV  
157 RdRp sequences was assessed and revealed four main clusters, supported by high bootstrap  
158 values (Figure 1) using NJ, ML and MP methods of analysis. Lineage A contained most of  
159 French isolates (5/7) and the isolates from Spain and Belgium. Lineage B contained a French  
160 isolate, two Swiss isolates and all the Polish, Austrian, Danish and Hungarian isolates.  
161 Lineage C contained two Uruguayan isolates and lineage D contained 3 isolates obtained  
162 from different countries (France, Switzerland and Uruguay). Since isolates from Uruguay,  
163 Switzerland and France were present in several clusters, no clear geographical segregation  
164 was observed. However, lineage A mainly contains isolates from South and Western Europe,  
165 compared to lineage B clustering isolates from North and Eastern Europe, while lineage C  
166 contains isolates from South America. The clustering of a French, a Swiss and an Uruguayan  
167 isolates (Lineage D) remains unexplained and raises the question of the possible role of  
168 commercial exchange of honey bees. However, the presence of French isolates in three of  
169 four major lineages (5 in lineage A, 1 in lineage B and 1 in lineage D) could actually results  
170 from the over representation of isolates from France. Studying more isolates originating from



171 a broader range of countries could help to definitively identify geographical trends. In this  
172 study, no correlation between sequence variation and occurrence of clinical symptoms was  
173 observed. The branching of the phylogenetic tree did not enable the segregation of CBPV  
174 isolates from symptomatic (83%) and asymptomatic bee colonies (17%).

175 The phylogenetic relationship among the 24 CBPV pSP sequences revealed a similar profile  
176 to that obtained with the RdRp sequences (Figure 2), except for an Uruguayan isolate (Ur 3).  
177 The pSP of this isolate clustered in lineage B, compared to the RdRp of this isolate, which  
178 clustered in lineage C. Moreover, lineage C and D were clustered together. While the  
179 alignment of the 24 pSP nucleotide sequence revealed 0-6.6% divergence, the alignment of  
180 the 24 pSP amino acid sequences showed a very low degree of divergence (0-2.3%  
181 corresponding to only 2 amino acids), unexpectedly suggesting a highly conserved protein.  
182 Due to its low variability, pSP sequence seems not to be indicated for phylogenetic study,  
183 while RdRp sequences are more discriminating. Whereas it is very likely that the Orf3 of  
184 CBPV RNA1 encodes the viral RdRp (Olivier et al., 2008), it is necessary to further  
185 characterize the proteins encoded by the different ORFs of the CBPV genome (work in  
186 progress in our laboratory).

187 In conclusion, this study underlines the presence of chronic paralysis outbreaks in several  
188 countries and points to the need to assess the impact of this disease in colony weakness  
189 worldwide. Further investigations on CBPV isolates from a broader origin are necessary to  
190 confirm their geographical distribution, to assess the global distribution of this virus and to  
191 further investigate the CBPV role in disease outbreaks.

192

### 193 **Acknowledgements**

194 This work was supported by the French Ministère de l'Agriculture et de l'Alimentation and with  
195 funds from the "Fonds Européens d'Orientation et de Garantie Agricole" (FEOGA), in  
196 accordance with the French programme for the improvement of the production and  
197 commercialisation of beekeeping products. The authors are grateful to the collaborators and  
198 beekeepers for having kindly provided bee samples. The help of Ms. Cristina Gastaldi in  
199 improving the English of the manuscript is gratefully acknowledged.

200

201 **References**

- 202 Allen, M. & Ball, B. V. 1996. The incidence and world distribution of honey bee viruses. *Bee*  
203 *World* 77, 141-162.
- 204 Antunez, K., D', A. B., Corbella, E. & Zunino, P. 2005. Detection of chronic bee paralysis virus  
205 and acute bee paralysis virus in Uruguayan honeybees. *J. Invertebr. Pathol.* 90, 69-72.
- 206 Bailey, L., Ball, B. V. & Perry, J. N. 1981. The prevalence of viruses of honey bees in Britain.  
207 *Ann. Appl. Biol.* 97, 109-118.
- 208 Bailey, L., Ball, B. V. & Perry, J. N. 1983. Honeybee paralysis: its natural spread and its  
209 diminished incidence in England and Wales. *J. Apic. Res.* 22, 191-195.
- 210 Baker, A. C. & Schroeder, D. C. 2008. The use of RNA-dependent RNA polymerase for the  
211 taxonomic assignment of Picorna-like viruses (order Picornavirales) infecting *Apis mellifera* L.  
212 populations. *Viol. J.* 5, 10.
- 213 Bakonyi, T., Grabensteiner, E., Kolodziejek, J., Rusvai, M., Topolska, G., Ritter, W. &  
214 Nowotny, N. 2002. Phylogenetic analysis of acute bee paralysis virus strains. *Appl. Environ.*  
215 *Microbiol.* 68, 6446-6450.
- 216 Ball, B. V. & Bailey, L. 1997. Viruses. In: Morse, R.A. Flottum, K. (Eds), *Honey Bee Pests,*  
217 *Predators, & Diseases*, third ed A.I. Root Company, Medina, pp. 11-32..
- 218 Berenyi, O., Bakonyi, T., Derakhshifar, I., Koeglberger, H. & Nowotny, N. 2006. Occurrence of  
219 six honeybee viruses in diseased austrian apiaries. *Appl. Environ. Microbiol.* 72, 2414-2420.
- 220 Berenyi, O., Bakonyi, T., Derakhshifar, I., Koeglberger, H., Topolska, G., Ritter, W.,  
221 Pechhacker, H. & Nowotny, N. 2007. Phylogenetic analysis of deformed wing virus genotypes  
222 from diverse geographic origins indicates recent global distribution of the virus. *Appl. Environ.*  
223 *Microbiol.* 73, 3605-3611.
- 224 Blanchard, P., Ribiere, M., Celle, O., Lallemand, P., Schurr, F., Olivier, V., Iscache, A. L. &  
225 Faucon, J. P. 2007. Evaluation of a real-time two-step RT-PCR assay for quantitation of  
226 Chronic bee paralysis virus (CBPV) genome in experimentally-infected bee tissues and in life  
227 stages of a symptomatic colony. *J. Virol. Methods* 141, 7-13.
- 228 Blanchard, P., Olivier, V., Iscache, A. L., Celle, O., Schurr, F., Lallemand, P. & Ribiere, M.  
229 2008a. Improvement of RT-PCR detection of chronic bee paralysis virus (CBPV) required by  
230 the description of genomic variability in French CBPV isolates. *J. Invertebr. Pathol.* 97, 182-  
231 185.
- 232 Blanchard, P., Schurr, F., Celle, O., Cougoule, N., Drajnudel, P., Thiery, R., Faucon, J. P. &  
233 Ribiere, M. 2008b. First detection of Israeli acute paralysis virus (IAPV) in France, a  
234 dicistrovirus affecting honeybees (*Apis mellifera*). *J. Invertebr. Pathol.* 99, 348-350.
- 235 Celle, O., Blanchard, P., Olivier, V., Schurr, F., Cougoule, N., Faucon, J. P. & Ribiere, M.  
236 2008. Detection of Chronic bee paralysis virus (CBPV) genome and its replicative RNA form  
237 in various hosts and possible ways of spread. *Virus Res.* 133, 280-284.
- 238 Forgach, P., Bakonyi, T., Tapaszti, Z., Nowotny, N. & Rusvai, M. 2008. Prevalence of  
239 pathogenic bee viruses in Hungarian apiaries: situation before joining the European Union. *J.*  
240 *Invertebr. Pathol.* 98, 235-238.
- 241 Galtier, N., Gouy, M. & Gautier, C. 1996. SEAVIEW and PHYLO\_WIN: two graphic tools for  
242 sequence alignment and molecular phylogeny. *Comput. Appl. Biosci.* 12, 543-548.

- 243 Grabensteiner, E., Ritter, W., Carter, M. J., Davison, S., Pechhacker, H., Kolodziejek, J.,  
 244 Boecking, O., Derakhshifar, I., Moosbeckhofer, R., Licek, E. & Nowotny, N. 2001. Sacbrood  
 245 virus of the honeybee (*Apis mellifera*): rapid identification and phylogenetic analysis using  
 246 reverse transcription-PCR. *Clin. Diagn. Lab. Immunol.* 8, 93-104.
- 247 Hung, A. C. F., Peng, C. Y. S. & Shimanuki, H. 2000. Nucleotide sequence variations in  
 248 Kashmir bee virus isolated from *Apis mellifera* L. and *Varroa jacobsoni* Oud. *Apidologie* 31, 17-  
 249 23.
- 250 Kumar, S., Tamura, K., Nei, M., 2004. MEGA3: integrated software for Molecular Evolutionary  
 251 Genetics Analysis and sequence alignment. *Brief. Bioinform.* 5, 150-163.
- 252 Mayo, M.A., Christian, P.D., Hillman, B.I., Brunt, A.A., Desselberger, U., 2005. Unassigned  
 253 Viruses. In: Fauquet, C.M., Mayo, M.A., Maniloff, J., Desselberger, U., Ball, L.A. (Eds.), *Virus*  
 254 *Taxonomy. The Eighth Report of the International Committee on Taxonomy of Viruses.*  
 255 Elsevier, San Diego, 1131-1144.
- 256 Nielsen, S. L., Nicolaisen, M. & Kryger, P. 2008. Incidence of acute bee paralysis virus, black  
 257 queen cell virus, chronic bee paralysis virus, deformed wing virus, Kashmir bee virus and  
 258 sacbrood virus in honey bees (*Apis mellifera*) in Denmark. *Apidologie* 39, 310-314.
- 259 Olivier, V., Blanchard, P., Chaouch, S., Lallemand, P., Schurr, F., Celle, O., Dubois, E.,  
 260 Tordo, N., Thiéry, R., Houlgatte, R. & Ribière, M. 2008. Molecular characterisation and  
 261 phylogenetic analysis of Chronic bee paralysis virus, a honey bee virus. *Virus Res.* 132, 59-  
 262 68.
- 263 Palacios, G., Hui, J., Quan, P. L., Kalkstein, A., Honkavuori, K. S., Bussetti, A. V., Conlan, S.,  
 264 Evans, J., Chen, Y. P., Vanengelsdorp, D., Efrat, H., Pettis, J., Cox-Foster, D., Holmes, E. C.,  
 265 Briese, T. & Lipkin, W. I. 2008. Genetic analysis of Israel acute paralysis virus: distinct  
 266 clusters are circulating in the United States. *J. Virol.* 82, 6209-6217.
- 267 Ribière, M., Ball, B. & Aubert, M. 2008. Natural history and geographical distribution of honey  
 268 bee viruses. In: Aubert, M., Ball, B., Fries, I., Moritz, R., Milani, N., Bernardinelli, I. (Eds),  
 269 *Virology and the Honey Bee, European Commission, Bruxelles*, pp. 15-84..
- 270 Ribière, M., Faucon, J. P. & Pépin, M. 2000. Detection of chronic bee paralysis virus infection:  
 271 application to a field survey. *Apidologie* 31, 567-577.
- 272 Ribière, M., Triboulot, C., Mathieu, L., Aurières, C., Faucon, J. P. & Pépin, M. 2002. Molecular  
 273 diagnosis of chronic bee paralysis virus infection. *Apidologie* 33, 339-351.
- 274 Teixeira, E. W., Chen, Y., Message, D., Pettis, J. & Evans, J. D. 2008. Virus infections in  
 275 Brazilian honey bees. *J. Invertebr. Pathol.* 99, 117-119.
- 276 Tentcheva, D., Gauthier, L., Zappulla, N., Dainat, B., Cousserans, F., Colin, M. E., Bergoin,  
 277 M. 2004. Prevalence and seasonal variations of six bee viruses in *Apis mellifera* L. and  
 278 *Varroa destructor* Mite Populations in France. *Appl. Environ. Microbiol.* 70, 7185-7191.
- 279 Thompson, J. D., Gibson, T. J., Plewniak, F., Jeanmougin, F. & Higgins, D. G. 1997. The  
 280 CLUSTAL\_X windows interface: flexible strategies for multiple sequence alignment aided by  
 281 quality analysis tools. *Nucleic Acids Res.* 25, 4876-4882.
- 282 Todd, J. H., de Miranda, J. R. & Ball, B. V. 2007. Incidence and molecular characterization of  
 283 viruses found in dying New Zealand honey bee (*Apis mellifera*) colonies infested with *Varroa*  
 284 *destructor*. *Apidologie* 38, 354-367.
- 285 Topolska, G., Ball, B. V., Allen, M. 1995. Identyfikacja wirusów u pszczół z dwóch  
 286 warszawskich pasiek. *Medycyna Wet.* 51, 145-147
- 287

288 **Captions to figures**

289 Table 1

290 Oligonucleotide primers used for the amplification of the RNA-dependent RNA polymerase  
291 (RdRp, position 1643-3589 on RNA1) and for the amplification of the predicted structural  
292 protein (pSP, position 303-845 on RNA2).

293

294 Table 2

295 Origin of the studied CBPV isolates used for the phylogenetic analysis: isolate reference, year  
296 of sampling, presence of CBPV symptoms, country of origin, identification of sequence and  
297 GenBank accession number.

298

299 Figure 1

300 Phylogenetic tree constructed using the neighbour-joining (NJ) method with Kimura  
301 parameters, included in the MEGA version 3.1 program (Kumar et al., 2004), on the alignment  
302 of the 1947bp of RdRp sequence of 24 CBPV isolates. The number of each node represents  
303 the bootstrap values as the result of 1000 replicates. Branches were condensed when  
304 bootstrap values were less than 70 %.

305

306 Figure 2

307 Phylogenetic tree constructed using the neighbour-joining (NJ) method with Kimura  
308 parameters, included in the MEGA version 3.1 program (Kumar et al., 2004), on the alignment  
309 of the 543bp of predicted structural protein sequence of 24 CBPV isolates. The number of  
310 each node represents the bootstrap values as the result of 1000 replicates. Branches were  
311 condensed when bootstrap values were less than 70 %.

312

313  
314  
315  
316

Table 1.

Target	Primer Name	Sequence (5' – 3')	Position	PCR product size (bp)
CBPV RNA 1 RdRp	CBPV A1	TGAGGCTTGCTTCTGACAAA	1589-1608*	902
	CBPV A2	ACTACTAGAAACTCGTCGCTTCG	2490-2468*	
	CBPV A3	TCAGACACCGAATCTGATTATTG	1921-1933*	1525
	CBPV A4	CCGGAGACAAAGGTCATCAT	3445-3426*	
	CBPV A5	GGCCCATCATGCAGAAGTAT	3264-3283*	404
	CBPV A6	ACCAGTGCCTGACGGACTTA	3667-3646*	
CBPV RNA 2 pSP	CBPV A7	ACTCCCGTCGTTGTGTTCTC	109-128°	895
	CBPV A8	GGCGATTGGTATTTGTTTGG	1003-984°	

317  
318  
319  
320  
321  
322

\* Nucleotide positions refer to the CBPV RNA1 sequence ([EU122229](#)) described by Olivier et al., (2008).  
° Nucleotide positions refer to the CBPV RNA2 sequence ([EU122230](#)) described by Olivier et al., (2008).

323  
324  
325

Table 2

Isolate <sup>1</sup> / Year	Country	Symptoms <sup>2</sup>	Identification	GenBank accession no. CBPV RdRp	GenBank accession no. CBPV pSP <sup>°</sup>
A* / 2004	France	Yes	Fr 1	<a href="#">EU122229</a>	<a href="#">EU122230</a>
B* / 2005	France	Yes	Fr 2	<a href="#">EU122231</a>	<a href="#">EU122232</a>
198 / 2007	France	Yes	Fr 6	<a href="#">FJ345313</a>	<a href="#">FJ345334</a>
596 / 2007	France	Yes	Fr 7	<a href="#">FJ345314</a>	<a href="#">FJ345335</a>
351 / 2007	France	Yes	Fr 8	<a href="#">FJ345315</a>	<a href="#">FJ345336</a>
363 / 2007	France	Yes	Fr 9	<a href="#">FJ345316</a>	<a href="#">FJ345337</a>
274 / 2007	France	Yes	Fr 10	<a href="#">FJ345312</a>	<a href="#">FJ345338</a>
8-C / 2006	Uruguay	Yes	Ur 1	<a href="#">FJ345325</a>	<a href="#">FJ345347</a>
6-M / 2006	Uruguay	Yes	Ur 2	<a href="#">FJ345326</a>	<a href="#">FJ345348</a>
13-F / 2006	Uruguay	Yes	Ur 3	<a href="#">FJ345327</a>	<a href="#">FJ345349</a>
R1-C6 / 2004	Switzerland	No	Sw 1	<a href="#">FJ345322</a>	<a href="#">FJ345344</a>
R2-C102 / 2004	Switzerland	No	Sw 2	<a href="#">FJ345323</a>	<a href="#">FJ345345</a>
R3-C10 / 2004	Switzerland	No	Sw 3	<a href="#">FJ345324</a>	<a href="#">FJ345346</a>
BE 104 / 2003	Austria	Yes	Au 1	<a href="#">FJ345306</a>	<a href="#">FJ345328</a>
BE 78 / 2006	Austria	No	Au 5	<a href="#">FJ345308</a>	<a href="#">FJ345329</a>
AT 34 / 2004	Austria	Yes	Au 19	<a href="#">FJ345307</a>	<a href="#">FJ345330</a>
H4 300 / 2005	Hungary	Yes	Hu 15	<a href="#">FJ345317</a>	<a href="#">FJ345339</a>
1 M / 2006	Poland	Yes	Po 1	<a href="#">FJ345318</a>	<a href="#">FJ345340</a>
3 NZ / 2006	Poland	Yes	Po 3	<a href="#">FJ345319</a>	<a href="#">FJ345341</a>
4 RZ / 2006	Poland	Yes	Po 4	<a href="#">FJ345320</a>	<a href="#">FJ345342</a>
1 W / 2006	Poland	Yes	Po 6	<a href="#">FJ345321</a>	<a href="#">FJ345343</a>
L – 4 / 2007	Denmark	Yes	De 4	<a href="#">FJ345310</a>	<a href="#">FJ345332</a>
B4 V / 2006	Spain	Yes	Sp 1	<a href="#">FJ345311</a>	<a href="#">FJ345333</a>
23 / 2006	Belgium	Yes	Be 23	<a href="#">FJ345309</a>	<a href="#">FJ345331</a>

326  
327  
328  
329  
330  
331

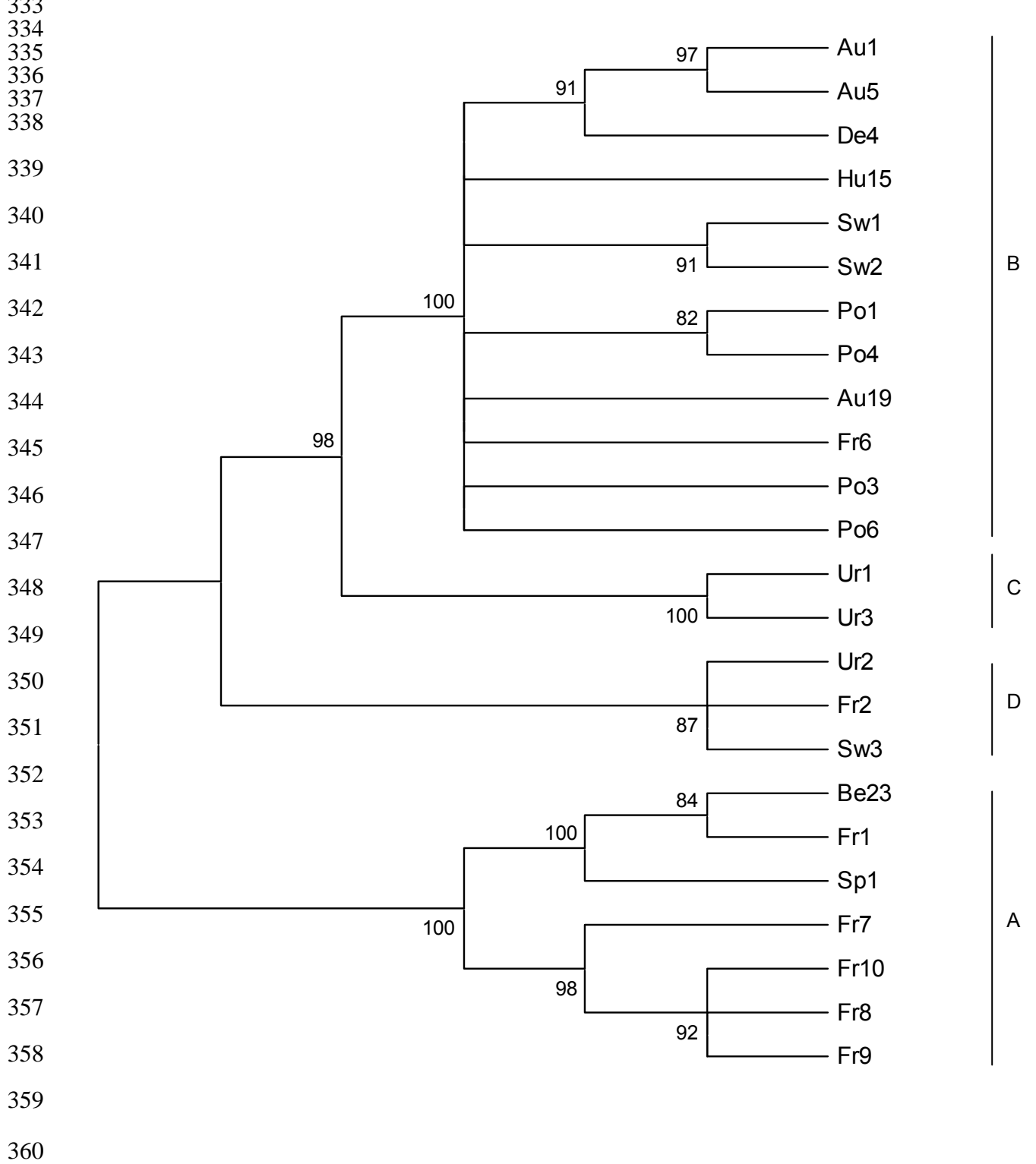
<sup>1</sup> Isolate reference given by our colleagues

<sup>2</sup>: Presence of symptoms like chronic paralysis or abnormal mortalities

\*: CBPV reference isolates A and B (Olivier et al., 2008)

°: pSP, predicted structural protein

332 Figure 1  
333



361 Figure 2  
362

